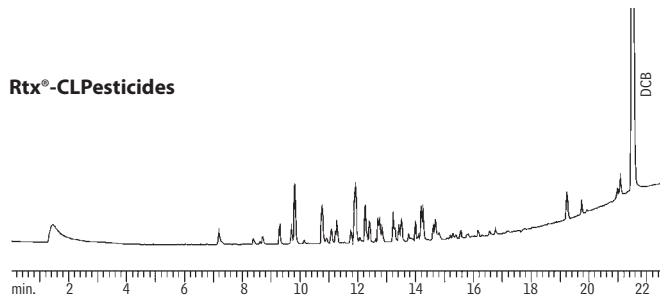


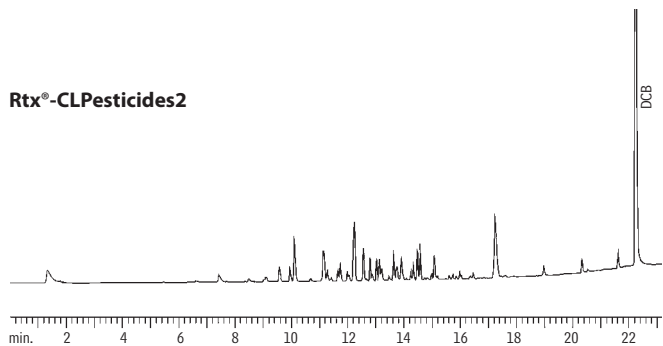
PCBs: Aroclor® 1232
Rtx®-CLPesticides & Rtx®-CLPesticides2

30m, 0.32mm ID, 0.50µm Rtx®-CLPesticides (cat.# 11139).
0.32mm ID, 0.25µm Rtx®-CLPesticides2 (cat.# 11324).
0.5µL direct injection, 160pg on-column concentration.
Oven temp.: 120°C (hold 1 min.) to 300°C @ 9°C/min. (hold 10 min.)
Inj. temp.: 210°C
Det.: ECD with anode purge, 310°C
Carrier gas: helium

Rtx®-CLPesticides



Rtx®-CLPesticides2



GC_EV00450