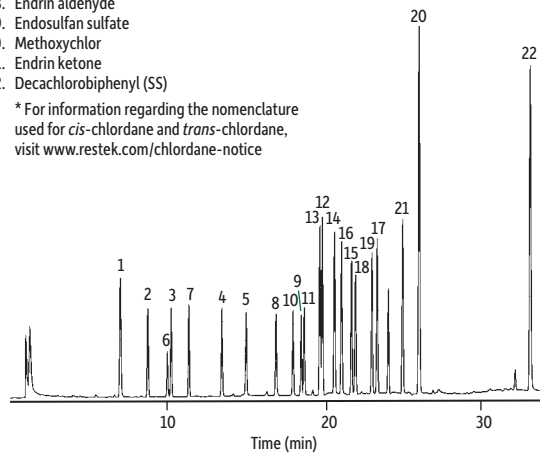


Organochlorine Pesticides by U.S. EPA Method 8081 on Rtx®-5

Peaks

1. 2,4,5,6-Tetrachloro-*m*-xylene (SS)
2. α -BHC
3. γ -BHC
4. Heptachlor
5. Aldrin
6. β -BHC
7. δ -BHC
8. Heptachlor epoxide
9. Endosulfan I
10. *trans*-Chlordane*
11. *cis*-Chlordane*
12. 4,4'-DDE
13. Dieldrin
14. Endrin
15. 4,4'-DDD
16. Endosulfan II
17. 4,4'-DDT
18. Endrin aldehyde
19. Endosulfan sulfate
20. Methoxychlor
21. Endrin ketone
22. Decachlorobiphenyl (SS)

Column Rtx®-5, 30 m, 0.53 mm ID, 0.50 μ m (cat.# 10240)
Sample Organochlorine pesticides
Conc.: 80-800 ng/mL
Injection
Inj. Vol.: 1.0 μ L Direct
Inj. Temp.: 200 °C
Oven
Oven Temp.: 150 °C (hold 5 min) to 275 °C at 4 °C/min (hold 5 min)
Carrier Gas He, constant linear velocity
Linear Velocity: 40 cm/sec @ 150 °C
Detector ECD @ 275 °C
Notes ECD sensitivity: 5.12×10^{-10} AFS



* For information regarding the nomenclature used for *cis*-chlordane and *trans*-chlordane, visit www.restek.com/chlordane-notice

GC_EV00408