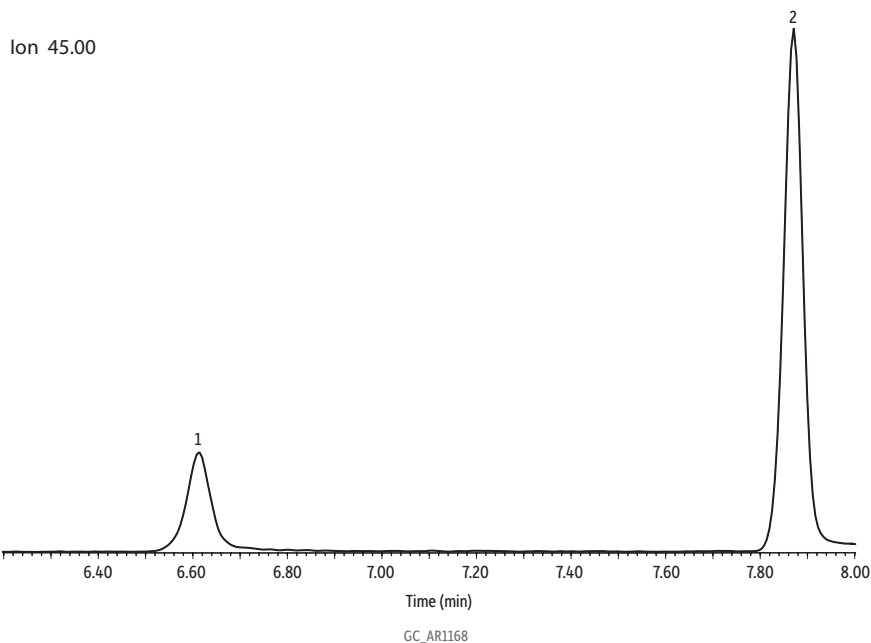


# Ethanol and IPA on Rtx-VMS (60 m, 40 °C start)



Peaks	Retention Time (min)
1. Ethanol	6.61
2. Isopropyl alcohol	7.87

**Column** Rtx-VMS, 60 m, 0.25 mm ID, 1.40 µm (cat.# 19916)  
with MXT low-dead-volume connector kit (cat.# 20536)

**Sample** TO-14A internal standard/tuning mix (cat.# 34408)  
75 comp TO15 + NJ mix (cat.# 34396)

**Diluent:** Air @ 50% RH

**Conc.:** 5 ppbv 250 mL injection

**Injection** on-column

**Oven**

**Oven Temp.:** 40 °C (hold 7 min) to 250 °C at 30 °C/min (hold 2 min)

**Carrier Gas** He, constant flow

**Flow Rate:** 2.0 mL/min

**Detector** MS

**Mode:** Scan

Scan Program:	Group	Start Time (min)	Scan Range (amu)	Scan Rate (scans/sec)
	1	0.00	35.0 - 226.00	3.8

**Transfer Line**

**Temp.:** 250 °C

**Analyzer Type:** Quadrupole

**Source Type:** Extractor

**Extractor Lens:** 6 mm ID

**Source Temp.:** 230 °C

**Quad Temp.:** 150 °C

**Electron Energy:** 70.0 eV

**Tune Type:** BFB

**Ionization Mode:** EI

**Preconcentrator** Markes CIA Advantage

**Instrument** Agilent 7890B GC & 5977A MSD