



PAL Method Composer Methods in Minutes



From Steps...

Steps

- > Control Steps
- > Cleaning Steps
- > Liquid Handling Steps
 - Get Liquid From Vial
 - Dispense Liq. Into Vial
 - Switch Valve
- > Sample Prep Steps
 - Set Temperature
 - Agitate Vial**
 - Vortex Vial
 - Transfer Vial
 - Transport Vial
- > Signal Steps
- > Injection Methods

PAL Method Composer is the new tool to easily develop and test methods directly with the PAL3 System.

It offers users direct access to all the PAL3 System's capabilities. Methods are easily and intuitively created from the steps available by "Drag&Drop". Each method consists of one or several steps performing certain tasks. The sequence of all steps constitutes the method.

Completed methods are imported and directly used in the particular CDS or MS-Data System for running the PAL3 System as part of a LC-MS or GC-MS system.

Currently supported CDS and MS-Data Systems:

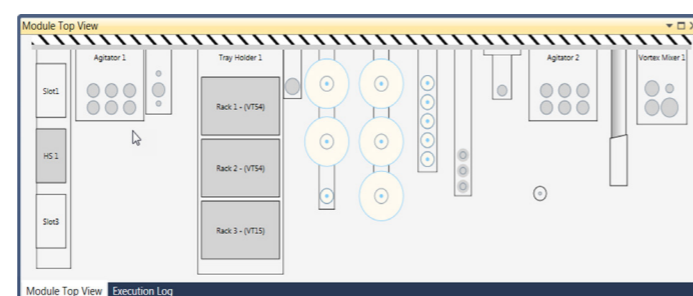
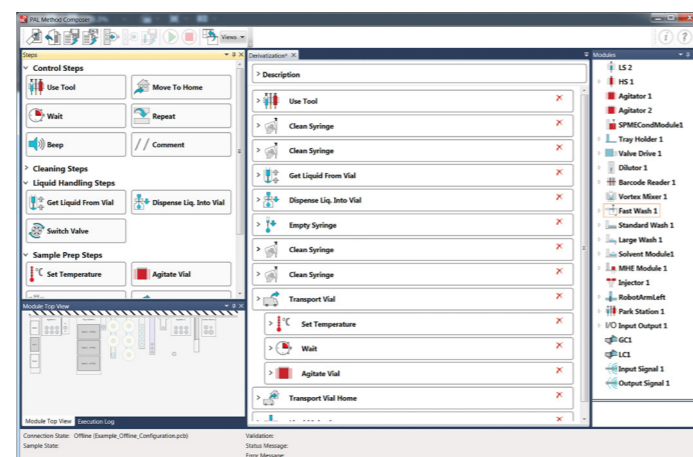
- Analyst
- ChemStation / MassHunter / OpenLAB
- Compass HyStar
- Empower 3
- GCMSsolution / LabSolutions
- XCalibur

The built-in logic allows the method generated to be validated on the fly.

...to Methods within minutes.

Derivatization*

- > Description
- > Use Tool
- > Clean Syringe
- > Clean Syringe
- > Get Liquid From Vial
- > Dispense Liq. Into Vial
- > Empty Syringe
- > Clean Syringe
- > Clean Syringe
- > Transport Vial
- > Set Temperature
- > Wait
- > **Agitate Vial**
- > Agitate Vial
- > Transport Vial Home
- > Liquid Injection



Look and Feel

The graphical user interface shows all necessary information in a clear and well-structured display. The different sections show the available steps, the list of tools and modules, a graphical display of the PAL System's setup, and the method generated. The sections can be rearranged by the user and stored in form of "Views".

The parameters of the steps are default values that were experimentally determined. Pop-up messages give detailed information about steps and their parameters. However, each step can be adjusted for specific methods.

Module top view pane - showing the real configuration

The module top view pane shows active and passive PAL modules as retrieved either from the configuration of a connected PAL or from an offline configuration file. For the PAL RTC the tools stored on the slots of the Park Station are shown. This functionality greatly helps when developing methods.

PAL SYSTEM

Ingenious sample handling



Contact the experts for sample preparation:



Or find your nearest value added reseller:

For more information on the PAL System, including the latest application notes visit:

www.palsystem.com



PAL is a registered trademark of CTC Analytics AG, Switzerland