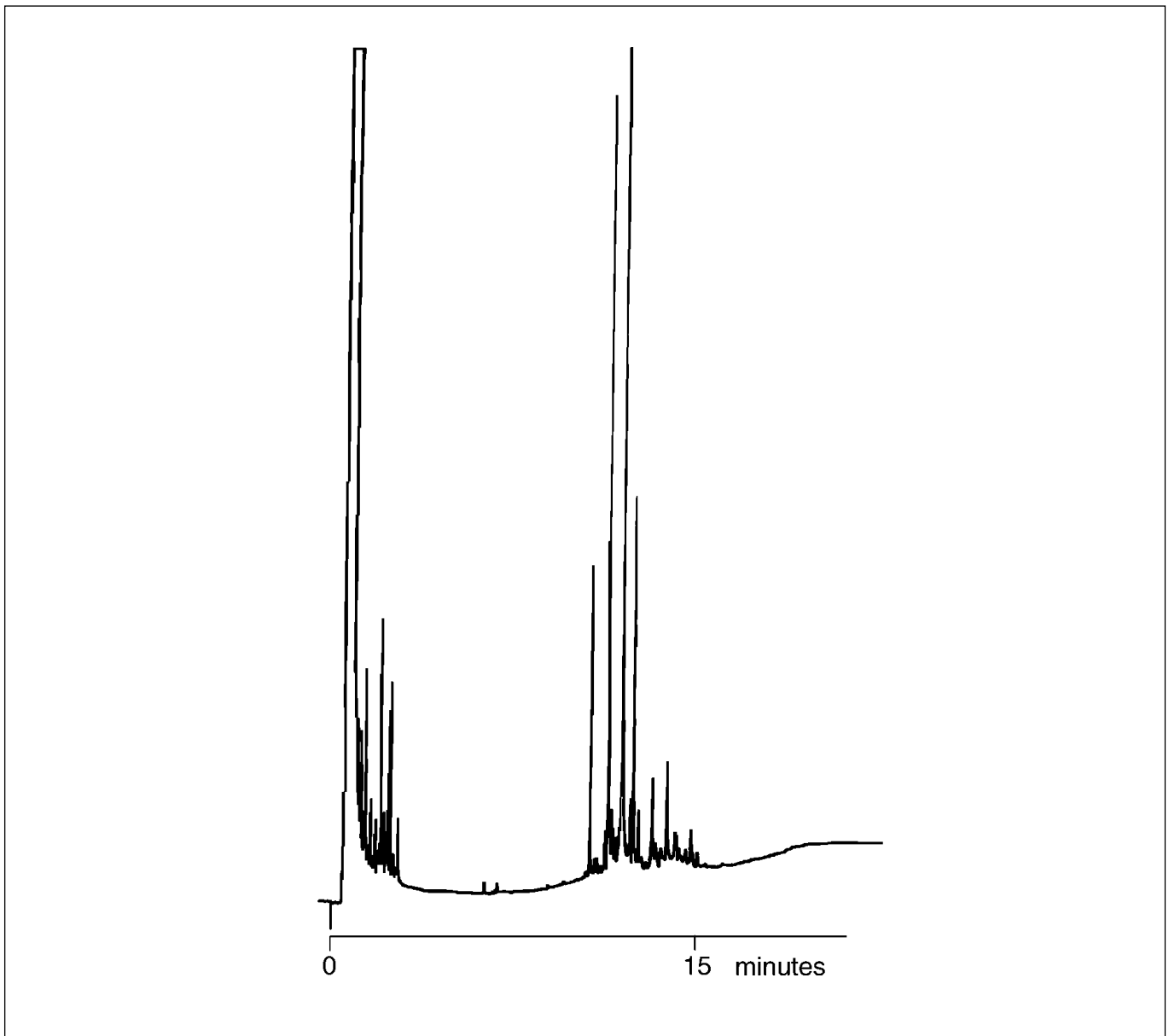


## Analysis of tocopherol isomer mixture

**BPX5**

<b>Column part number</b>	<b>054144</b>		
Phase	BPX5	Final temperature	330°C, 5 min
Column	15 m x 0.32 mm x 0.25 µm	Carrier gas	He, 7 psi
Initial temperature	70°C, 1 min	Detector	FID, 340 °C
Rate 1	25°C/min to 280°C	Injection mode	Cool on-column (OCI-5)
Rate 2	5°C/min to 330°C	Injection volume	0.5 µL



For more information visit [www.trajanscimed.com](http://www.trajanscimed.com) or contact [techsupport@trajanscimed.com](mailto:techsupport@trajanscimed.com)