

Sulfur compounds

Fast analysis of MES in natural gas

Application Note

Energy & Fuels

Authors

Agilent Technologies, Inc.

Introduction

Fast gas chromatography of sulfur compounds in natural gas takes 100 seconds using the MES module PLOT column in the Agilent 490 Micro GC.



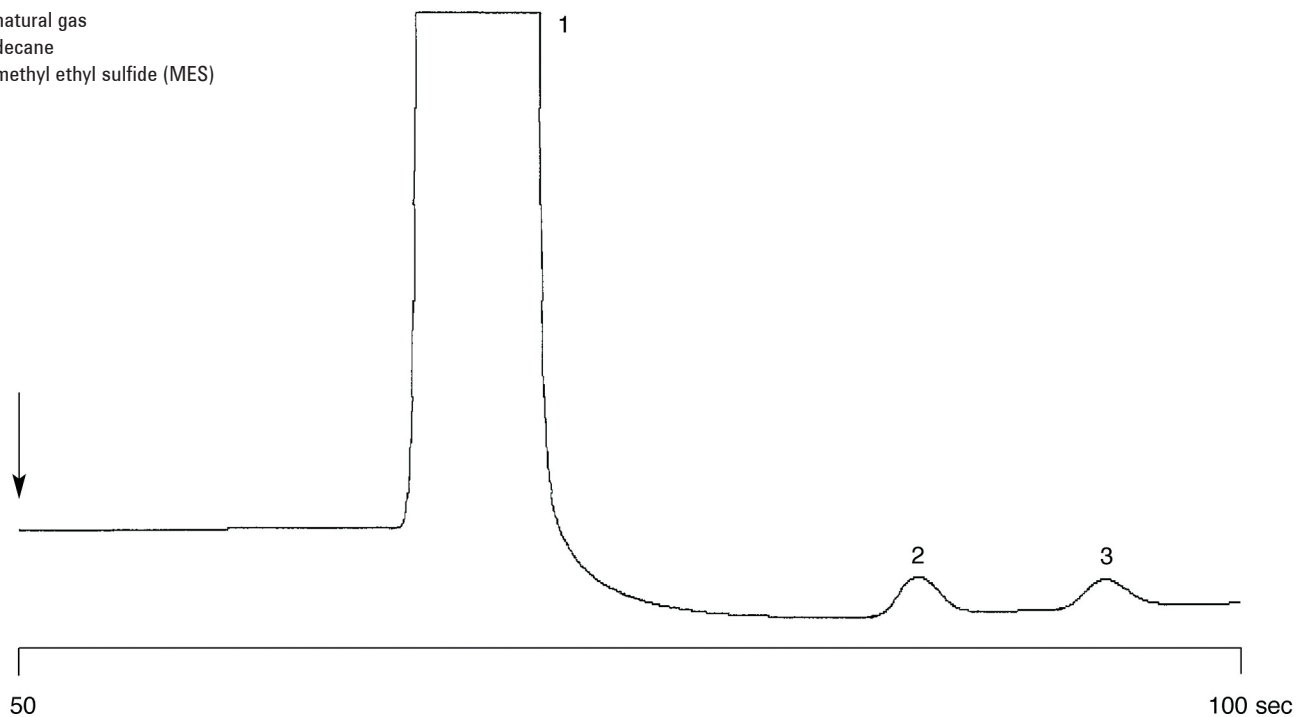
Agilent Technologies

Conditions

Technique : Micro-GC
Column : Agilent MES module PLOT
Part no. CP739783
Temperature : 80 °C
Carrier Gas : He, 150 kPa (1.5 bar, 21 psi)
Pressure program : 70 kPa
Heated injector : yes, 110 °C
Injection time : 255 mSec
Sensitivity : high
Concentration Range : 10 ppm
Matrix : natural gas spiked with 10 ppm C₁₀ and 10 ppm MES

Peak identification

1. natural gas
2. decane
3. methyl ethyl sulfide (MES)



www.agilent.com/chem

This information is subject to change without notice.

© Agilent Technologies, Inc. 2011

Printed in the USA

31 October, 2011

First published prior to 11 May, 2010

A01708



Agilent Technologies