



Gases

Analysis of PH_3 and AsH_3 in C_1 - C_3 hydrocarbons

Application Note

Environmental

Authors

Agilent Technologies, Inc.

Introduction

Gas chromatography using an Agilent PoraPLOT Q column analyzes components in C_1 - C_3 hydrocarbons, including phosphine and arsine, in less than five minutes.



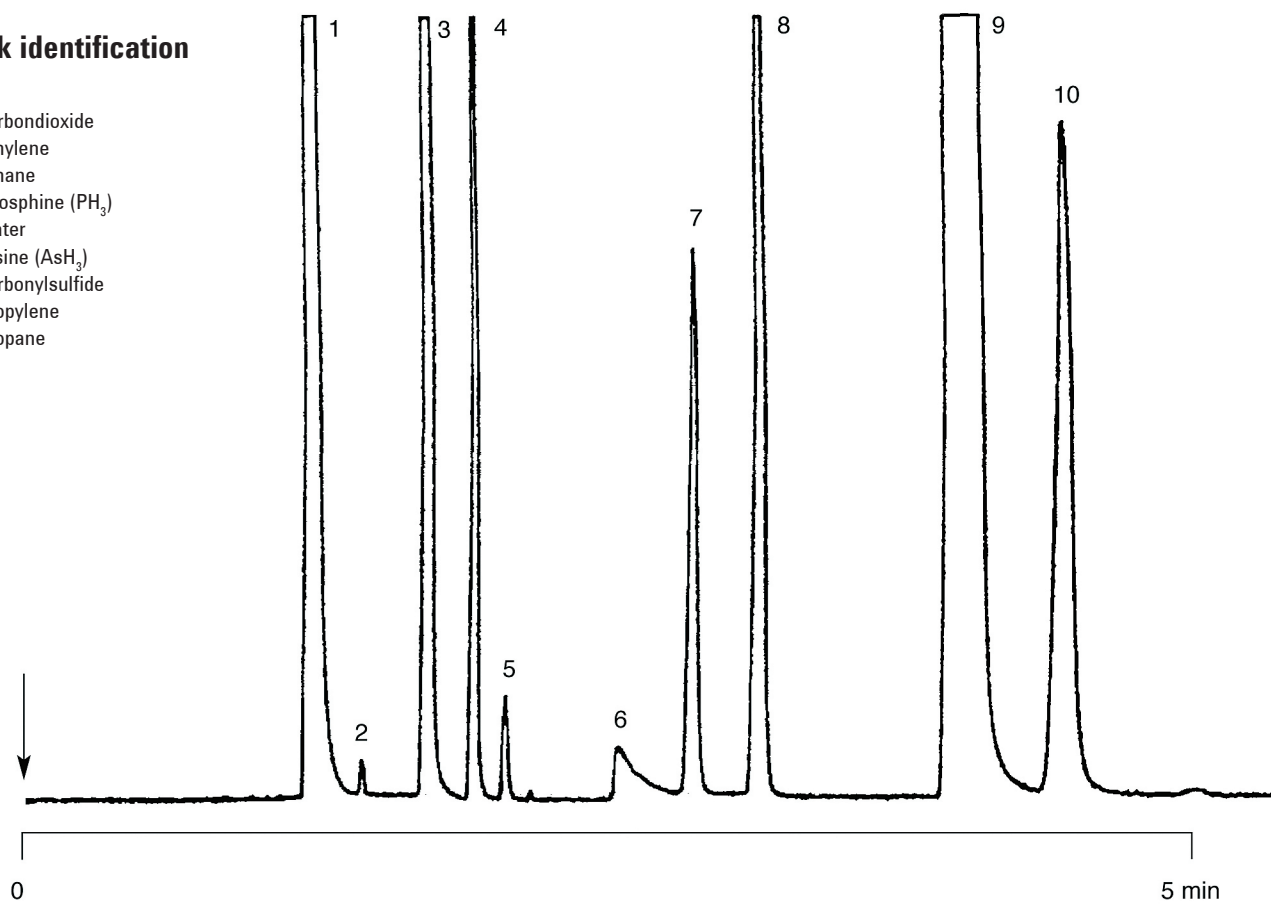
Agilent Technologies

Conditions

Technique : GC-wide-bore
Column : Agilent PoraPLOT Q, 0.53 mm x 25 m fused silica
PLOT (df = 20 μ m) (Part no. CP7554)
Temperature : 80 $^{\circ}$ C
Carrier Gas : He, 25 kPa (0.25 bar, 3.3 psi)
Injector : Split,
T = 150 $^{\circ}$ C
Detector : μ -TCD
T = 110 $^{\circ}$ C
Sample Size : 20 μ L

Peak identification

1. air
2. carbondioxide
3. ethylene
4. ethane
5. phosphine (PH_3)
6. water
7. arsine (AsH_3)
8. carbonylsulfide
9. propylene
10. propane



www.agilent.com/chem

This information is subject to change without notice.

© Agilent Technologies, Inc. 2011

Printed in the USA

31 October, 2011

First published prior to 11 May, 2010

A01639



Agilent Technologies