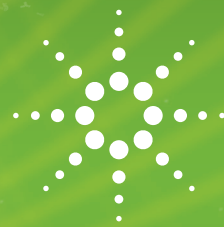


FOOD ANALYSIS

A VALIDATED GC/MS/MS SOLUTION FOR THE ANALYSIS OF PESTICIDES AND OTHER CHEMICALS IN CEREALS



Solutions for Your Analytical Business
Markets and Applications Programs



Agilent Technologies

Authorized Partner Laboratory

Matrices

- Soft wheat
- Hard wheat
- Barley
- Oilseed rape
- Corn
- Soybean
- Peanuts
- Beans
- Sunflower

Target Compounds

- Pesticides

This solution is dedicated to the analysis of more than 210 pesticides in different cereals with one single Triple Quadrupole GC/MS run.

Pesticides and other chemicals are used widely in agriculture.

European Community regulations determine the maximum allowed amounts of those compounds in different matrices for its member states.

Agilent offers a turn-key Solution covering:

- Sample preparation
- Sample analysis
- Data analysis
- Full Agilent support



The working range goes from 0.01 mg/kg to 0.10 mg/kg for all analytes. LOQs, LODs, precision and recoveries are in accordance to DG SANCO guidelines.

Sample preparation is done following QuEChERS approach: extraction with organic solvent followed by dispersive SPE with Bond Elut material. Sample analysis is performed with an Agilent GC 7890 and an Agilent 7000 triple quadrupole. All compounds are determined in a single analytical run.



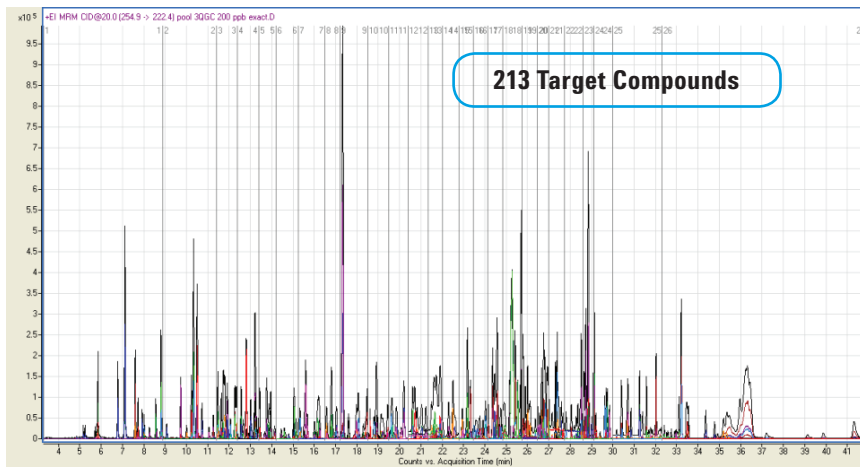
Agilent
Guaranteed
Solution

Developed
Installed
Tested
Supported

The Measure of Confidence

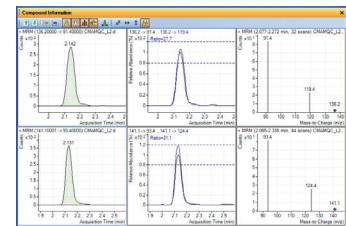
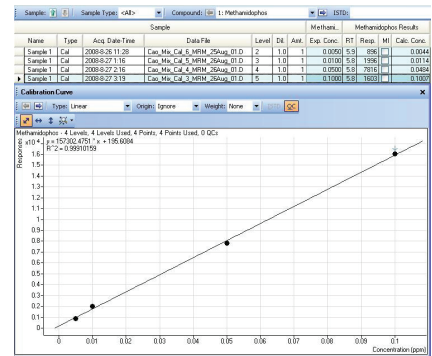


Agilent Technologies



The Agilent Pesticides Solution for cereals comprises the following:

- Complete hardware set-up (Agilent 7000 GC and Agilent 7000 triple quadrupole) with dedicated analytical column;
- Standard operating procedure (SOP) with detailed descriptions of the analysis and validation procedures;
- Method of analysis (a DVD/CD containing sample preparation and sample analysis methods, recommended consumables and materials);
- One week training at Laboratorio Químico-Microbiológico (Murcia, Spain) on sample prep, validation procedures and analytical methods;
- On-site Training and Support (at customer site) covering Qualitative and Quantitative analysis;



STANDARD OPERATING PROCEDURE
 "MULTI-RESIDUE ANALYSIS OF PESTICIDES USING GAS CHROMATOGRAPHY COUPLED TO TRIPLE QUADRUPOLE (GC-QTOF) IN RAPESEED, SOYBEANS, HIGH OLEIC SUNFLOWER SEEDS, LINOLEIC SUNFLOWER SEEDS AND FAVA BEAN SAMPLES"

Rev. 01

SMALL CHANGES CONTROL	
Date	Page

MADE BY: [Name], APPROVED BY: [Name], DATE: 10/10/2011



maps_agilent@agilent.com
www.solutions-to-win.com/

Agilent Products are for Research Use Only.
 Not for use in diagnostic procedures.
 Information, descriptions and specifications in this publication are subject to change without notice.

© Agilent Technologies, Inc. 2014
 Published in USA, April 2014
 5991-3460EN

The Measure of Confidence



Agilent Technologies