

Analyzing Stack Gas Semivolatiles, Using Supelpak-2 Adsorbent and Capillary GC (Modified Method 5, US EPA SW-846)

The demanding detection limits required for air sampling by Modified Method 5 (US EPA SW-846, Method 0010) necessitates extensive cleaning and meticulous handling of the adsorbent cartridge/trap during sampling and analysis. Supelpak-2 adsorbent is cleaned in accordance with and meets the purity criteria of EPA SW-846, Method 0010, for testing semivolatile emissions from incinerator stationary sources.

Key Words:

- air monitoring • stack gases • incinerator emissions
- polynuclear aromatic hydrocarbons • semivolatiles

For decades, Amberlite® XAD®-2 adsorbent, a styrene-divinylbenzene copolymer material, has been used for adsorption of hydrophobic compounds. A dry, high-purity version of this adsorbent, Supelpak™-2 (Figure A), is extensively used for sampling airborne semivolatile compounds, particularly polynuclear aromatic hydrocarbons (PAHs). Source testing, as well as ambient and indoor air monitoring, can be performed with Supelpak-2 material. Physical characteristics and several applications for Supelpak-2 adsorbent are presented in Table 1. The demanding detection limits of these air sampling methods necessitate extensive cleaning and meticulous handling of the adsorbent cartridge/trap during sampling and analysis.

Modified Method 5 (US EPA SW-846, Method 0010)

Supelpak-2 adsorbent is cleaned in accordance with, and meets the purity criteria of, US Environmental Protection Agency SW-846, Method 0010, for testing semivolatile emissions from incinerator stationary sources. Supelpak-2 is packed into glass cartridges/traps. Gaseous and particulate pollutants are collected by pumping air through the sampling train at high flow rates (>20 liters/min). After the sample is collected, the cartridge is extracted with methylene chloride, the extract is concentrated, and the sample is analyzed by GC/FID, GC/MS, or HPLC/UV.

Method 0010, Appendix B calls for a blank adsorbent cartridge to contain no more than 10µg total semivolatiles per gram of adsorbent, and recommends the background be less than 4µg per gram. High purity Supelpak-2 adsorbent well exceeds these requirements. Figure B shows the total chromatographable organic (TCO) analysis for Supelpak-2 adsorbent, under GC conditions selected to encompass the elution range of PAHs. To monitor extraction efficiency a surrogate, such as 2-fluorobiphenyl, is spiked into the cartridge prior to extraction. Figure B also shows the TCO analysis of another “clean” XAD-2

material. Clearly, Supelpak-2 is the cleaner material. Figure C shows the analysis of a reference standard containing heptane and perylene-d₁₂ in addition to the surrogate. Although not part of the EPA method, the reference standard is used for quantification and as retention markers.

Supelpak-2 consistently exhibits extremely low background, well below the levels required in US EPA methods. This adsorbent allows immediate, reproducible, reliable use for airborne semivolatiles analysis. As leaders in resin cleaning technology, we

Table 1. Physical Characteristics and Uses for Supelpak-2 Adsorbent

Matrix:	polyaromatic
Mesh Size:	20-60
Surface Area:	300m ² /g
Mean Pore Diameter:	90Å

Applications

- US EPA SW-846, 0010 (Modified Method 5 Sampling Train)
- US EPA SW-846, 0020 (Source Assessment Sampling System)
- TO13 (PAHs in ambient air)
- IP-7 (PAHs in indoor air)

Figure A. Trap Containing Supelpak-2 Adsorbent

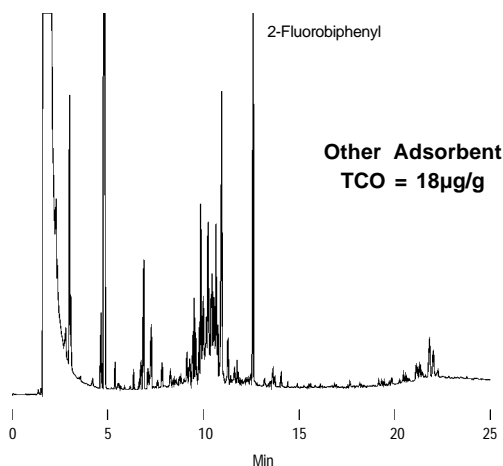
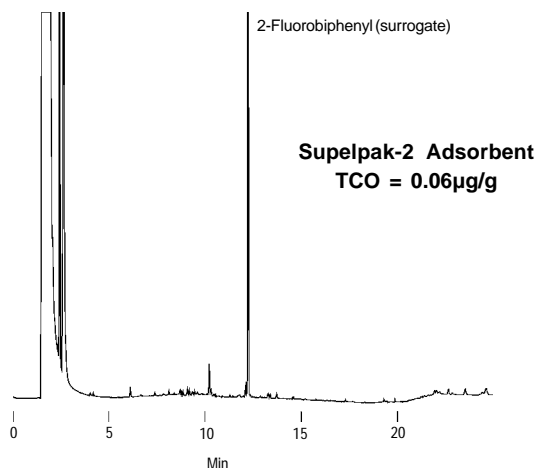


995-0259

also are able and willing to fulfill your custom-adsorbent and custom purification needs – simply contact our highly qualified Technical Service chemists with your questions.

Figure B. Negligible Background in Supelpak-2 Adsorbent

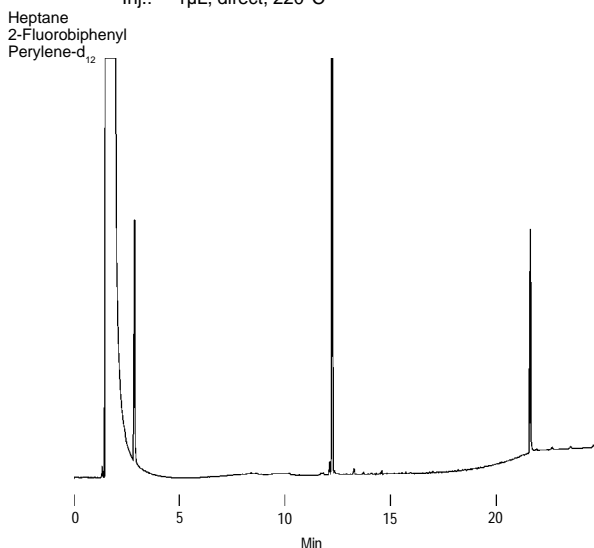
Column: **SPB™-5, 30m x 0.53mm ID, 0.50µm film**
 Cat. No.: **25317**
 Oven: 40°C (4 min) to 300°C at 15°C/min, hold 4 min
 Carrier: helium, 6cc/min (nitrogen make-up gas, 40cc/min)
 Det.: FID, 320°C
 Inj.: 1µL, direct, 220°C



795-0633, 0634

Figure C. Reference Standard

Column: **SPB-5, 30m x 0.53mm ID, 0.50µm film**
 Cat. No.: **25317**
 Oven: 40°C (4 min) to 300°C at 15°C/min, hold 4 min
 Carrier: helium, 6cc/min (nitrogen make-up gas, 40cc/min)
 Det.: FID, 320°C
 Inj.: 1µL, direct, 220°C



795-0635

Ordering Information:

Supelpak-2 Adsorbent

100g **20279**

Capillary GC Column

SPB-5, 30m x 0.53mm ID, 0.50µm film **25317**

Trademarks

SPB, Supelpak – Sigma-Aldrich Co.
 Amberlite, XAD – Rohm and Haas Company

Contact our Technical Service Department
 (phone 800-359-3041 or 814-359-3041, Fax 800-359-3044 or
 814-359-5468) for expert answers to your questions.

Note 86

For more information, or current prices, contact your nearest Supelco subsidiary listed below. To obtain further contact information, visit our website (www.sigma-aldrich.com), see the Supelco catalog, or contact Supelco, Bellefonte, PA 16823-0048 USA.

ARGENTINA · Sigma-Aldrich de Argentina, S.A. · Buenos Aires 1119 AUSTRALIA · Sigma-Aldrich Pty. Ltd. · Castle Hill NSW 2154 AUSTRIA · Sigma-Aldrich Handels GmbH · A-1110 Wien
 BELGIUM · Sigma-Aldrich N.V./S.A. · B-2880 Bornem BRAZIL · Sigma-Aldrich Quimica Brasil Ltda. · 01239-010 São Paulo, SP CANADA · Sigma-Aldrich Canada, Ltd. · 2149 Winston Park Dr., Oakville, ON L6H 6J8
 CZECH REPUBLIC · Sigma-Aldrich s.r.o. · 186 00 Praha 8 DENMARK · Sigma-Aldrich Denmark A/S · DK-2665 Vallensbaek Strand FINLAND · Sigma-Aldrich Finland/YA-Kemia Oy · FIN-00700 Helsinki
 FRANCE · Sigma-Aldrich Chimie · 38297 Saint-Quentin-Fallavier Cedex GERMANY · Sigma-Aldrich Chemie GmbH · D-82041 Deisenhofen GREECE · Sigma-Aldrich (o.m.) Ltd. · Ilioupoli 16346, Athens
 HUNGARY · Sigma-Aldrich Kft. · H-1067 Budapest INDIA · Sigma-Aldrich Co. · Bangalore 560 048 IRELAND · Sigma-Aldrich Ireland Ltd. · Dublin 24 ISRAEL · Sigma Israel Chemicals Ltd. · Rehovot 76100
 ITALY · Sigma-Aldrich s.r.l. · 20151 Milano JAPAN · Sigma-Aldrich Japan K.K. · Chuo-ku, Tokyo 103 KOREA · Sigma-Aldrich Korea · Seoul MALAYSIA · Sigma-Aldrich (M) Sdn. Bhd. · Selangor
 MEXICO · Sigma-Aldrich Química S.A. de C.V. · 50200 Toluca NETHERLANDS · Sigma-Aldrich Chemie BV · 3330 AA Zwijndrecht NORWAY · Sigma-Aldrich Norway · Torshov · N-0401 Oslo
 POLAND · Sigma-Aldrich Sp. z o.o. · 61-663 Poznań PORTUGAL · Sigma-Aldrich Quimica, S.A. · Sintra 2710 RUSSIA · Sigma-Aldrich Russia · Moscow 103062 SINGAPORE · Sigma-Aldrich Pte. Ltd.
 SOUTH AFRICA · Sigma-Aldrich (pty) Ltd. · Jet Park 1459 SPAIN · Sigma-Aldrich Quimica, S.A. · 28100 Alcobendas, Madrid SWEDEN · Sigma-Aldrich Sweden AB · 135 70 Stockholm
 SWITZERLAND · Supelco · CH-9471 Buchs UNITED KINGDOM · Sigma-Aldrich Company Ltd. · Poole, Dorset BH12 4QH
 UNITED STATES · Supelco · Supelco Park · Bellefonte, PA 16823-0048 · Phone 800-247-6628 or 814-359-3441 · Fax 800-447-3044 or 814-359-3044 · email: supelco@sial.com

H

Supelco is a member of the Sigma-Aldrich family. Supelco products are sold through Sigma-Aldrich, Inc. Sigma-Aldrich warrants that its products conform to the information contained in this and other Sigma-Aldrich publications. Purchaser must determine the suitability of the product for a particular use. Additional terms and conditions may apply. Please see the reverse side of the invoice or packing slip.

ART