

3. Maintenance

3.1 Electronic indicator

If your trap came bundled with an electronic indicator please follow the instructions in the electronic indicator user guide on how to install and configure this indicator device.

Visit www.phenomenex.com/GasManagement for more information.

3.2 Replacement of a trap

A trap needs to be exchanged when the visual indicators - when applicable - start changing color, or when the electronic indicator displays a percentage of 10% or less.

3.3 Click-on connector

Regularly check both the big and small O-rings on the Click-On connectors for hair cracks. The slightest leak may allow moisture, oxygen and hydrocarbons to enter the system and contaminate the gas.

4. Disposal



Saturated traps should not be placed in household waste bins. Please check local regulations for information about the disposal of chemical waste in your area.

Never re-condition any filter cartridge: for recycling, please contact your local supplier.

5. Overview

Zebron™ Big Traps are suited for the purification of non-corrosive gases with low contamination concentrations to a better as 6.0 grade (99.99990%) purity.

Zebron™ Big Traps are connected to an appropriate genuine Click-On Connector which is installed into the gas line.

6. Technical Specifications

Trap Type	Capacity	Outlet Concentration (1-20 L/min flow)
Oxygen	2.5 liter oxygen	< 50 ppb
Moisture	105 gram moisture	< 0.1 ppm
Hydrocarbon	180 gram organic compounds (depending on impurities)	< 0.1 ppm
Universal	2 liter oxygen 70 gram moisture 120 g organic compounds (depending on impurities)	Oxygen < 50 ppb Moisture < 0.1 ppm Organics < 0.1 ppm
Carbondioxide	225 gram carbon dioxide	< 0.1 ppm

All traps are packed under Argon, except for the special Helium and Hydrogen specific traps.

Maximum Inlet Pressure: 11 bar

Maximum Flow: 25 L/min.

Gas Quality at Outlet: > 6.0

7. Safety Information

- The maximum concentration of Oxygen allowed in the gas is 0.5%. (valid only for each trap packed with O₂-adsorbent)
- Maximum Gas-System pressure should never exceed 11 Bar (160 psi).
- Do not install a Big Trap near or in a hot area (i.e. the hot-air exhaust at the rear of the GC).

8. Ordering Information

Zebron™ Gas Click-On Connectors

AG6-3160 Zebron Gas Management - 1/8" Brass Click-On Connector Set, 2/pk

AG6-3170 Zebron Gas Management - 1/4" Brass Click-On Connector Set, 2/pk

Zebron™ Gas Management Replacement Traps

AG6-3110 Zebron Gas Management - Trap, Oxygen, 1/pk

AG6-3120 Zebron Gas Management - Trap, Moisture, 1/pk

AG6-3130 Zebron Gas Management - Trap, Hydrocarbon, 1/pk

AG6-3140 Zebron Gas Management - Trap Universal, 1/pk

AG6-3150 Zebron Gas Management - Trap, Carbon Dioxide, 1/pk

Zebron™ Gas Management Accessoires

AG6-3180 Zebron Gas Management Wall-mounting Clamp Set, 2/pk

AG6-3190 O-ring Replacement Set for Gas Trap, 10/pk

AG6-4110 Zebron Gas Management Electronic Indicator for Gas Trap, 1/pk

Reorder at www.phenomenex.com/GasManagement

Compliance



Terms and Conditions

Patent Pending: PCT/NL2012/050477

Subject to Phenomenex Standard Terms and Conditions, which may be viewed at www.phenomenex.com/TermsAndConditions.

Trademarks
Zebron is a trademark of Phenomenex.

FOR RESEARCH USE ONLY. Not for use in clinical diagnostic procedures.
© 2019 Phenomenex, Inc. All rights reserved.

IL67760419_W_2

Zebron™
Gas Management

Click-On Big Trap User Guide

**REPLACE.
REORDER.
RELAX.**

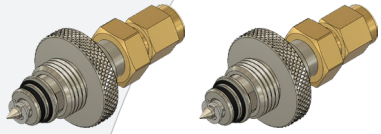


www.phenomenex.com

phenomenex®
...breaking with tradition™

1. Installation of the Click-On Connectors

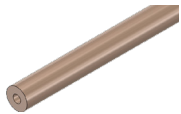
Re-usable Click-On Connectors are available for 1/8" and 1/4" outer tubing sizes and both sizes are available in stainless steel or brass.



1.1 Important information before you start

- Never install brass connectors on stainless steel tubing to avoid leakage.
- Installation of the connector should always be done by trained personnel.
- After installation do not forget to perform a reliable leak test using an electronic leak detector.
- Only use genuine click-on connector parts.

1. Switch off the incoming gas
2. Disconnect the gas line from the analytical instrument

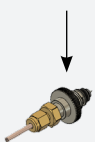


Cut the gas line using an appropriate metal tubing cutter.

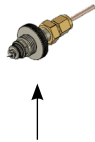
3. Plumb the Click-On connectors into each end of the gas line.

When there is no trap connected, the Click-On Connector will automatically block the gas stream.

Inlet Connector



Outlet Connector



4. Turn the carrier gas on and flush the gas line with pure carrier gas, advised pressure: 90 psi.

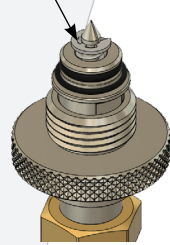
2. Installation of a Big Trap

2.1 Important information before you start

- Never install an Oxygen Big Trap in a gas line for air. It will result in instant saturation!
- Make sure that the temperature of the replacement trap is more or less identical to the temperature of the (already installed) Click-On Connectors on your gas line to avoid any leakage in connections. If temperature is not identical, use at least one hour stabilization time in the same room as the connectors.

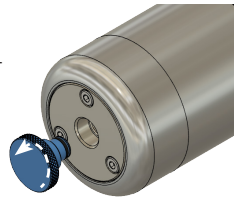
2.2 Install the inlet side of the trap

Push here

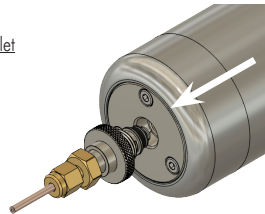


For new installation:
Flush the inlet connector by pushing down the needle valve. Please note: sharp edges!

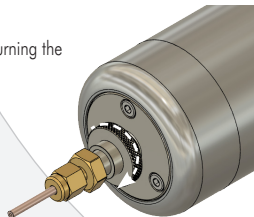
Remove the blue closing plug from the inlet of the trap by turning the plug counter clockwise.



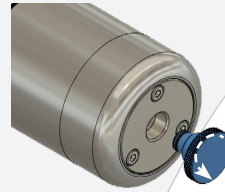
Position the trap into the inlet connector.



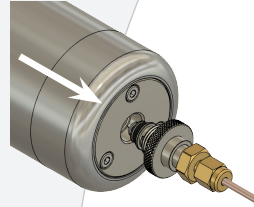
Tighten the connector by turning the knurled ring clockwise.



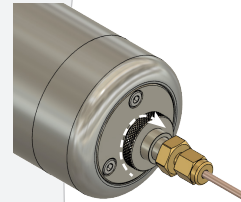
2.4 Install the outlet side of the trap



Remove the blue closing plug from the outlet of the trap by turning the plug counter clockwise.



Position the trap into the outlet connector.

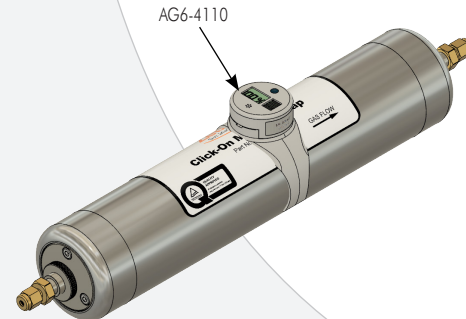


Tighten the connector by turning the knurled ring clockwise.

For new installation: Flush the trap / whole system for 15 min. with pure carrier gas, advised pressure: 90 psi and then mount the outgoing carrier gas line back to the analytical system.

After installation do not forget to perform a reliable leak test using an electronic leak detector.

2.5 Install the electronic indicator



2.6 Recommended mounting position

Gas traps should be mounted in a vertical position to ensure proper contact of the gas with the adsorbent.

