

Application Report 21

Alditol Acetates on Equity-1701

To be analyzed by GC, sugar carbohydrates must be reduced and acylated to volatile alditol acetates. In this application, 8 common sugar carbohydrates were analyzed as their alditol acetate derivatives. The Equity-1701 column was able to resolve all 8, including glucitol and galactitol.

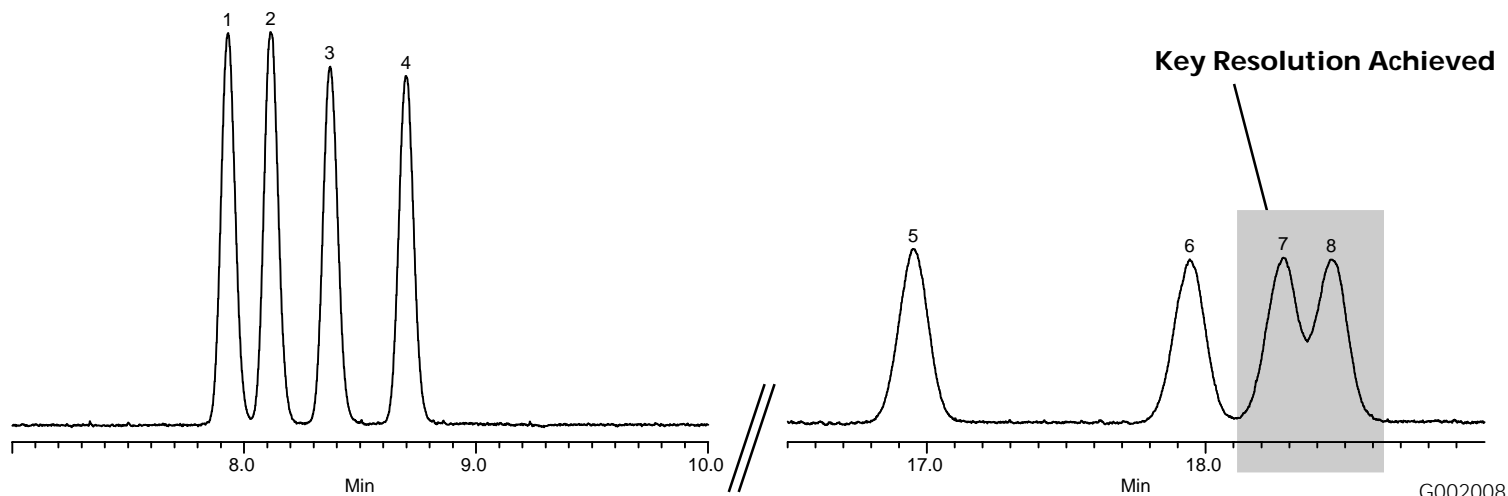
Key Words

sugar carbohydrates, alditol acetates, 28372-U, 47880-U, 47881, Equity

Author: K. Stenerson

Raw Data File Name:
C:\HPCHEM\DATA\1\FROT0218.D
(HPCS44)

Acquisition System: GC 6248



Conditions

Column: Equity-1701, 30m x 0.25mm ID, 0.25 μ m
Cat. No.: 28372-U
Oven: 220°C isothermal
Inj: 220°C
Det.: FID, 260°C
Flow: 20cm/sec @ 220°C
Injection: 1 μ L, 25:1 split
Liner: split cup design
Sample: Alditol acetate mixes @ 500ppm in methylene chloride
(Cat. Nos. 47880-U & 47881)

Peak IDs

1. Rhamnitol
2. Fucitol
3. Ribitol
4. Arabinitol
5. Inositol
6. Mannitol
7. Glucitol
8. Galactitol