

CoreFocus
Report
No.494

GCMS

MS

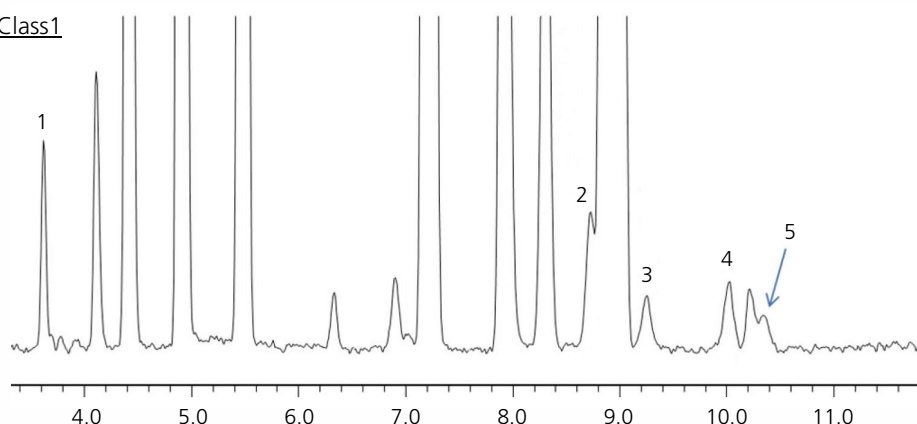
SH Series

SH-I-624Sil MS

Analysis of residual solvent

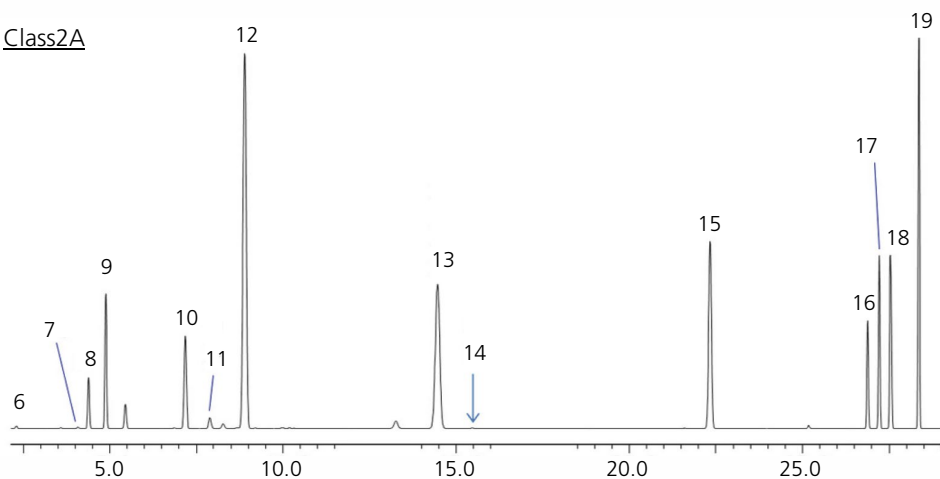
Keywords: Simultaneous analysis, Class1, Class2A, Class2B, Head Space GC/MS

Class1



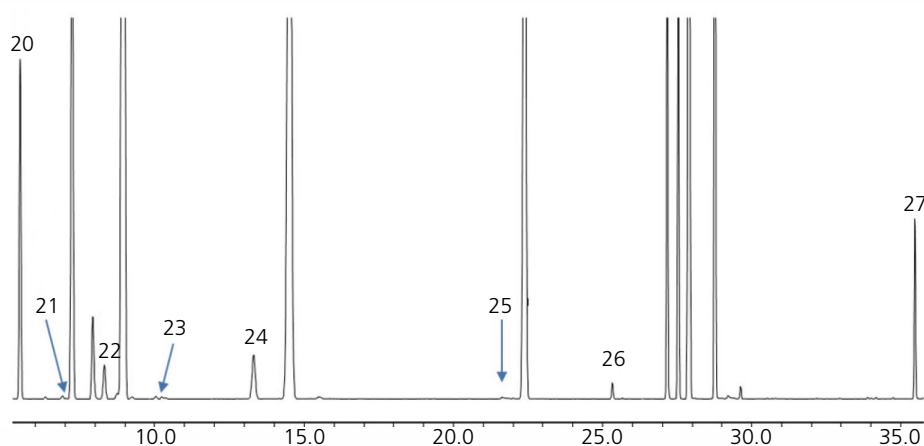
1. 1,1-Dichloroethene
2. 1,1,1-Trichloroethane
3. Carbon Tetrachloride
4. Benzene
5. 1,2-Dichloroethane

Class2A



6. Methanol
7. Acetonitrile
8. Methylene chloride
9. *trans*-1,2-Dichloroethene
10. *cis*-1,2-Dichloroethene
11. Tetrahydrofuran
12. Cyclohexane
13. Methylcyclohexane
14. 1,4-Dioxane
15. Toluene
16. Chlorobenzene
17. Ethylbenzene
18. *m,p*-Xylene
19. *o*-Xylene

Class2B



20. n-Hexane
21. Nitromethane
22. Chloroform
23. 1,2-Dimethoxyethane
24. Trichloroethene
25. Pyridine
26. 2-Hexanone
27. Tetralin

Headspace sampler	: HS-20
GC/MS	: GCMS-QP2010 Ultra
Column	: SH-I-624Sil MS 30 m x 0.25 mmI.D., df = 1.40 µm (P/N: 221-75962-30)

[Headspace]

Mode	: Loop (Volume : 1 µL)
Oven Temperature	: 80 °C
Sample Line Temp.	: 150 °C
Transfer Line Temp.	: 150 °C
Gas Pressure for Vial	: 100 kPa
Vial Equilibrating Time	: 60 min
Vial Pressurizing Time	: 2.0 min
Pressure Equilib. Time	: 0.1 min
Load Time	: 0.1 min
Load Equilibrating Time	: 0.1 min
Injection Time	: 0.5 min
Needle Flash Time	: 5.0 min

[GC]

Injection Mode	: Split
Split Ratio	: 1 : 30
Control Mode	: Constant Linear Velocity (35 cm/sec)
Oven Temperature	: 40 °C (20 min) → 10 °C/min → 240 °C (20 min)

[MS]

Ion Source Temperature	: 200 °C
Interface Temperature	: 250 °C
SCAN Range	: m/z 29 - 200

CoreFocus is a trademark of Shimadzu Corporation or its affiliated companies in Japan and/or other countries

Shimadzu Corporation

www.shimadzu.com/an/

For Research Use Only. Not for use in diagnostic procedures.

This publication may contain references to products that are not available in your country. Please contact us to check the availability of these products in your country.

The content of this publication shall not be reproduced, altered or sold for any commercial purpose without the written approval of Shimadzu.

Company names, products/service names and logos used in this publication are trademarks and trade names of Shimadzu Corporation, its subsidiaries or its affiliates, whether or not they are used with trademark symbol "TM" or "®".

Third-party trademarks and trade names may be used in this publication to refer to either the entities or their products/services, whether or not they are used with trademark symbol "TM" or "®".

Shimadzu disclaims any proprietary interest in trademarks and trade names other than its own.

The information contained herein is provided to you "as is" without warranty of any kind including without limitation warranties as to its accuracy or completeness. Shimadzu does not assume any responsibility or liability for any damage, whether direct or indirect, relating to the use of this publication. This publication is based upon the information available to Shimadzu on or before the date of publication, and subject to change without notice.