

CoreFocus
Report

No.476

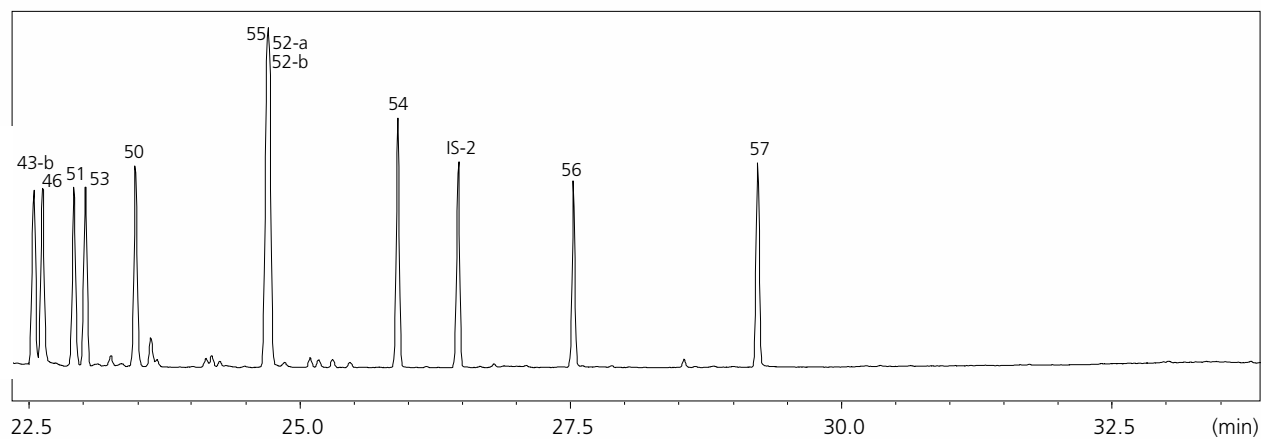
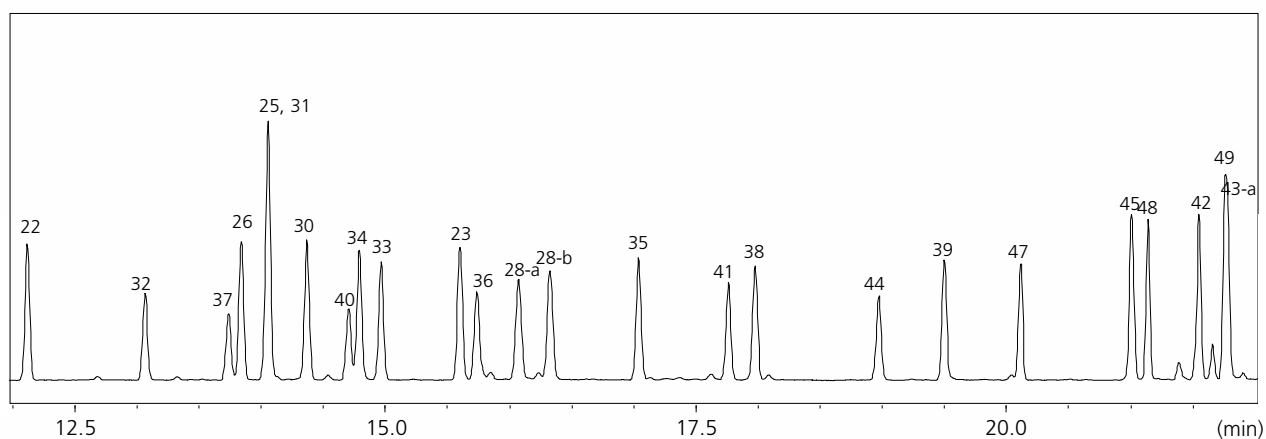
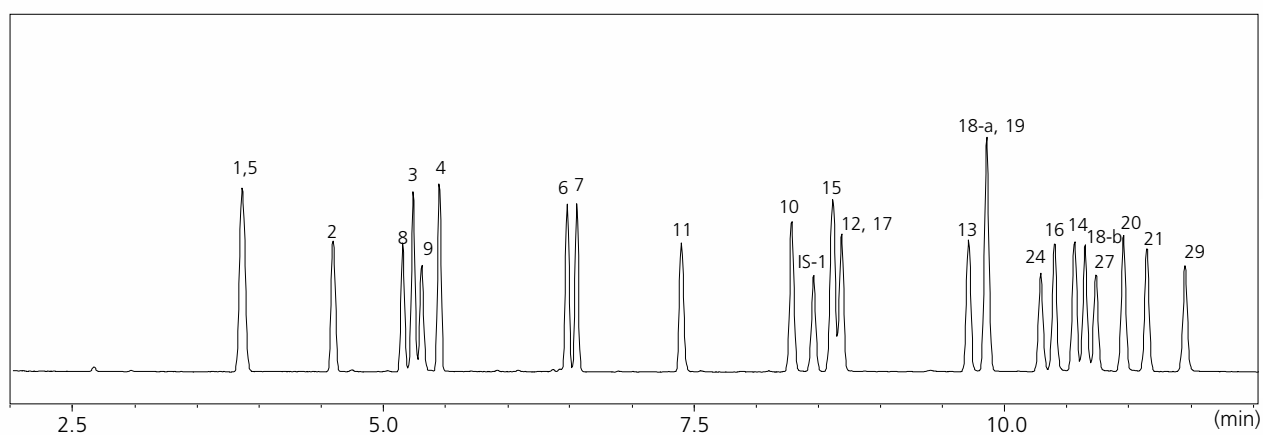
GC-MS

SH Series

SH-1

Analysis of Fragrance Allergens

Keywords: EC 1223/2009, G/TBT/N/EU/ 924, IFRA



ID	Compounds	ID	Compounds
1	α -Pinene	31	β -Damascenone
2	β -Pinene	32	Eugenol
3	α -Terpinene	33	β -Damascone (E)
4	Limonene	34	Trimethyl-benzenepropanol
5	Benzaldehyde	35	α -Isomethylionone
6	Terpinolene	36	Isoeugenol
7	Linalool	37	Vanillin
8	Benzyl alcohol	38	Butylphenyl methylpropional
9	Salicylaldehyde	39	Amyl salicylate
10	Menthol	40	Coumarin
11	Camphor	41	Eugenyl acetate
12	α -Terpineol	42	β -Tetramethylacetyloctahydronaphthalene
13	Citronellol	43-a	α -Santalol
14	Linalyl acetate	43-b	β -Santalol
15	Methyl 2-octynoate	44	3-Propylidene phthalide
16	Geraniol	45	α -Amyl cinnamaldehyde
17	Methyl salicylate	46	trans,trans-Farnesol
18-a	Neral	47	Isoeugenyl acetate
18-b	Geranial	48	Hydroxyisohexyl 3-cyclohexene carboxaldehyde (major)
19	Carvone	49	α -Amylcinnamyl alcohol
20	Hydroxycitronellal	50	α -Acetyl cedrene
21	trans-Anethole	51	α -Hexylcinnamaldehyde
22	Dimethylbenzylcarbinyl acetate	52-a	Galaxolide 1
23	β -Caryophyllene	52-b	Galaxolide 2
24	Cinnamaldehyde	53	Benzyl benzoate
25	Geranyl acetate	54	Hexadecanolactone
26	δ -Damascone	55	Benzyl salicylate
27	Anise alcohol	56	Benzyl cinnamate
28-a	Ebanol 1	57	Sclareol
28-b	Ebanol 2		
29	Cinnamyl alcohol		
30	α -Damascone		

GC-MS System	: GCMS-QP™ 2020 NX
Column	: SH-1 (30 m x 0.25 mm I.D., 0.25 μ m) , P/N : 221-75719-30
[GC]	
Injection Method	: Split
Injection Volume	: 1 μ L
Injector Temperature	: 280°C
Carrier Gas	: He
Carrier Gas Control	: Linear velocity (40 cm/s)
Column Temperature	: 80°C (4 min) -15°C/min -105°C (2 min) - 4°C/min - 150°C (1 min) - 10°C/min - 280°C (2 min)
[MS]	
Ionsource Temp.	: 200°C
Interface Temp.	: 280°C
Emission Current	: 20 μ A

Source : Application News 01-00526 ([JP](#), [ENG](#))

CoreFocus and GCMS-QP are trademarks of Shimadzu Corporation or its affiliated companies in Japan and/or other countries.

Shimadzu Corporation
www.shimadzu.com/an/

For Research Use Only. Not for use in diagnostic procedures.

This publication may contain references to products that are not available in your country. Please contact us to check the availability of these products in your country.

The content of this publication shall not be reproduced, altered or sold for any commercial purpose without the written approval of Shimadzu.

Company names, products/service names and logos used in this publication are trademarks and trade names of Shimadzu Corporation, its subsidiaries or its affiliates, whether or not they are used with trademark symbol "TM" or "®". Third-party trademarks and trade names may be used in this publication to refer to either the entities or their products/services, whether or not they are used with trademark symbol "TM" or "®".

Shimadzu disclaims any proprietary interest in trademarks and trade names other than its own.

The information contained herein is provided to you "as is" without warranty of any kind including without limitation warranties as to its accuracy or completeness. Shimadzu does not assume any responsibility or liability for any damage, whether direct or indirect, relating to the use of this publication. This publication is based upon the information available to Shimadzu on or before the date of publication, and subject to change without notice.