

CoreFocus
Report
No.330

GC

FID

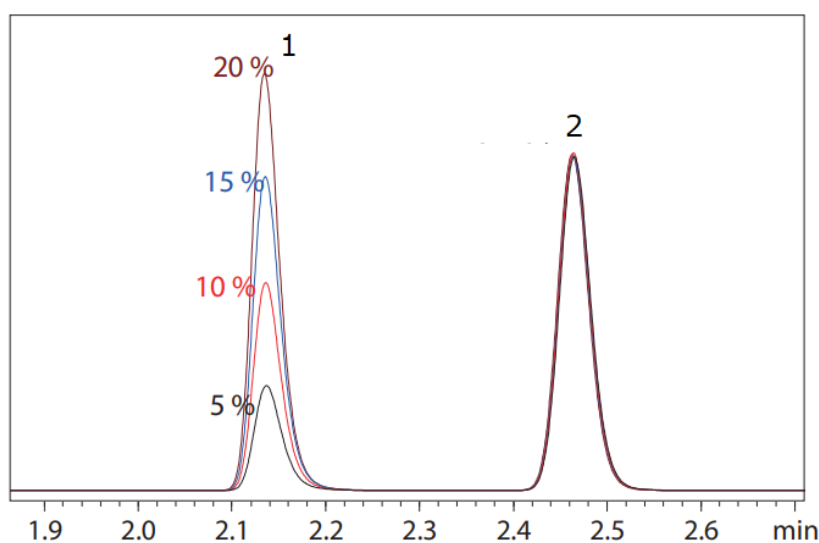
AOC

SH Series

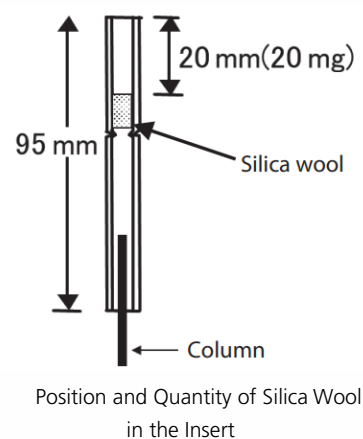
SH-1

Analysis of Ethanol in Liquors

Keywords: Alcohol, Alcohol content, Liquor tax



1.Ethanol
2.Isopropyl alcohol (IS)



Main Unit : Nexis™ GC-2030 /AOC-20i plus
Column : SH-1 (30 m x 0.53 mm I.D. df = 3.00 μm),
P/N: 221-75733-30
Detector : FID-2030
Injection Volume : 1 μL
Injection Mode : Split
Split Ratio : 1:40
Injection Unit Temp. : 250 °C

Carrier Gas : He
Carrier Gas Control : Pressure
Pressure Program : 28 kPa (3 min) - 300 kPa/min - 90 kPa (6.79 min)
Column Temp. : 50 °C (3 min) - 40 °C/min - 200 °C -
25 °C/min - 245 °C (1.45 min)
Detector Temp. : 250 °C
Detector Gas : Make up (He) 24 mL/min
H₂ 32 mL/min, Air 200 mL/min

Source : Application News G315 ([JP](#), [ENG](#))

CoreFocus and Nexis are trademarks of Shimadzu Corporation or its affiliated companies in Japan and/or other countries.

Shimadzu Corporation
www.shimadzu.com/an/

For Research Use Only. Not for use in diagnostic procedures.

This publication may contain references to products that are not available in your country. Please contact us to check the availability of these products in your country.

The content of this publication shall not be reproduced, altered or sold for any commercial purpose without the written approval of Shimadzu.

Company names, products/service names and logos used in this publication are trademarks and trade names of Shimadzu Corporation, its subsidiaries or its affiliates, whether or not they are used with trademark symbol "TM" or "®". Third-party trademarks and trade names may be used in this publication to refer to either the entities or their products/services, whether or not they are used with trademark symbol "TM" or "®".

Shimadzu disclaims any proprietary interest in trademarks and trade names other than its own.

The information contained herein is provided to you "as is" without warranty of any kind including without limitation warranties as to its accuracy or completeness. Shimadzu does not assume any responsibility or liability for any damage, whether direct or indirect, relating to the use of this publication. This publication is based upon the information available to Shimadzu on or before the date of publication, and subject to change without notice.