

Extraction of a Comprehensive Steroid Panel from Human Urine Using EVOLUTE® EXPRESS ABN Prior to LC/MS-MS Analysis

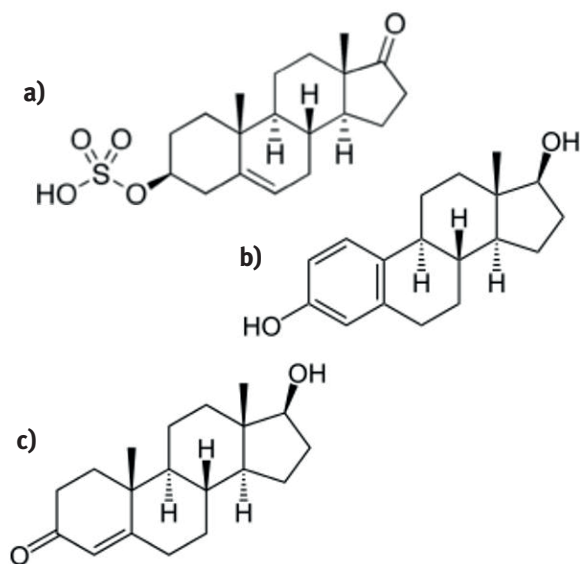


Figure 1. Structures of (a) DHEAS, (b) Estradiol and (c) Testosterone.

Introduction

This application note describes the extraction of a panel of 19 steroid hormones from human urine using EVOLUTE® EXPRESS ABN solid phase extraction plates prior to LC-MS/MS analysis. The simple sample preparation procedure delivers clean extracts and analyte recoveries greater than 75% with RSDs lower than 5% for most analytes. Linearity of greater than 0.999 is achieved for all analytes in the range 1–1000 pg/mL.

Manual sample preparation was performed using the Biotage® Pressure+ 96 Positive Pressure Manifold. The sample preparation method is automatable using the Biotage® Extrahera™. See Appendix for automation parameters and comparative data generated using the automated method.

EVOLUTE EXPRESS products dramatically improve flow characteristics and enhance sample preparation productivity.

Analytes

Cortisol, 18-OH-Corticosterone, 21-Deoxycortisol, Cortisone, Estradiol, 17-OH-Pregnenolone, Aldosterone, 11-Deoxycortisol, Corticosterone, Estrone, Dehydroepiandrosterone (DHEA), 17-OH-Progesterone, Dehydroepiandrosterone sulfate (DHEAS), Testosterone, Dihydrotestosterone (DHT), Pregnenolone, Androstenedione, 11-deoxycorticosterone, Progesterone

Internal Standards

Dihydrotestosterone-D₃ (DHT-D₃) and Aldosterone-D₃

Sample Preparation Procedure

Format

EVOLUTE® EXPRESS ABN 10 mg plate, (p/n) 600-0010-PX01

Sample Pre-treatment

Add 20 µL of a 10 pg/µL methanolic ISTD solution to 200 µL of human urine and mix to give a final concentration of 1 ng/mL. Dilute sample 1:1 (v/v) with water and mix.

Condition (optional)

Condition wells with methanol (500 µL)

Equilibration (optional)

Equilibrate wells with 0.1% Formic Acid (aq) (500 µL)

Sample loading

Load 400 µL of pre-treated urine into each well

Wash 1

Elute interferences with H₂O (500 µL)

Wash 2

Elute interferences with H₂O:MeOH (60:40, v/v, 500 µL)

Elution

Elute analytes with methanol (200 µL)

Post Elution and Reconstitution

Dry the extract in a stream of air or nitrogen using a Biotage® SPE Dry at 40 °C, at a flow rate of 20 to 40 L/min, for approximately 20 minutes.

Reconstitute evaporated samples with mobile phase A: mobile phase B (50:50, v/v, 200 µL) and vortex mix. Cover plate with a sealing mat prior to injection.



UHPLC Conditions

Instrument

Shimadzu Nexera X2 UHPLC

Column

ACE C18 (100 mm x 2.1 mm, 1.7 µm) (Advanced Chromatography Technologies Ltd, Aberdeen, UK) with EXP Guard column holder fitted with a C-18 cartridge (Restek, UK)

Mobile Phase

A: 0.2 mM Ammonium Fluoride (aq)

B: Methanol

Flow Rate

0.4 mL/min

Column Temperature

40 °C

Injection Volume

5 µL

Table 1. UHPLC Gradient.

Time (min)	%A	%B
0	50	50
2	50	50
5	40	60
8	10	90
9	5	95
9.1	5	95
9.2	50	50

Table 2. MS conditions for target analytes in positive and negative mode.

Analytes	MRM Transition	Collision Energy	Ion Mode
DHEAS	367.1>97.05 (367.1>191.05)	33	-
Cortisol	363.4>121.25 (363.40>327.15)	-24	+
18-OH-Corticosterone	363.3>269.2 (363.30>121.10)	-16	+
Cortisone	361.3>163.15 (361.30>329.15)	-22	+
21-Deoxycortisol	347.1>311.2 (347.10>269.20)	-16	+
Estradiol	271.1>145.2 (271.10>183.25)	39	-
Aldosterone-D ₄	363.1>190.3	19	-
Aldosterone	359.1>189.25 (359.00>297.15)	18	-
17-OH-Pregnenolone	315.3>297.2 (315.30>251.00)	-13	+
11-Deoxycortisol	347.3>109.25 (347.30>283.15)	-27	+

MS Conditions

Instrument

Shimadzu 8060 Triple Quadrupole MS using ES interface

Nebulizing Gas Flow

3 L/min

Drying Gas Flow

3 L/min

Heating Gas Flow

17 L/min

Interface Temperature

400 °C

DL Temperature

250 °C

Heat Block Temperature

400 °C

Interface Temperature

400 °C

CID Gas Flow

270 kPa

For optimum sensitivity, data was acquired in both positive and negative ion modes, as appropriate, shown in Table 2.

Analytes	MRM Transition	Collision Energy	Ion Mode
Corticosterone	347.3>329.25 (347.30>283.15)	-16	+
Esterone	269.2>145.2 (269.20>143.20)	37	-
11-Deoxycorticosterone	331.3>109.05 (331.30>97.25)	-25	+
DHEA	271.10>253.20 (271.10>213.20)	-13	+
Testosterone	289.3>97.05	-23	+
DHT-D ₃	294.4>258.25	-16	+
DHT	291.3>255.25	-15	+
Androstenedione	287.3>97.2 (287.30>109.20)	-21	+
Pregnenolone	299.3>159.25 (299.30>281.20)	-20	+
17-OH-Progesterone	331.3>97.1	-22	+
Progesterone	315.2>97.2 (331.30>109.15)	-22	+

Results

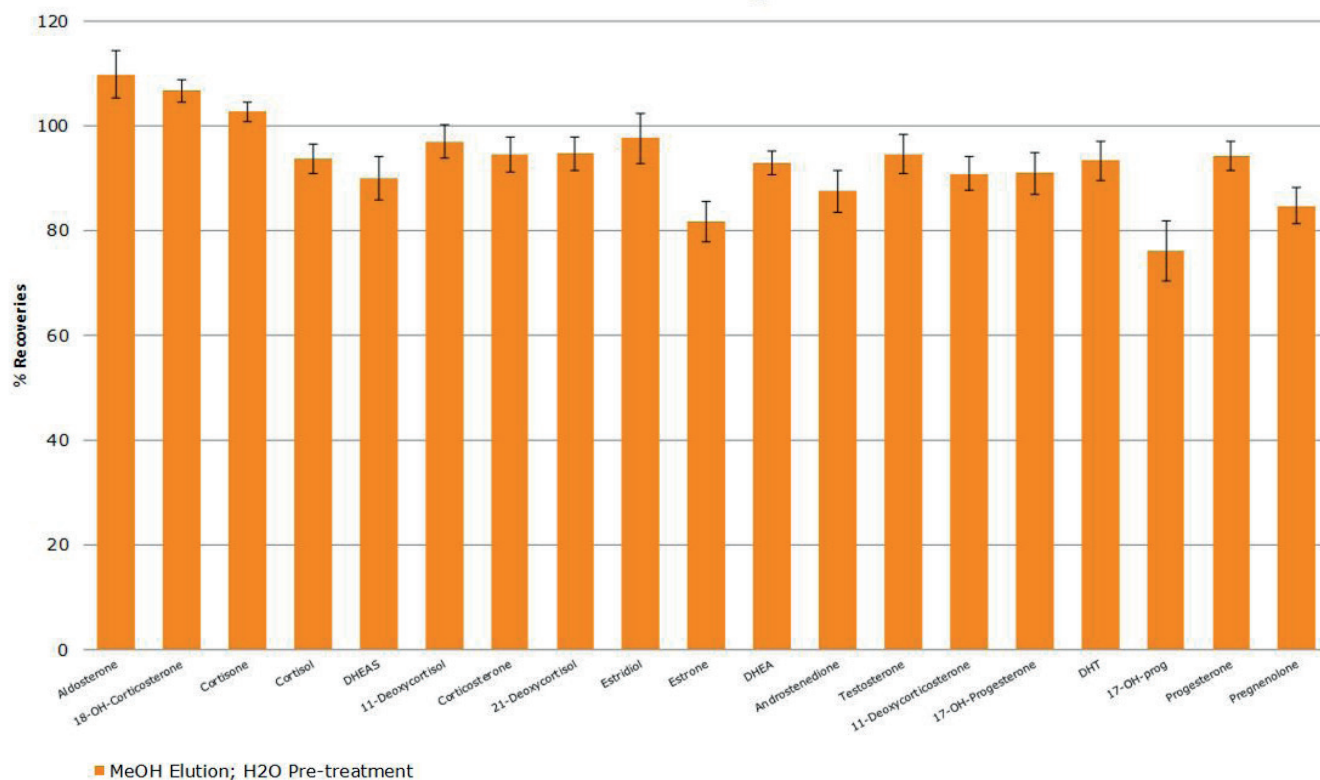


Figure 2. Typical analyte % extraction recoveries (n=7) using methanol as the elution solvent.

This optimized SPE protocol delivers typical analyte recoveries above 75%, with corresponding RSDs below 5%, with a few exceptions. Inclusion of the polar DHEAS metabolite requires methanol as the elution solvent. If DHEAS is not required, alternative elution solvents such as ethyl acetate may be used. Recovery data for methanol elution is shown below in Figure 2.

Figure 3. demonstrates representative chromatography obtained from stripped urine spiked at 5 ng/mL. Satisfactory resolution of the various isobars was obtained using the ACE C18 UHPLC column. In order to achieve low level detection of analytes in positive and negative ion modes a combination of 0.2 mM NH_4F (aq) and MeOH was utilized in the mobile phase.

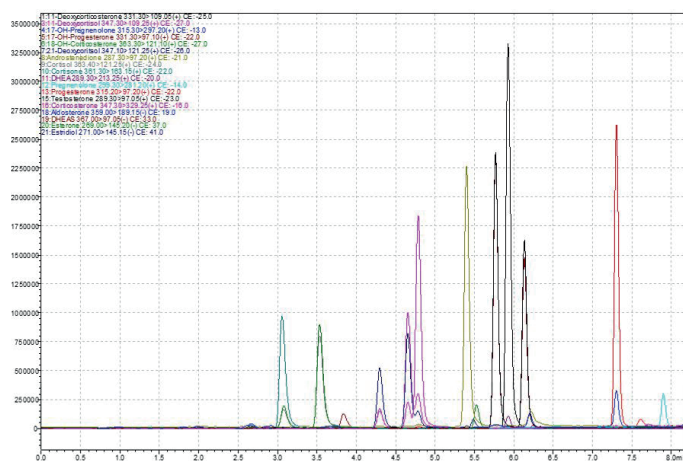


Figure 3. Representative chromatography for stripped urine spiked at 5 ng/mL.

Calibration curve performance was investigated from female urine spiked in the range 1–1000 pg/mL. Good linearity was observed for all analytes typically delivering r^2 values greater than 0.999. Table 3. details linearity performance and associated LOQ for each analyte. Selected calibration curves are demonstrated in Figure 4.

Table 3. Analyte calibration curve r^2 and LOQ performance.

Analytes	r^2	LLOQ (pg/mL)
DHEAS	0.9997	50
Cortisol	0.9996	1
18-OH-Corticosterone	0.9996	10
Cortisone	0.9997	< 10
21-Deoxycortisol	0.9992	5
Estradiol	0.9991	25
Aldosterone	0.9990	100
17-OH-Pregnenolone	0.9993	< 250
11-Deoxycortisol	0.9993	1
Corticosterone	0.9995	< 1
Estrone	0.9992	< 5
11-Deoxycorticosterone	0.9993	< 5
DHEA	0.9992	< 25
Testosterone	0.9994	< 5
DHT	0.9991	< 5
Androstenedione	0.9994	5
Pregnenolone	0.9992	50
17-OH-Progesterone	0.9990	10
Progesterone	0.9990	< 50

Chemicals and Reagents

- » Methanol (LC-MS grade), Ultra-Pure Methanol (Gradient MS) and formic acid (98%) were purchased from Honeywell Research Chemicals (Bucharest, Romania).
- » All analyte standards and deuterated internal standards were purchased from Sigma- Aldrich Company Ltd. (Gillingham, UK).
- » Water (18.2 M Ω -cm), was drawn fresh daily from a Direct-Q5 water purifier (Merck Millipore, Watford, UK).
- » Mobile phase A (0.2 mM ammonium fluoride (aq)) was prepared by adding 7.4 mg of ammonium fluoride to 1 L with purified water.
- » Internal standards (100 pg/ μ L) were prepared from a 10 ng/ μ L stock solution by adding 10 μ L of each to 950 μ L of MeOH. 10 μ L of this solution was then added to each calibration sample.
- » Equilibration solvent (0.1% formic acid) was made by adding 100 μ L of formic acid to 99.9 mL of water (18.2 M Ω -cm)
- » Wash 2 solvent (H₂O:MeOH, 60:40, v/v) was made up by adding 60 mL of water to 40 mL of methanol and mixing.
- » Reconstitution solvent was made by mixing 50 mL of mobile A and 50 mL of mobile phase B.

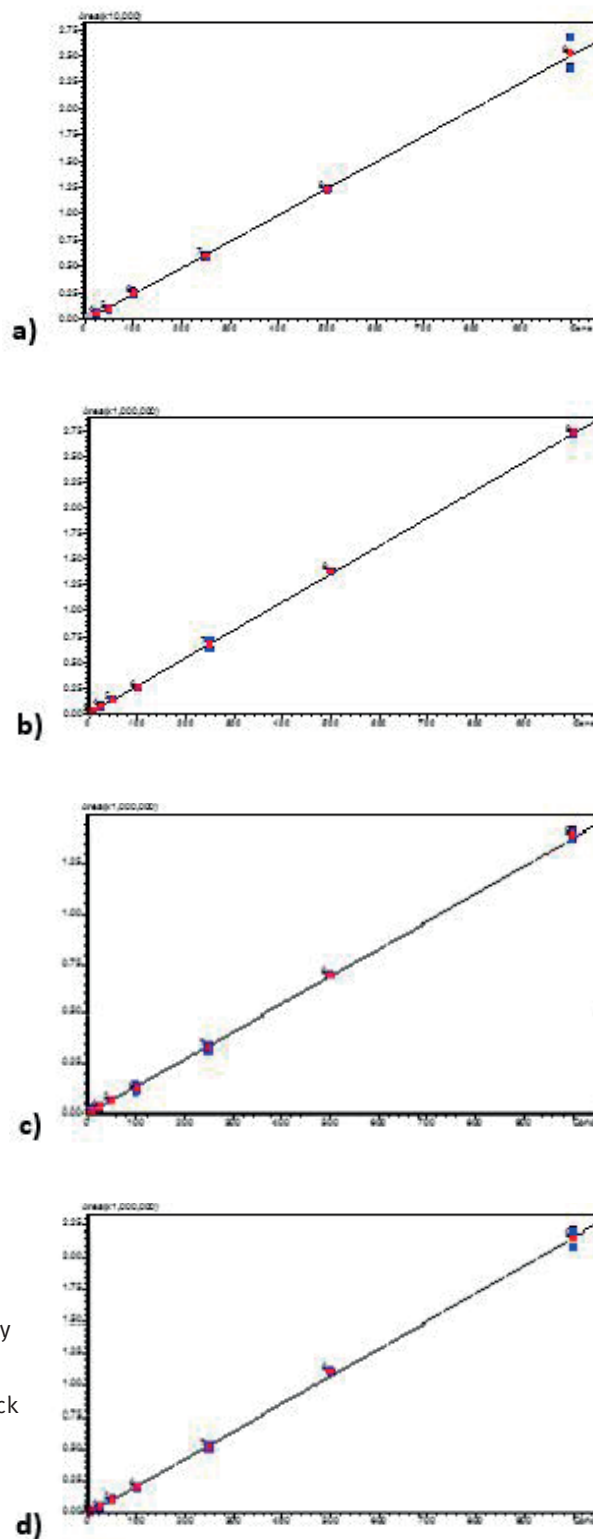


Figure 4. Calibration curves for Estradiol (a), Testosterone (b), 17-OH-Progesterone (c) and Androstenedione (d).

Additional Information

- » All data shown in this application note was generated using fresh urine provided by healthy human volunteers.
- » Ammonium fluoride increased sensitivity in both positive and negative ion modes.
- » Other strategies for increasing sensitivity:
 - » Increase matrix volumes above 200 μ L
 - » Decrease reconstitution solvent volume below 200 μ L
 - » Increase injection volumes above 10 μ L.
- » Steroids can exhibit non-specific binding to plastic collection plates. Different plastics exhibit different binding characteristics. Addition of 2 μ L of ethylene glycol to the collection plate prior to evaporation can mitigate this issue. Note: No ethylene glycol was used in generation of the data shown in this application note, utilizing collection plate p/n 121-5203.

Ordering Information

Part Number	Description	Quantity
600-0010-PX01	EVOLUTE® EXPRESS 10 mg ABN 96 fixed well plate	1
PPM-96	Biotage® PRESSURE+ 96 Positive Pressure Manifold	1
SD-9600-DHS-EU	Biotage® SPE Dry 96 Sample Evaporator 220/240 V	1
SD-9600-DHS-NA	Biotage® SPE Dry 96 Sample Evaporator 100/120 V	1
121-5203	Collection Plate, 2 mL Square	50
121-5204	Pierceable Sealing Mat	50

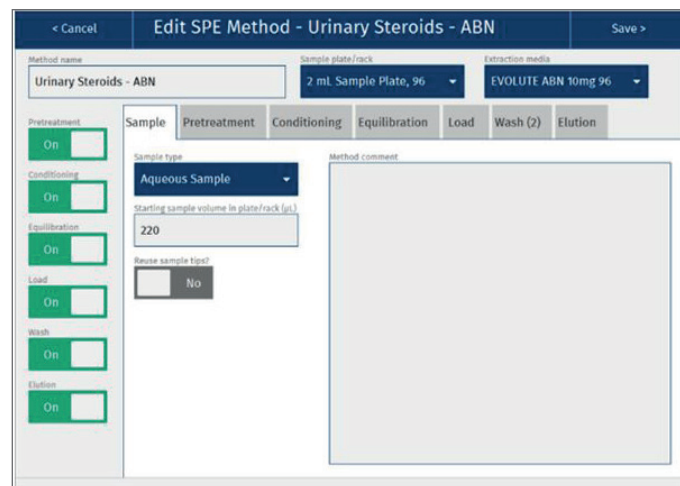
Appendix

Biotage® Extrahera™ Settings

The method described in this application note was automated using Biotage® Extrahera™ and EVOLUTE® EXPRESS ABN 10 mg 96-well plates. This appendix contains the software settings required to configure Extrahera to run this method.

Comparable results were obtained using both manual and automated processing methods.

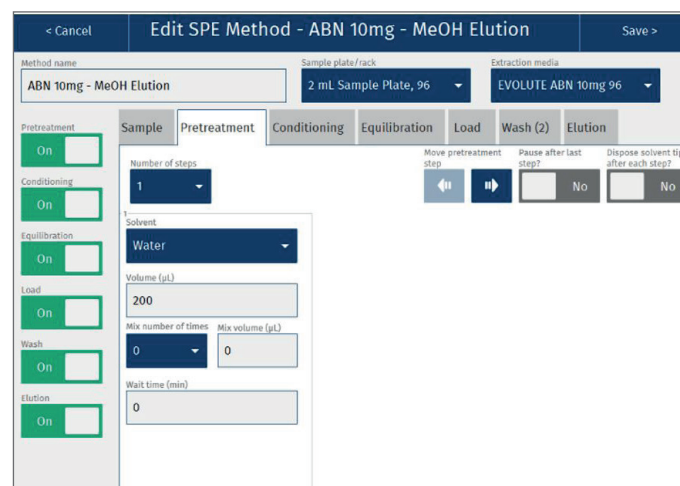
Sample Name:	Urinary Steroids - ABN
Sample Plate/Rack:	2 mL Sample Plate, 96
Extraction Media:	EVOLUTE® EXPRESS ABN 10 mg 96



Settings

“Sample” Tab

Sample Type:	Aqueous Sample
Starting Sample Volume (µL):	220
Method Comment:	



Pre-treatment	
No. of steps	1
Pause after last step	No
Dispose tips after last step	No

Solvent	
1	Water
2	
3	
4	

	1	2	3	4
Volume (µL)	200			
Wait Time (min)				

Edit SPE Method - Urinary Steroids - ABN

Method name: Urinary Steroids - ABN | Sample plate/rack: 2 mL Sample Plate, 96 | Extraction media: EVOLUTE ABN 10mg 96

Conditioning

Number of steps: 1 | Pressure (bar): 0.9

Solvent: Methanol

Volume (µL): 500 | Collect in position: D (Was...)

Positive pressure time (s): 30 | Advanced pressure settings: Edit...

Repeat (number of times): 1 | Pause after this step? No

Dispose solvent tips after each step? No

Conditioning	
Pressure	0.9
Pause after each load	No
Volume	500
Collect in position	D
Positive pressure time	30
Advanced Pressure	No
Number of times	1

Solvent	
1	Methanol
2	
3	
4	

Edit SPE Method - Urinary Steroids - ABN

Method name: Urinary Steroids - ABN | Sample plate/rack: 2 mL Sample Plate, 96 | Extraction media: EVOLUTE ABN 10mg 96

Equilibration

Number of steps: 1 | Pressure (bar): 0.9

Solvent: 0.1% Formic acid

Volume (µL): 500 | Collect in position: D (Was...)

Positive pressure time (s): 45 | Advanced pressure settings: Edit...

Repeat (number of times): 1 | Pause after this step? No

Dispose solvent tips after each step? No

Equilibration	
Pressure	0.9
Volume	500
Collect in position	D
Positive pressure time	45
Advanced Pressure	No
Number of times	1
Number of times	1

Solvent	
1	0.1% Formic Acid

Edit SPE Method - Urinary Steroids - ABN

Method name: Urinary Steroids - ABN | Sample plate/rack: 2 mL Sample Plate, 96 | Extraction media: EVOLUTE ABN 10mg 96

Load

Volume (µL): 400 | Pressure (bar): 0.7

Pause after each load? No | Collect in position: D (Waste)

Positive pressure time (s): 45 | Advanced pressure settings: Edit...

Premix? Yes | Number of times: 3 | Tip conditioning? No

Rinsing? No | Rinse volume (µL): 0 | Conditioning solvent: [dropdown]

Rinse solvent: [dropdown]

Load	
Pressure	0.7
Pause after each load	No
Volume	400
Collect in position	D
Positive pressure time	45
Premix	Yes
Number of times	3

Edit SPE Method - Urinary Steroids - ABN

Method name: Urinary Steroids - ABN | Sample plate/rack: 2 mL Sample Plate, 96 | Extraction media: EVOLUTE ABN 10mg 96

Wash (2)

Step	Number of steps	Pressure (bar)	Plate dry after last wash?	Plate dry time (s)	Dispose solvent tips after each step?
1	2	0.9	Yes	300	No
2	2				

Solvent 1: Water, Volume: 500 µL, Collect in position: D (Was...), Positive pressure time: 60 s, Repeat: 1 times, Pause after this step: No

Solvent 2: MeOH-Water (40:60), Volume: 500 µL, Collect in position: D (Was...), Positive pressure time: 60 s, Repeat: 1 times, Pause after this step: No

Wash 1	
Pressure	0.9
Volume	500
Collect in position	D
Positive pressure time	60
Advanced Pressure	No
Number of times	1

Wash 2	
Pressure	0.9
Volume	500
Collect in position	D
Positive pressure time	60
Advanced Pressure	No
Number of times	1
Plate Dry	YES

Solvent	
1	Water
2	60:40 Water:MeOH

Edit SPE Method - Urinary Steroids - ABN

Method name: Urinary Steroids - ABN | Sample plate/rack: 2 mL Sample Plate, 96 | Extraction media: EVOLUTE ABN 10mg 96

Elution

Step	Number of steps	Pressure (bar)	Plate dry after last elution?	Plate dry time (s)	Dispose solvent tips after each step?
1	1	0.9	No	0	No

Solvent 1: Methanol, Volume: 200 µL, Collect in position: A, Positive pressure time: 200 s, Repeat: 1 times, Pause after this step: No

Elution	
No. of steps	1
Pressure	
Plate Dry	No
Dry time	
Wait time (min)	

Solvent	
1	Methanol

Edit Advanced Pressure Settings

Use advanced pressure settings? Yes

Number of steps: 3

Step	Pressure (bar)	Positive pressure time (s)
1	0.5	30
2	0.9	10
3	2.0	10

Plate dry? No | Plate dry time (s): 0

	1
Volume	200
Position	A
Pressure time	0
Repeat	1
Pause	No

Advance Settings

Advanced Pressure:
 2 Steps; 0.5 bar for 30 seconds; 0.9 Bar for 10 seconds; 2.0 bar for 10 seconds

Solvent Properties

Solvent Description	
1	Methanol
2	Water
3	0.1% Formic Acid
4	Water
5	60:40 Water:Methanol



Solvent	1	2	3	4	5	6	7	8	9	10
Reservoir Type	Refillable					Non Refillable				
Capacity	10	10	10	10	10					
Aspiration flow rate (mL/min)	20	10	20	20	20					
Dispense flow rate (mL/min)	20	20	20	20	20					
Lower air gap flow rate (mL/min)	5	5	5	5	5					
Lower air gap volume (µL)	120	20	20	20	120					
Upper air gap flow rate (mL/min)	100	100	100	100	100					
Upper air gap volume (µL)	300	300	300	300	300					
Upper air gap dispense pause	Yes	Yes	Yes	Yes	Yes					
Conditioning?	3	2	2	2	3					
Conditioning number of times	20	20	20	20	20					
Conditioning flow rate (mL/min)	No	No	No	No	No					
Chlorinated	No	No	No	No	No					
Serial dispense	No									

< Cancel
Edit Sample - Aqueous Sample
Save >

Sample

Sample name

Sample description

Aspiration flow rate (mL/min)

Dispense flow rate (mL/min)

Air Gap

Lower air gap flow rate (mL/min)

Lower air gap volume (µL)

Upper air gap flow rate (mL/min)

Upper air gap volume (µL)

Upper air gap dispense pause (ms)

Aspirate

Aspirate post dispense?
 Yes

"Sample" Screen	
Sample name	Aqueous sample
Sample description	Default settings for Aqueous
Aspiration flow rate	10
Dispense flow rate	20
Lower air gap flow rate	20
Lower air gap volume	5
Upper air gap flow rate	120
Upper air gap volume	100
Upper air gap dispense pause	300

< Cancel Edit Extraction Media - EVOLUTE ABN 10mg 96 Save >

<p>Extraction Media</p> <p>Name EVOLUTE ABN 10mg 96</p> <p>Manufacturer Biotage</p> <p>Part number 600-0010-PX01</p> <p>Capacity volume (µL) 1000</p> <p>Format 96</p> <p>Comment</p>	<p>Pipetting Height</p> <p>Solvent dispensation height (mm) -150.0</p> <p>Sample dispensation height (mm) -125.0</p> <p>Aspiration height (mm) -125.0</p> <p>Tune Pipetting Heights...</p>
--	---

“Extraction Media” Screen

Name	EVOLUTE® EXPRESS ABN 10 mg 96 well plate
Manufacturer	Biotage
Part number	600-0010-PX01
Capacity volume	1000
Format	96
Comment	
Solvent dispensation height	-150
Sample dispensation height	-125
Aspiration height	-125

< Cancel Edit Sample Plate/Rack - 2 mL Sample Plate, 96 Save >

<p>Sample Plate/Rack</p> <p>Name 2 mL Sample Plate, 96</p> <p>Capacity volume (µL) 1800</p> <p>Format 96</p>	<p>Pipetting Height</p> <p>Aspiration height (mm) -162.0</p> <p>Pretreatment dispensation height (mm) -128.0</p> <p>Tune Pipetting Heights...</p>
---	--

“Sample Plate/Rack” Screen

Name	2 mL Sample plate, 96
Capacity volume	1800
Format	96
Aspiration height	-162
Pretreatment dispensation height	-128

< Cancel	Edit Pipette Tip - 1000 µL Biotage tip	Save >
Pipette Tip		
Name		
1000 µL Biotage tip		
Manufacturer		
Biotage		
Part number		
414141		
Capacity (µL)		
1000		
Length (mm)		
95		

"Pipette tip" Screen

Name	1000 µL Biotage Tip
Manufacturer	Biotage
Part number	414141
Capacity (µL)	1000
Length (mm)	95

Results

Using the parameters described in this appendix, analyte recoveries, %RSDs, linearities and LOQs were comparable for both manually processed and automated methods.

A comparison of analyte recoveries obtained through manual and automated processing is shown in figure 5.

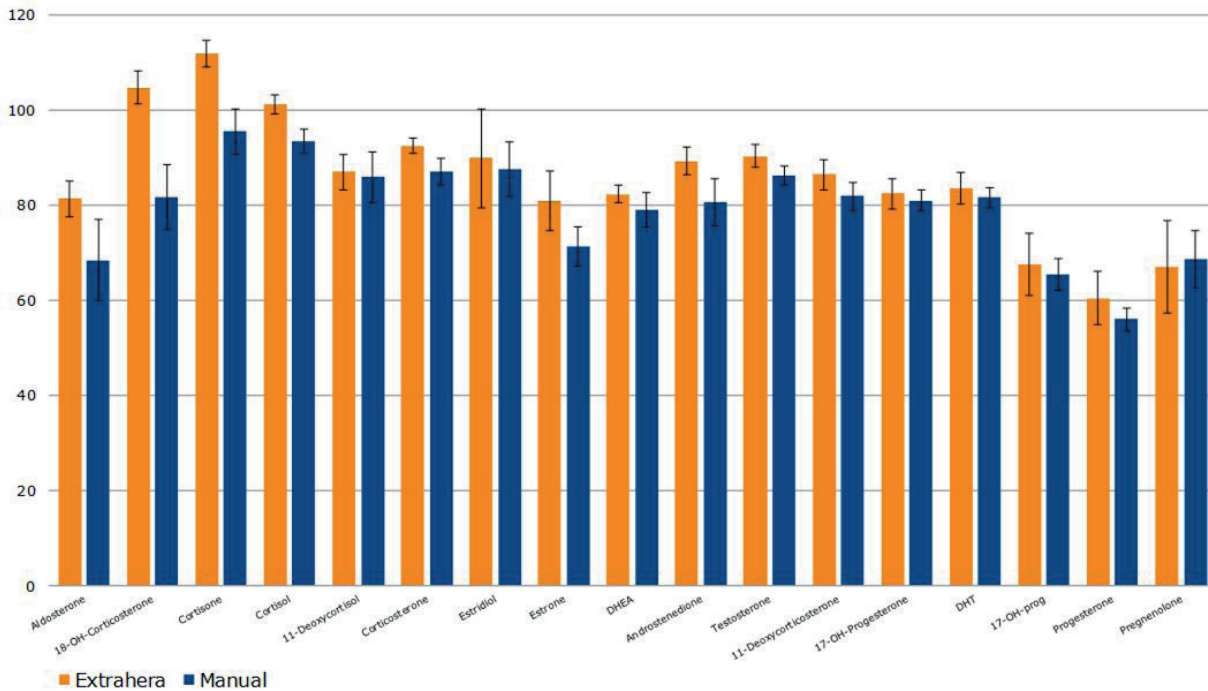


Figure 5. Comparison of steroid recovery and RSD (manual vs automated processing)

EUROPE

Main Office: +46 18 565900
 Toll Free: +800 18 565710
 Fax: +46 18 591922
 Order Tel: +46 18 565710
 Order Fax: +46 18 565705
 order@biotage.com
 Support Tel: +46 18 56 59 11
 Support Fax: +46 18 56 57 11
 eu-1-pointsupport@biotage.com

NORTH & LATIN AMERICA

Main Office: +1 704 654 4900
 Toll Free: +1 800 446 4752
 Fax: +1 704 654 4917
 Order Tel: +1 704 654 4900
 Order Fax: +1 434 296 8217
 ordermailbox@biotage.com
 Support Tel: +1 800 446 4752
 Outside US: +1 704 654 4900
 us-1-pointsupport@biotage.com

JAPAN

Tel: +81 3 5627 3123
 Fax: +81 3 5627 3121
 jp_order@biotage.com
 jp-1-pointsupport@biotage.com

CHINA

Tel: +86 21 68162810
 Fax: +86 21 68162829
 cn_order@biotage.com
 cn-1-pointsupport@biotage.com

KOREA

Tel: +82 31 706 8500
 Fax: +82 31 706 8510
 korea_info@biotage.com
 kr-1-pointsupport@biotage.com

INDIA

Tel: +91 22 4005 3712
 india@biotage.com

Distributors in other regions are listed on www.biotage.com

Part Number: AN922

© 2019 Biotage. All rights reserved. No material may be reproduced or published without the written permission of Biotage. Information in this document is subject to change without notice and does not represent any commitment from Biotage. E&OE. A list of all trademarks owned by Biotage AB is available at www.biotage.com/legal. Other product and company names mentioned herein may be trademarks or registered trademarks and/or service marks of their respective owners, and are used only for explanation and to the owners' benefit, without intent to infringe.