

Resolution of PEG 3000 monodispers



Chris Crafts
Product and Applications Specialist
ESA (A Dionex Company)

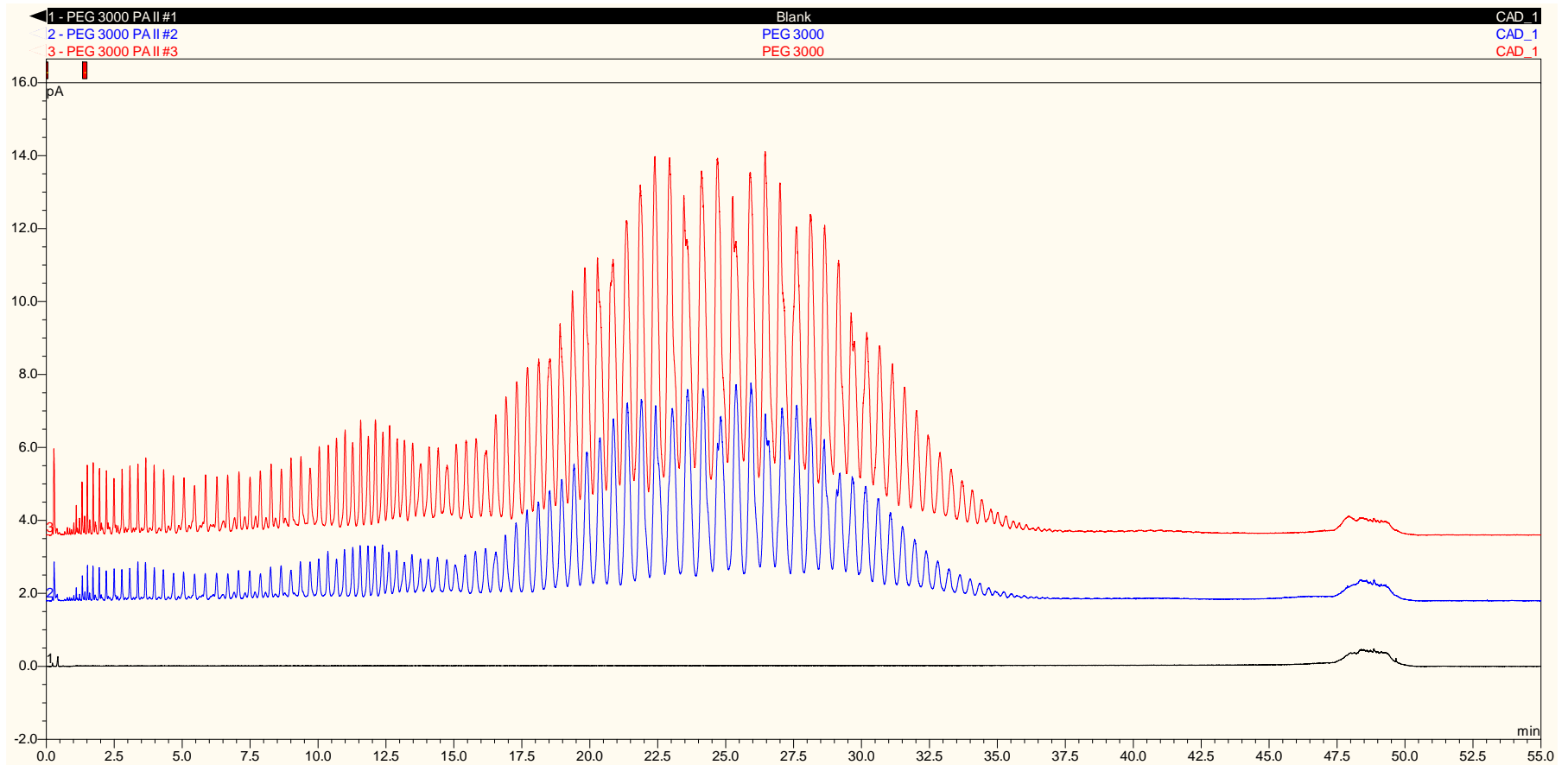


Method Conditions

- Column: Acclaim RSLC Polar Advantage II (PA2) 2.2 μm 2.1 x 50mm
- Mobile Phase A: DI Water
- Mobile Phase B: Acetonitrile
- System: Dionex UltiMate 3000 RSLC with Corona *ultra*
- Sample Solvent: DI Water
- *CAD settings.*
 - Gas: 35 psi
 - Filter: Medium

Time	% B
0	3
1	12
3	17
12	26
17	27.5
24	28.5
33	31
43	37
47	50
48	80
49	3
50	3

Analysis of PEG 3000



Overlay of two injections of PEG 3000 @ 24.5mg/ml and a blank DI water: Red 2 µL injection, Blue 1 µL injection, Black 2 µL DI water injection.