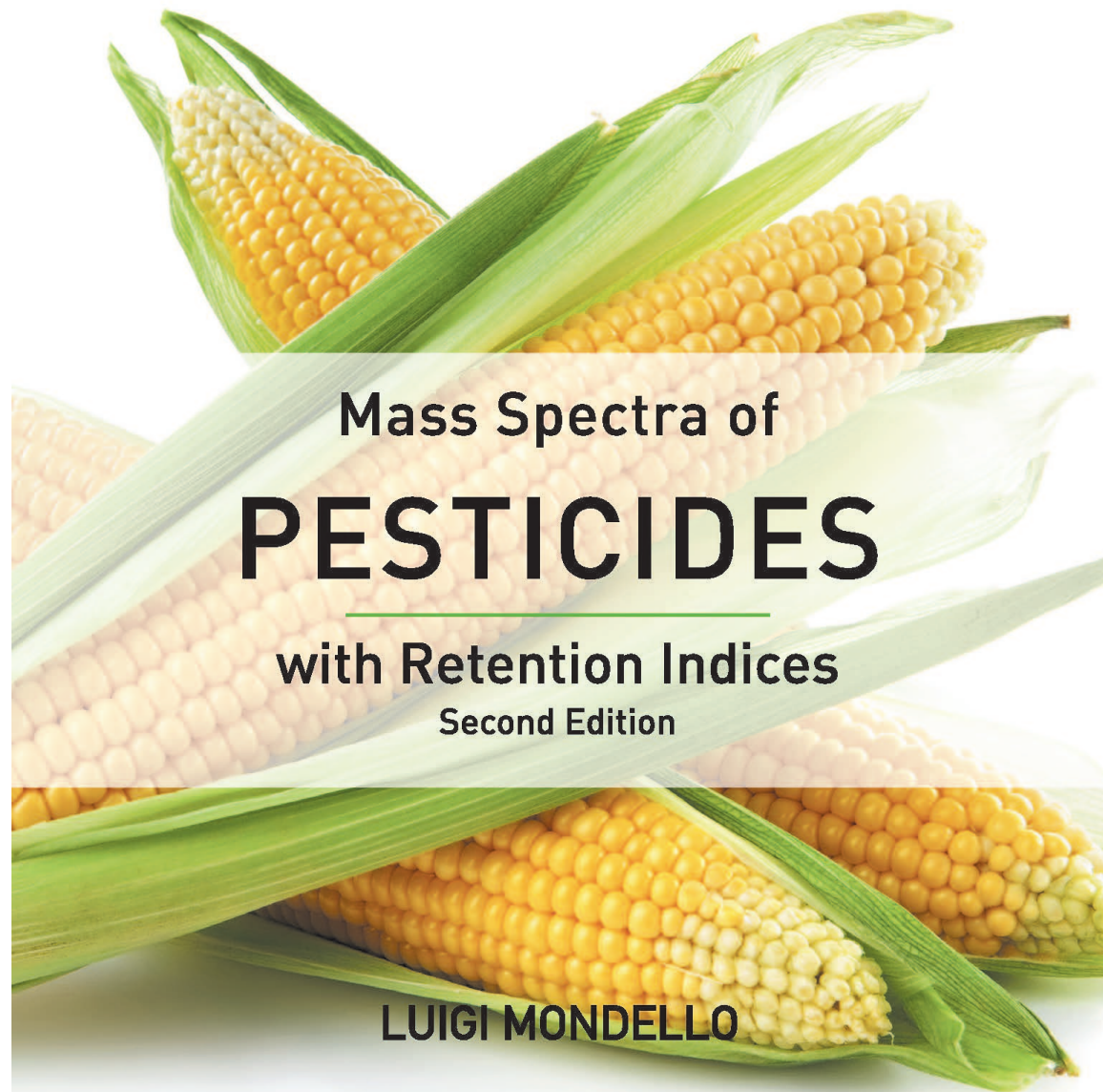


Mass Spectra of Pesticides with Retention Indices  
USER MANUAL VERSION 1.00

**USER MANUAL**

**VERSION 1.0**



Mass Spectra of  
**PESTICIDES**

with Retention Indices  
Second Edition

**LUIGI MONDELLO**

**WILEY**

Disc Compilation Copyright © 2016 John Wiley and Sons, Inc. Hoboken, NJ. All Rights Reserved

Installation Manual Copyright © 2016 John Wiley and Sons, Inc. Hoboken, NJ. All Rights Reserved.

Mass Spectra of Pesticides with Retention Indices, 2<sup>nd</sup> Edition Database Copyright © 2016  
John Wiley and Sons, Inc. Hoboken, NJ. All Rights Reserved

This document may not be reproduced by any method, translated, transmitted, or stored in a retrieval system without prior written permission of John Wiley and Sons, Inc. Although every effort is made to ensure accuracy, John Wiley and Sons, Inc. cannot be held responsible for errors or omissions and reserves the right to revise this document without notice. The software described in this document is furnished under license and may be used and copied only in accordance with the terms of such license.

All the trademarks used in this documentation are acknowledged. Wiley Registry® is a registered trademark of John Wiley and Sons, Inc. in the United States, the European Union, and other countries.

No part of this database may be reproduced, stored in a retrieval system, or transmitted, in any form or by any means, electronic, mechanical, photocopying, recording, or otherwise, without prior written permission from John Wiley and Sons, Inc. The database contained on this CD-ROM is protected under the European Database Directive (Directive 96/9EC).

John Wiley and Sons, Inc. Hoboken, NJ.

Wiley-ProudlySupports: [Research4Life](#)

 Please do not print this manual.

**The unauthorized reproduction or distribution copyrighted work is illegal. Criminal copyright infringement, including infringement without monetary gain, is investigated by the FBI and is punishable by fines and federal imprisonment.**

**TABLE OF CONTENTS**

Publisher's Note .....	4
Compound Search .....	4
CONTACT INFORMATION .....	5
Editorial Correspondence .....	5
Customer Care.....	5
COMPLIANCE.....	5
GETTING STARTED .....	6
Hardware and Software Recommendations .....	6
Registration Code .....	6
License.....	6
COMPATIBILITY .....	7
DIRECTORY ASSISTANCE .....	7
Quick-Start .....	8
STEP-BY-STEP INSTALLATION.....	9
Getting Help .....	13
SEARCH TIPS .....	14
GENERAL DATABASE CONTENT .....	15
Basic Functions .....	15
DATA SUBMISSION .....	16
JOHN WILEY AND SONS, INC. END USER LICENSE AGREEMENT.....	17

## PUBLISHER'S NOTE

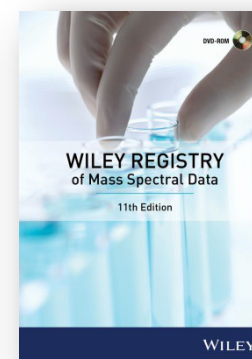
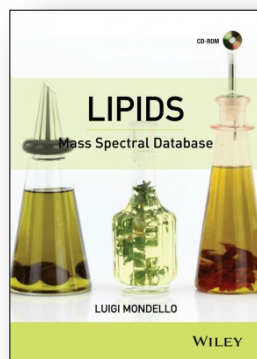
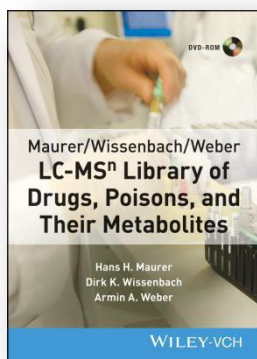
For over 45 years, John Wiley and Sons and Wiley-VCH have worked with the world's leading researchers and practitioners to deliver the spectral libraries mass spectrometrists have come to rely on as the gold standard in mass spectrometry.

Pesticides and agrochemicals are widely used in the production of large-scale agriculture. Their determination is essential for consumer's health protection. Mass spectrometry is the most important technology for pesticide analysis and the Pesticides Library provides significant support for peak assignment in complex mixtures. **The Mass Spectra of Pesticides with Retention Indices, 2nd Edition**, contains 1,300 pesticide molecules classified in 20 different classes. This edition features 342 new pesticides compounds, 1,300 LRI values on a SLB-5ms column, and 147 LRI values on an EQUITY-1 column. Mass spectra, relative to standard and well-known simple matrix components, were obtained and recorded through GC-qMS separation/identification. Furthermore, information relative to each component (CAS number, common name, systematic name, nominal mass (as Mol Wt), compound formula, chemical class) plus Linear Retention Index (LRI) values are included.

## COMPOUND SEARCH

Address: <http://www.compoundsearch.com>

**Compound Search** is a free web-based database that provides free instant access to the latest compounds covered by Wiley and NIST spectral libraries.



**CONTACT INFORMATION**  
**EDITORIAL CORRESPONDENCE**

Wiley welcomes contributions of spectra of compounds, especially novel compounds not presently covered in the spectral library. Wiley can handle data in any machine-readable format. Data submissions, editorial notes, corrections, should be sent to the address, below.

**WileyScience Solutions**

c/o John Wiley & Sons, Inc.

111 River Street

Hoboken, NJ 07030-5774 USA

Telephone: +1-201-748-6000

Fax: +1-201-748-8888

Email: [dbinquiry@wiley.com](mailto:dbinquiry@wiley.com)

Website: <http://www.wiley.com/go/databases>

**CUSTOMER CARE**

Customer care is available online or through correspondence at:

**Customer Care Center – Consumer Accounts**

10475 Crosspoint Blvd.

Indianapolis, IN 46256 USA

<http://support.wiley.com>

**COMPLIANCE**

Products manufactured by WTS are in compliance with Directive 2011/65/EU of the European Parliament and of the Council of 8 June 2011 on the restriction of the use of certain hazardous substances in electrical and electronic equipment (also known as “RoHS Recast”). In addition, this declaration of conformity is issued under the sole responsibility of WTS. Specifically, products manufactured do not contain the substances listed in the table below in concentrations greater than the listed maximum value.

<b>Substance</b>	<b>Maximum Limit (ppm)</b>
Lead (Pb)	1000
Cadmium (Cd)	100
Mercury (Hg)	1000
Hexavalent Chromium (Cr6+)	1000
Poly Brominated Biphenyls (PBB)	1000
Poly Brominated Diphenyl ethers (PBDE)	1000

## GETTING STARTED

### HARDWARE AND SOFTWARE RECOMMENDATIONS

- \* Operating System: Microsoft Windows (Windows 7, Windows 8, Windows 10).
- \* CPU: AMD or Intel processor, preferably multiple core
- \* Memory: At least 2GB
- \* Disk Space: At least 2GB free disc space
- \* Software: 32-bit or 64-bit software

The library is provided in multiple formats, but is not supplied with manufacturer software. Mass spectrometry software should be installed prior to installing the mass spectrometry library, in any format.

If you have questions about the format of the database or need to order a replacement disc, please contact Wiley customer care at <http://support.wiley.com>.

### REGISTRATION CODE

A registration code is present on the Certificate of Authenticity that accompanies the packaging provided with the CD. This database may be installed on only one machine

### LICENSE

Unless specified otherwise in writing, this product is sold as a single computer license (for the avoidance of doubt, not networked). Multiple license and network licenses are available. For additional licenses, please contact your sales representative or e-mail [dbinquiry@wiley.com](mailto:dbinquiry@wiley.com)

Help keep the cost of libraries down by reporting all copyright and license violations to the publisher at [dbinquiry@wiley.com](mailto:dbinquiry@wiley.com)

## COMPATIBILITY

Wiley has provided you with a broad selection of native manufacturer formats to aid you in your installation. Please consult your software manufacturer's documentation and customer support before contacting Wiley customer support. This CD contains the following manufacturer formats:

- Agilent Chemstation
- Agilent MassHunter
- NIST MS Search
- Thermo Xcalibur
- ACD Labs
- PerkinElmer TurboMass
- Waters MassLynx

## DIRECTORY ASSISTANCE

The table below lists the formats, installation files, and their default target directories. If two directories are listed, the first directory is for the spectral data files, the second directory is for the structure files. If one directory is listed, all spectra and structure files are installed into that directory. All installations allow a manual override of the default directory path.

Format	Installation file	Default Directory
<b>Chemstation</b>	SetupLM_PESTICIDES2_Chemstation.exe	C:\Database\{libraryname}\{filename}
<b>MassHunter</b>	SetupLM_PESTICIDES2_MassHunter.exe	C:\MassHunter\Libraries\{libraryname}\{filename}
<b>MassLynx</b>	SetupLM_PESTICIDES2_MassLynx.exe	C:\MassLynx\Idendb\{libraryname}\{filename} C:\MassLynx\Idendb\STRUCTDB\{libraryname}\{filename}
<b>ACD Labs</b>	SetupLM_PESTICIDES2_SpecManager.exe	C:\Program Files\ACD2016\{libraryname}\{filename}
<b>MS Search</b>	SetupLM_PESTICIDES2_MSSearch.exe	C:\NIST14\MSSEARCH\{libraryname}\{filename}
<b>TurboMass</b>	SetupLM_PESTICIDES2_TurboMass.exe	C:\TurboMass\Idendb\{libraryname}\{filename} C:\TurboMass\Idendb\STRUCTDB\{libraryname}\{filename}
<b>Thermo Xcalibur</b>	SetupLM_PESTICIDES2_Xcalibur.exe	C:\ProgramFiles\NISTMS\MSSearc h\{libraryname}\{filename}

**QUICK-START**

- 1. Registration Code:** After reading the EULA contained in the CD packaging, note the **Registration Code** found on the Certificate of Authenticity provided and begin installation.
- 2. Computer ID:** The installation program will combine the Registration Code with unique information from your computer to generate a unique **Computer ID**. If the computer is attached to the Internet, the installer can automatically register your computer and provide a **Registration Code**. If the computer is not attached to the Internet, follow procedure 2a or 2b, below, to manually register your installation.
  - 2a. COMPUTER ID – no direct Internet:** Note the COMPUTER ID and Registration Code and go to <https://www.wileyptmediareg.com/Activation> and follow the on-screen instructions. Note the resulting Registration Code and use it to complete on-screen installation prompts on the computer.
  - 2b. COMPUTER ID – no Internet:** contact Wiley customer support at <http://support.wiley.com> or contact them by telephone at (877) 762-2974.
- 3. INSTALLATION:** Please note installation requires the Registration Code that accompanied your disc packaging. Install the formats you wish to use on a single computer, following the on-screen prompts to “run” the installer. NB: You must “run” the installers from the CD-ROM or in a directory containing the Registrationprocess.dll

**Customer Care Center – Consumer Accounts**

10475 Crosspoint Blvd.  
Indianapolis, IN 46256  
USA



**STEP-BY-STEP INSTALLATION**

- \* **This installation process mirrors installation on a NIST MSSearch program**

**Step 1.** A **Registration Code** will accompany the packaging provided with your disc. If your provided code does not work or your disc is not accompanied by a Registration Code, alert Wiley customer service at <http://support.wiley.com>

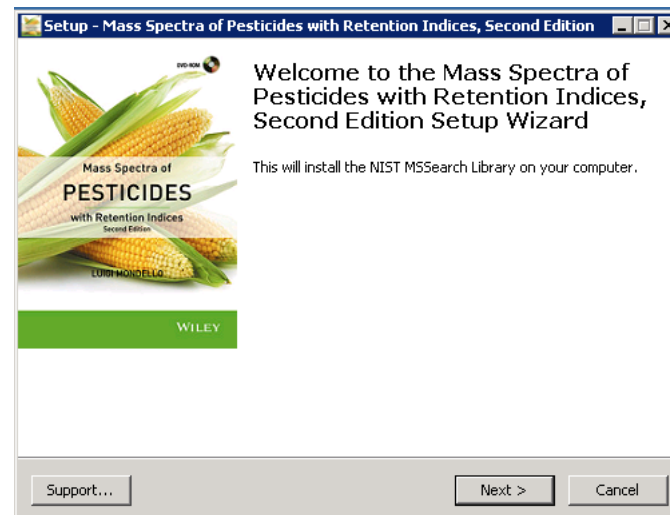
You will be unable to install this library without a Registration Code.

Carefully read the End User License Agreement contained on the disc or the accompanying packaging before using and/or installing this product.

**Step 2.** Enter the disc for installation. One file, "installation.htm" is included on the disc to simplify installation by using your Web browser. Choose the format(s) you wish to install. Choosing to run the installer will bring you to a set-up wizard splash screen. Choose "next".

Your license entitles you to install the library on **one** (1) machine. Please note that the installation files are unsigned – so a warning may be displayed in Windows, press run and proceed to the installation. Repeat this process for all of the formats you wish to install on the one computer.

**N.B.:** Install your chromatography data software prior to installing the format(s) you wish to install.

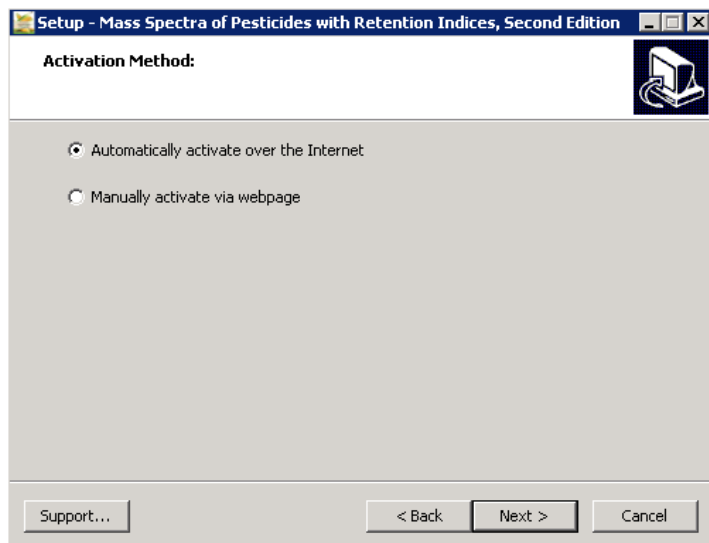
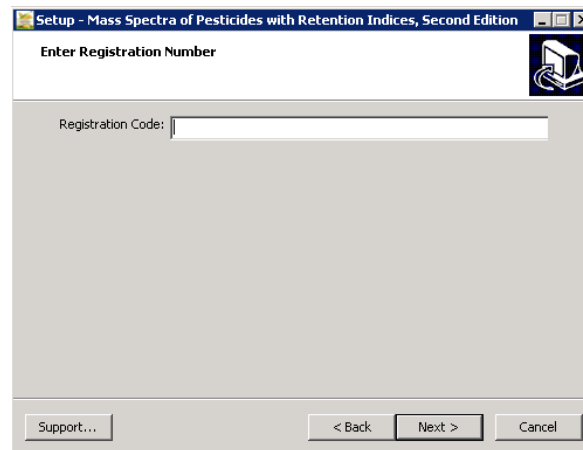


**Step 3. Registration Code and Machine ID**

Your Registration Code appears on the Certificate of Authenticity accompanying your packaging.

Enter the Registration Code exactly as it appears to begin the installation and press "Next". If the code is incorrect, an error screen will appear.

If the Registration Code is correct, you will be brought to the Activation screen. If your machine has Internet connectivity, choose to "automatically activate over the Internet" then click next.



**Step 4.** If you choose to manually activate, The Registration Code and the Machine ID will be automatically filled in. You may either double click the Web address to copy it to your computer's clipboard and paste it in a Web browser, or enter the URL as listed in your Web browser.

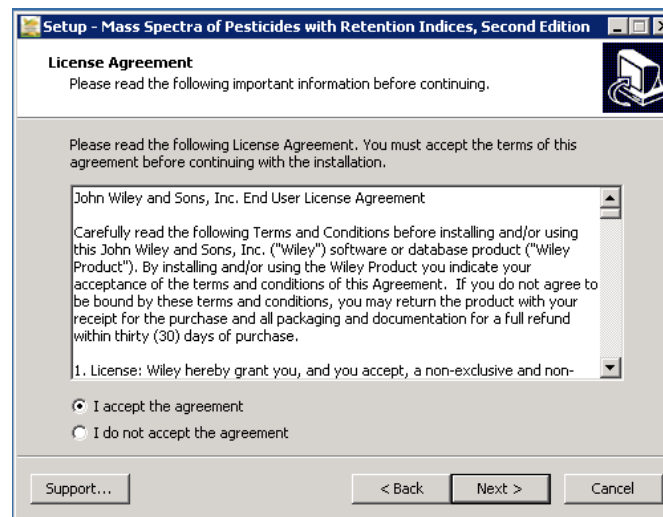
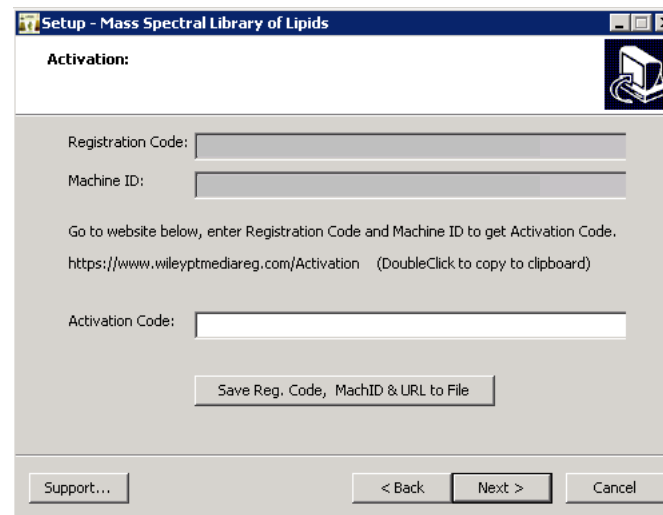
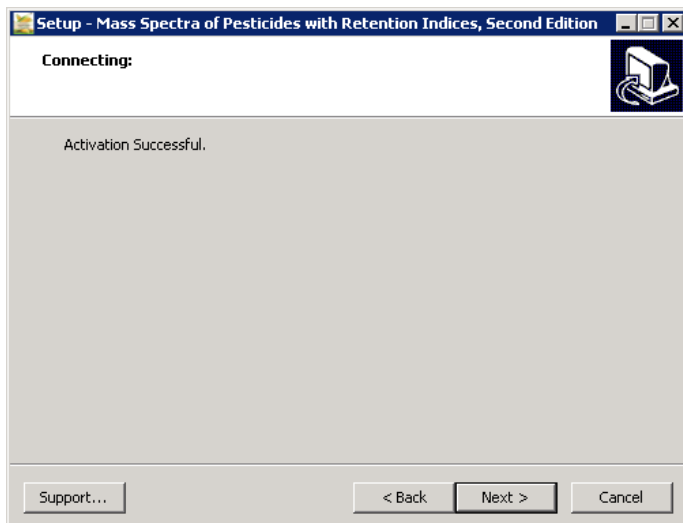
Alternatively you may save the Registration Code, Machine ID and URL to a text file that will be saved to the root directory.

In the Web browser, enter the Registration Code and the Machine ID. The next screen will provide the Activation Code. Copy this Code down and save it, entering into Activation screen on the computer that you are installing the spectral library on.

**Step 5.** Once your activation is successful, proceed by pressing "Next".

The next screen contains the End User License Agreement (17).

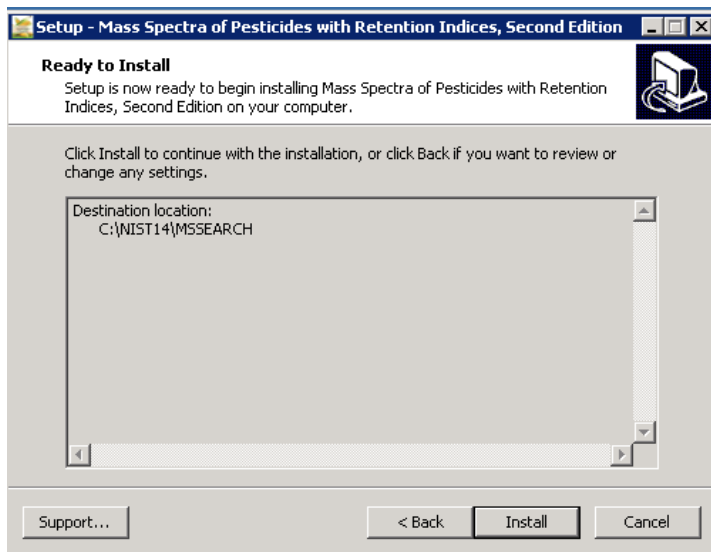
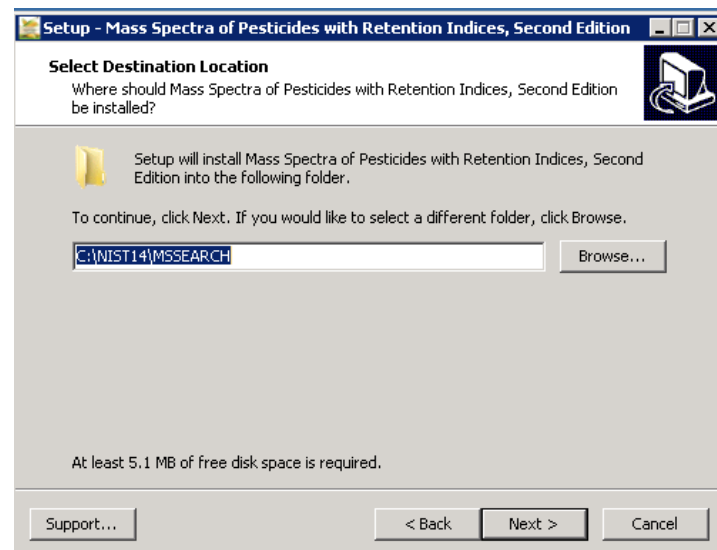
Read the agreement carefully and select the radio button labeled "I accept the agreement." T, choose "Next" to proceed to install the library. Spectral libraries should only be used by qualified individuals who meet the requirements outlined in the Agreement.



**Step 6.** At this point, the installer will unpack and install the library in the format you have selected.

Confirm the target directory and destination location and choose “Next.”

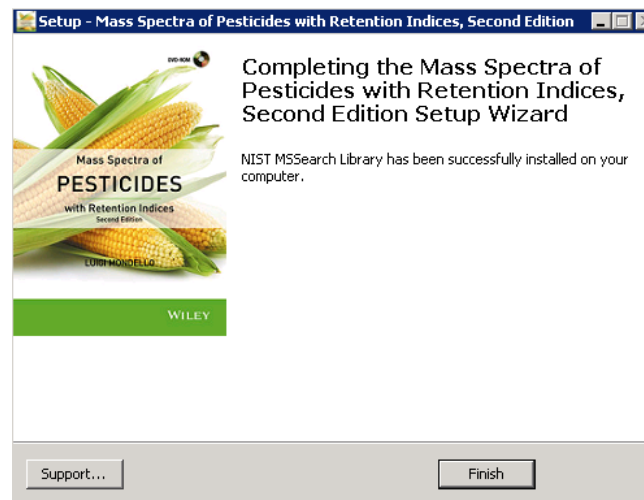
**Step 7.** Ready to install? After selection of the destination folder, click the install button to begin installation. Allow installation to finish before closing out any applications.



**Step 8.** Once installation is complete, press finish. Be sure to consult your mass spectrometry software's instructions for connecting to new libraries – some are automatic, but some require manual connection within the software.

### Repairing or Uninstalling

Repairing or uninstalling the library should be managed using the "Add/Remove Programs" utility in Windows. If the library is manually moved, removed, or installed using overwrite mode, the Windows utility may not work.



## GETTING HELP

Getting Help – you can choose 1) to go to:

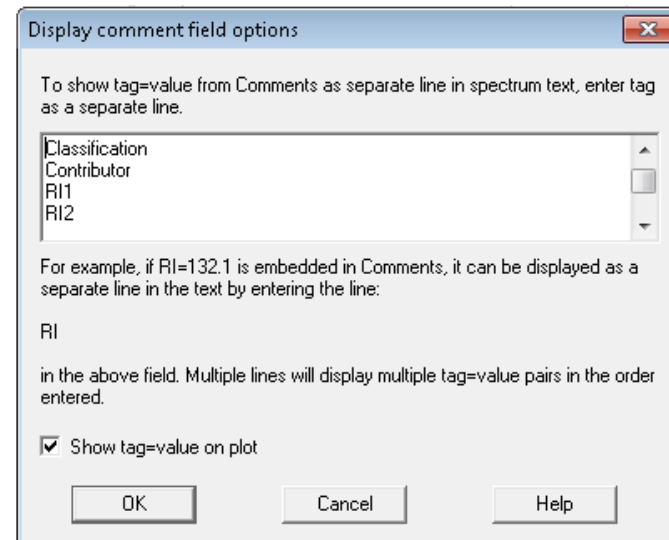
<http://support.wiley.com>

## SEARCH TIPS

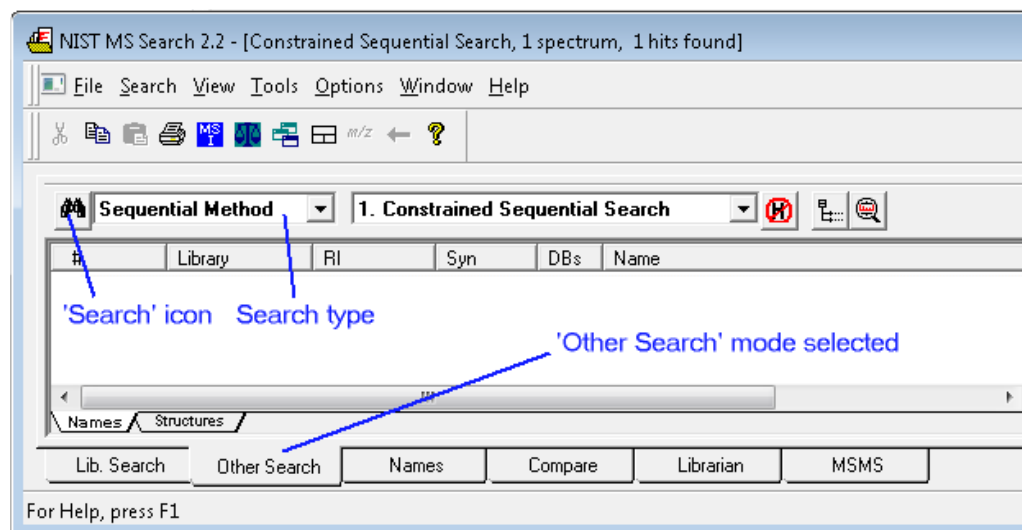
For some fields there is no field in the NIST MSSearch library format. For specifying additional fields to hold this data, the 'Tags in Comment' field option has been used. For displaying the data as separate data fields, select the Comment field options dialog, as seen here, available from the main menu bar's View item.

Available 'special' fields for the LM\_PESTICIDES library are:

- Classification
- Contributor
- WileyID
- RI 1 and 2
- SampleInfo

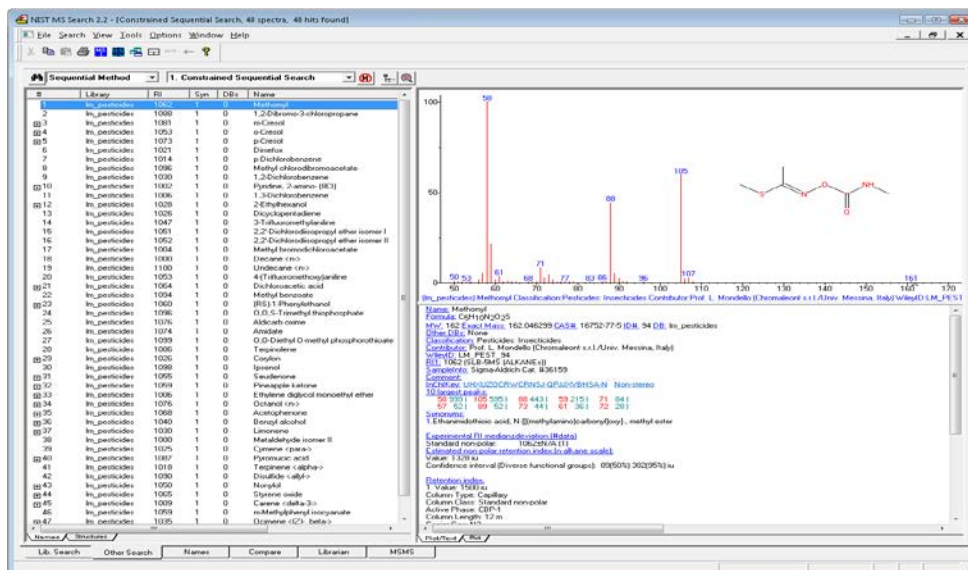


\*\* These special 'Tags in Comment' fields could be used for searching the same way as 'hard-wired' data fields. Select the 'Other Search' tab, then 'Sequential Search' and click the Search icon. Clicking the 'Search' icon brings up a dialog window where you could specify your query.



## GENERAL DATABASE CONTENT

Seen in the example below is a constrained sequential search for Retention Index values being exactly 1000 from the RI1 data field as well as a range search (RI1 being between 1000 and 1100). Additional search options like greater or less than as well as range searches are available for numerical values. For text searching it is also possible to define exact, substring or exclusions.



See [www.wiley.com/go/databases](http://www.wiley.com/go/databases) for other mass spectrometry, NMR, IR, and enterprise spectroscopy software from Wiley-VCH and John Wiley and Sons, Inc.

## BASIC FUNCTIONS

The enclosed library can be used as the primary search library or can be searched along with other libraries. We recommend, for mission-critical tasks, that users consult both a general library such as *Wiley Registry of Mass Spectral Data 11th Edition* and a specialized library such as the featured library, *Mass Spectra of Pesticides with Retention Indices 2<sup>nd</sup> Edition*, or *Mass Spectra of Flavors and Fragrances of Natural and Synthetic Compounds 3rd Edition*.

## DATA SUBMISSION

Wiley welcomes submissions of new data for consideration for inclusion in forthcoming editions.

Wiley accepts data in the following areas:

- ClassicalEI-MS
- Tandem MS ( $MS^n$ )
- MS-TOF exact mass
- C-NMR, H-NMR, P-NMR, Si-NMR, X-NMR
- FT-IR, Raman, UV-Vis, Near-Infrared, Diamond-ATR

Data proposals, sample data, or inquiries are best sent to [dbinquiry@wiley.com](mailto:dbinquiry@wiley.com)

You might send the original TIC file (Xcalibur (\*.raw), ChemStation (DATA.MS)) by an e-mail attachment directly to: [dbinquiry@wiley.com](mailto:dbinquiry@wiley.com). The data will be evaluated. If you have questions or if you need assistance please contact us. We are always willing to help.



**JOHN WILEY AND SONS, INC. END USER LICENSE AGREEMENT**

Carefully read the following Terms and Conditions before installing and/or using this John Wiley and Sons, Inc. ("Wiley") software or database product ("Wiley Product"). By installing and/or using the Wiley Product you indicate your acceptance of the terms and conditions of this Agreement. If you do not agree to be bound by these terms and conditions, you may return the product with your receipt for the purchase and all packaging and documentation for a full refund within thirty (30) days of purchase.

1. License: Wiley hereby grant you, and you accept, a non-exclusive and non-transferable license, to use the Wiley Product.
2. Term: This License Agreement is effective until terminated. You may terminate it at any time by destroying the Wiley Product.
3. Authorized use of Wiley Product: This License allows you to install and use the Wiley Product on a single computer at a time. You may make one copy of the Wiley Product in machine-readable form for backup purposes only. The backup copy must include all copyright information contained on the original. You may selectively download and print limited content of the Wiley Product for your personal non-commercial use, provided, however that any such portions of the Wiley Product downloaded or printed will continue to be subject to the terms and conditions of this License, and you acknowledge that any copy, or portion printed is protected by U.S. copyright law. Upon termination of this License, you agree to destroy all copies in any form. IF YOU TRANSFER POSSESSION OF ANY COPY OF THE WILEY PRODUCT TO ANOTHER PARTY, YOU MUST NOTIFY THEM OF THE TERMS OF THIS LICENSE.
4. Use Restrictions. You may not (a) Copy the WILEY PRODUCT, except to load it into a computer in accordance with Instructions set forth in the User's Manual; (b) Modify, adapt, translate, reverse engineer, decompile, disassemble, or create derivative works based on the Wiley Product; (c) Copy, download, store in a retrieval system, publish, transmit, or otherwise reproduce, transfer, store, disseminate, or use, in any form or by any means, any part of the data contained within the System except as expressly provided for in this License; (d) Resell, sublicense, lease, or grant any other rights of any kind to any individual copy of the System to any other person; (e) Remove any proprietary notices, labels or marks on the System. THE WILEY PRODUCT IS NOT INTENDED FOR USE IN THE OPERATION OF NUCLEAR FACILITIES IN WHICH CASE THE FAILURE OF THE WILEY PRODUCT COULD

LEAD TO DEATH, PERSONAL INJURY, OR SEVERE PHYSICAL OR ENVIRONMENTAL DAMAGE. Your rights under this License will terminate automatically without notice from Wiley if you fail to comply with any term(s) of this License

You shall take reasonable measures to maintain the security of the Wiley Product.

5. Proprietary Rights. You acknowledge and agree that the Wiley Product is the sole and exclusive property of Wiley and/or its Licensors, and the Product and User Manual are licensed to you only for the term of this License and strictly under the terms hereof. Wiley and/or its Licensors own or have obtained all right, titles, and interest in and to the content in the Wiley Product, and the Wiley Product contains copyrighted and confidential trade secret information that is the property of, or licensed by Wiley. Except for the limited rights given to you herein, all rights are reserved by Wiley and/or its Licensors.

6. Termination. If you should fail to perform in the manner required in this License, this License shall terminate and Wiley may exercise any rights it may have. Upon termination, Wiley may require that you destroy all of these materials and that you so certify, in writing to Wiley. All provisions of this license with regard to the protection of the proprietary rights of Wiley shall continue in force after such termination.

7. Warranties, Indemnities, and Limitation of Liability. THE WILEY PRODUCT IS PROVIDED "AS IS", WITHOUT WARRANTY OF ANY KIND, EXPRESS OR IMPLIED, INCLUDING BUT NOT LIMITED TO THE IMPLIED WARRANTIES OF MERCHANTABILITY OR FITNESS FOR A PARTICULAR PURPOSE. WILEY NEITHER GIVES NOR MAKES ANY OTHER WARRANTIES OR REPRESENTATIONS UNDER OR PURSUANT TO THIS LICENSE. Wiley does not warrant, guarantee or make any representations that the functions contained in the Wiley Product will meet your particular requirements or that the operation of the Wiley Product will be uninterrupted or error free. The entire risk as to the results and performance of the Wiley Software is assumed by you.

If the Wiley Product disc is defective in workmanship or materials and Wiley is given timely notice thereof, Wiley's sole and exclusive liability and your sole and exclusive remedy, shall be to replace the defective disc. In the event of a defect in a disc covered by this warranty, Wiley will replace the disc provided that you return the defective disc to Wiley together with a copy of your receipt. If Wiley is unable to provide a disc that is free from such defects, you may terminate this License by returning the disc and all associated documentation to Wiley for a full refund. The foregoing states

your sole remedy and Wiley's sole obligation in the event of the occurrence of a defect coming within the scope of the Limited Warranty.

IN NO EVENT SHALL WILEY, ITS SUPPLIERS, OR ANYONE ELSE WHO HAS BEEN INVOLVED IN THE CREATION, PRODUCTION OR DELIVERY OF THE WILEY PRODUCT OR DOCUMENTATION BE LIABLE FOR ANY LOSS OR INACCURACY OF DATA OF ANY KIND OR FOR LOST PROFITS, LOST SAVINGS, OR ANY DIRECT, INDIRECT, SPECIAL, CONSEQUENTIAL OR INCIDENTAL DAMAGES ARISING OUT OF OR RELATED IN ANY WAY TO THE USE OR INABILITY TO USE THE PRODUCT, EVEN IF WILEY OR ITS SUPPLIERS HAVE BEEN ADVISED OF THE POSSIBILITY OF SUCH DAMAGES. THIS LIMITATION OF LIABILITY SHALL APPLY TO ANY CLAIM OR CAUSE WHATSOEVER WHETHER SUCH CLAIM OR CAUSE IS IN CONTRACT, TORT OR OTHERWISE.

The limited warranty set forth above is in lieu of all other express warranties, whether oral or written. The agents, employees and distributors of Wiley are not authorized to modify this warranty, nor to make additional warranties binding on Wiley. Accordingly, additional statements such as distributor representations, whether written or oral, do not constitute warranties of Wiley and should not be relied upon as a warranty of Wiley. In no case shall Wiley's liability exceed the cost of the Wiley Product. You agree to indemnify and hold Wiley, its suppliers, and all of their officers, directors, employees and agents, as well all those individuals or organizations providing information for the Wiley Product, harmless from any and all claims of third parties resulting from or incidental to your use or operation of the Wiley Product, or arising from any breach by you of any provisions of this License. Wiley may, at its option, institute or defend any action arising out of the aforesaid clauses with counsel of its own choice.

(Some states do not allow exclusions or limitations of implied warranties or liability in certain cases, so the above exclusions and limitations may not apply to you.)

8. Export Law Assurances. You may not use or otherwise export or re-export the Wiley Product except as authorized by United States law and the laws of the jurisdiction in which the Wiley Product was obtained. In particular, but without limitation, the Wiley Product may not be exported or re-exported (i) into (or to a national or resident of) any U.S. embargoed country or (ii) to anyone on the U.S. Treasury Department's list of Specially Designated Nationals or the U.S. Department of Commerce's Table of Denial Orders. By using the Wiley Product, you represent and warrant that you are not located in, under control of, or a national or resident of any such country or on any such list.

9. General.

- (a) This License shall be governed by the laws of the State of New York in so far as they do not conflict with U.S. Federal regulations.
- (b) If any provision of this License is deemed to be unlawful, invalid, or unenforceable, the remaining provisions shall remain in full force and effect as if the unlawful, invalid, or unenforceable provision had been omitted.
- (c) Any legal action, suit, or proceeding arising out of or relating to this License or the breach thereof shall be instituted in a court of competent jurisdiction in New York County in the State of New York and each party hereby consents and submits to the personal jurisdiction of such court and consents to service of process by registered or certified mail, return receipt requested, at the last known address of such party.
- (d) The above warranties and indemnities shall survive the termination of this License.
- (e) Use, duplication, or disclosure by the U.S. Government is subject to restrictions stated in regulation 48-DFARS 252.227-7013(c)(1)(ii). Software licensors: John Wiley & Sons, Inc., 111 River Street, Hoboken, N.J. 07060.

10. Acknowledgment. YOU ACKNOWLEDGE THAT YOU HAVE READ THIS LICENSE, UNDERSTAND IT, AND AGREE TO BE BOUND BY ITS TERMS AND CONDITIONS. YOU ALSO ACKNOWLEDGE THAT THIS LICENSE IS THE COMPLETE AND EXCLUSIVE STATEMENT OF THE AGREEMENT BETWEEN WILEY AND YOU, AND THAT IT SUPERSEDES ANY PROPOSAL, PRIOR AGREEMENT, OR OTHER COMMUNICATIONS, WHETHER ORAL OR WRITTEN, BETWEEN YOU AND WILEY RELATING TO THE SUBJECT MATTER OF THIS LICENSE. THIS LICENSE CANNOT BE MODIFIED OR AMENDED EXCEPT BY A FURTHER WRITTEN INSTRUMENT EXECUTED BY YOU AND WILEY.