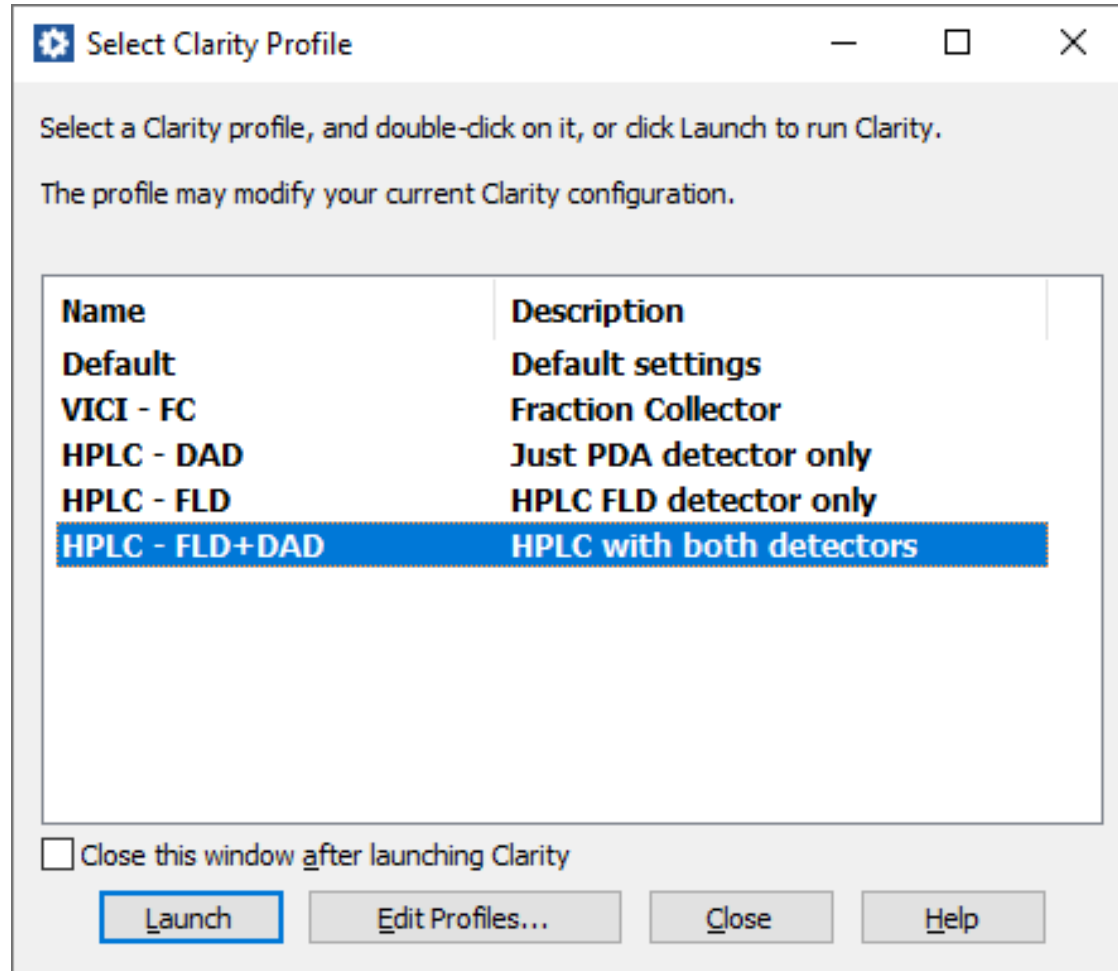




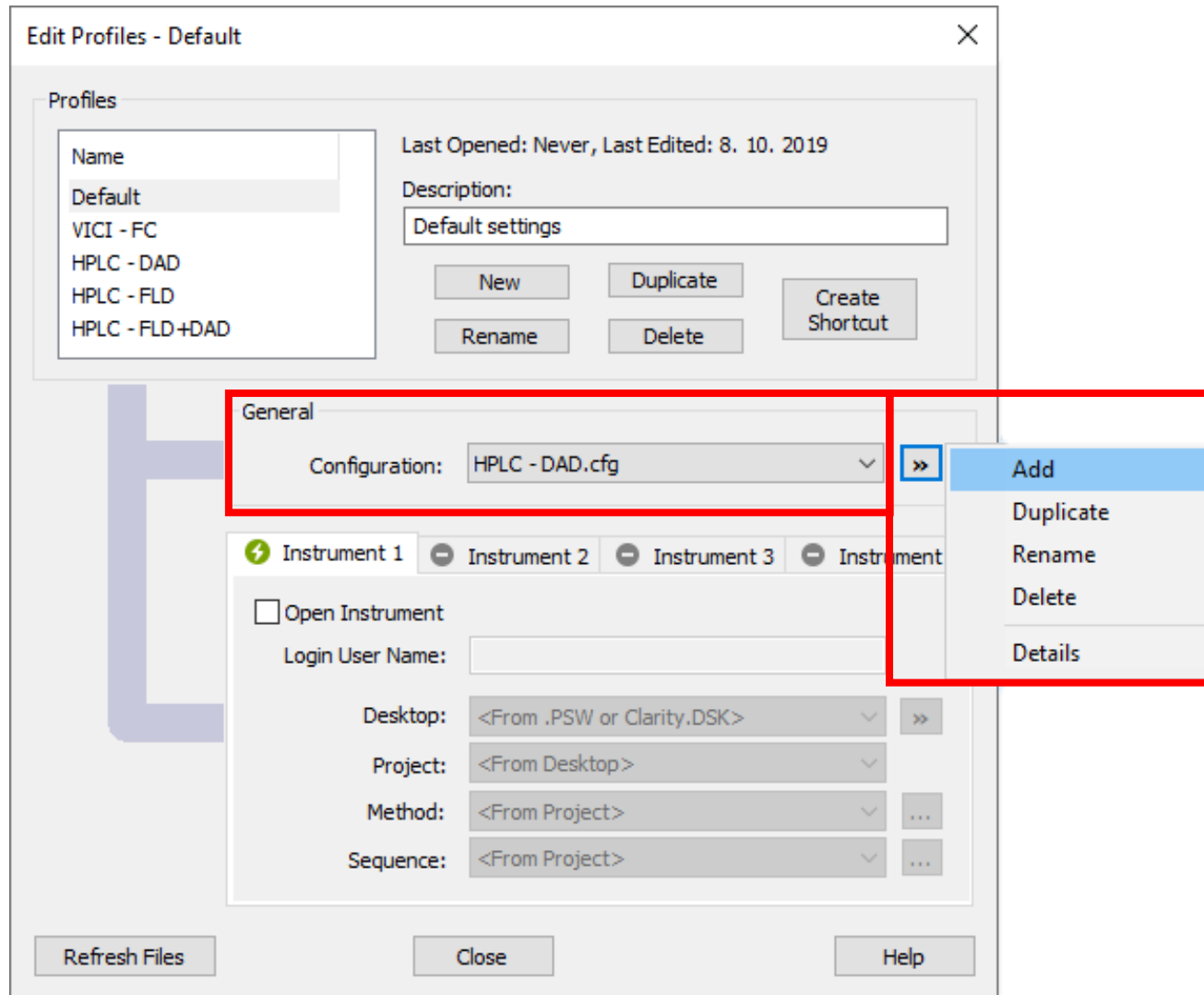
LAUNCH MANAGER

VARIABLE CONFIGURATION

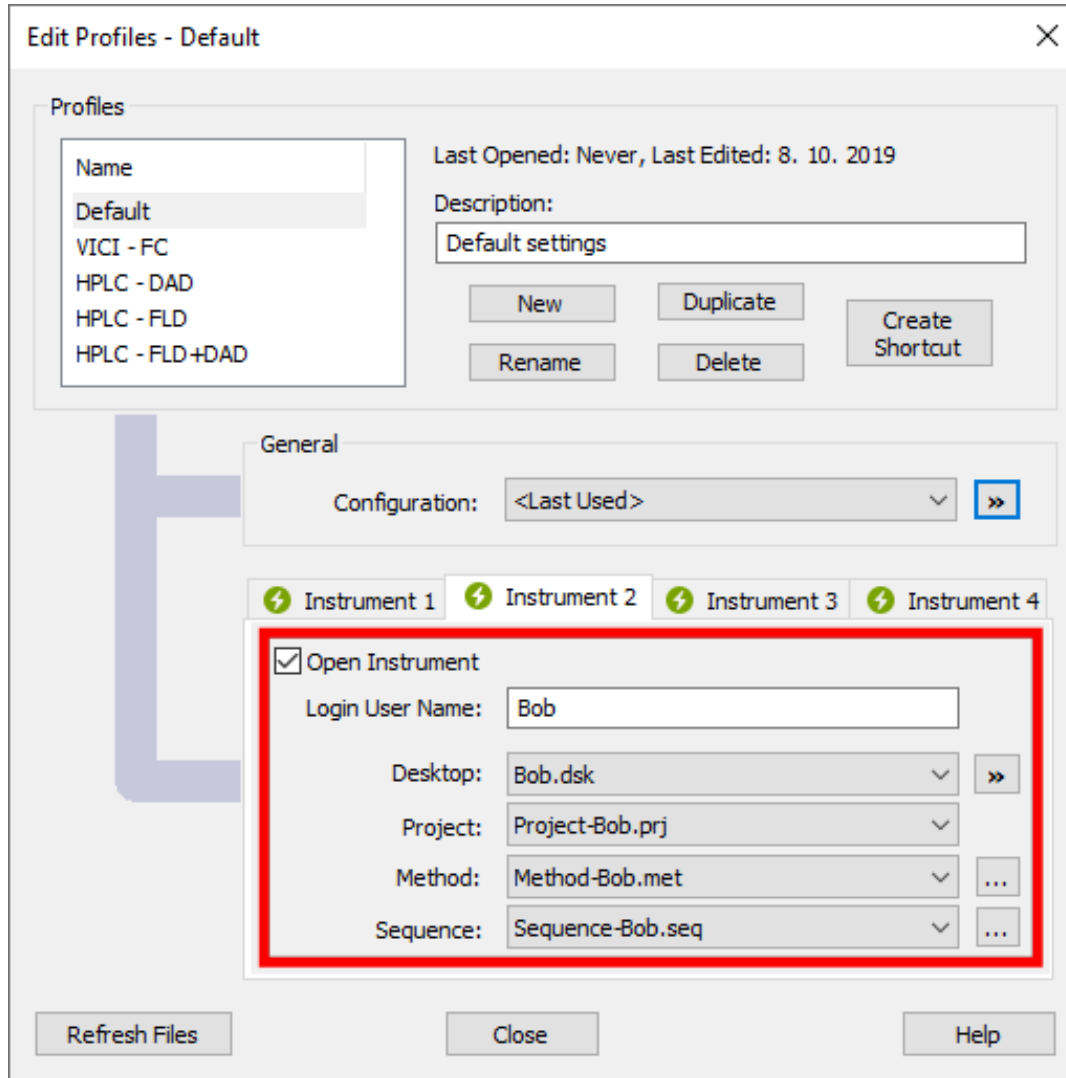
P020/80B 04/2020



- **External utility** available in Clarity
- Enables to use Clarity with **different hardware configurations**
- Available in Windows Start Menu Clarity Folder
- Could be started by **LaunchManager.exe** Clarity \Cfg\ subfolder
- Settings stored in dedicated file (... \Cfg\Profiles.ini)



- Enables to **maintain multiple configuration files** (*.cfg)
- The configuration could be **modified from Clarity System Configuration** dialog only
- Agilent/Hitachi HPLC system with multiple detectors using only one or both
- Advanced autosamplers (HTA, CTC) – switching between LC, GC, ,liquid' ,headspace' modes



- Enables to open Clarity Instrument with **predefined variable presets** – desktop, project, method and sequence
- Clarity can be already running when opening Instrument with different settings (desktop, project, method, sequence)
- Using specific configuration file (*.cfg) requires entire Clarity station restart



...THANK YOU FOR YOUR TIME



SUPPORT@DATAAPEX.COM
WWW.DATAAPEX.COM