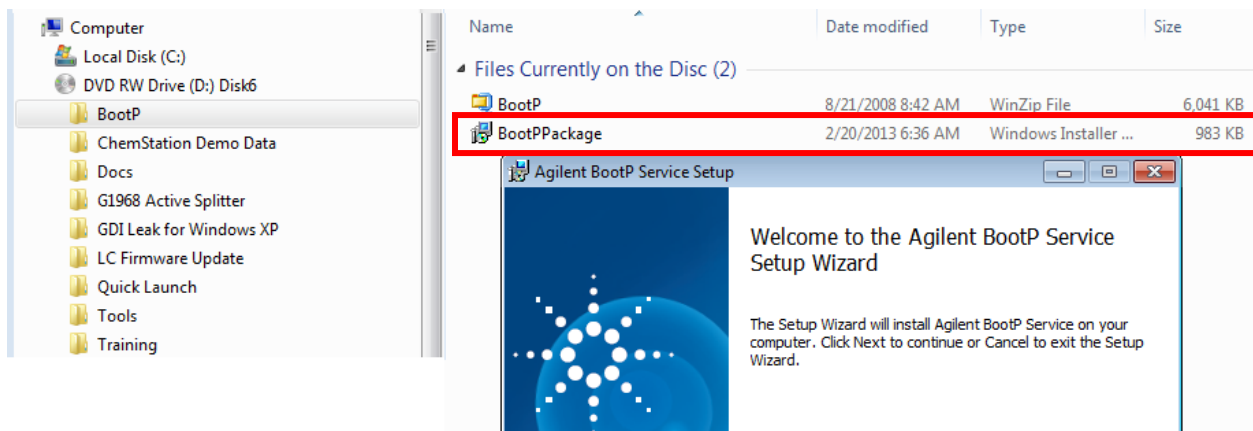


Installing and Using the BootP Service from OpenLAB Support and Utilities Disc

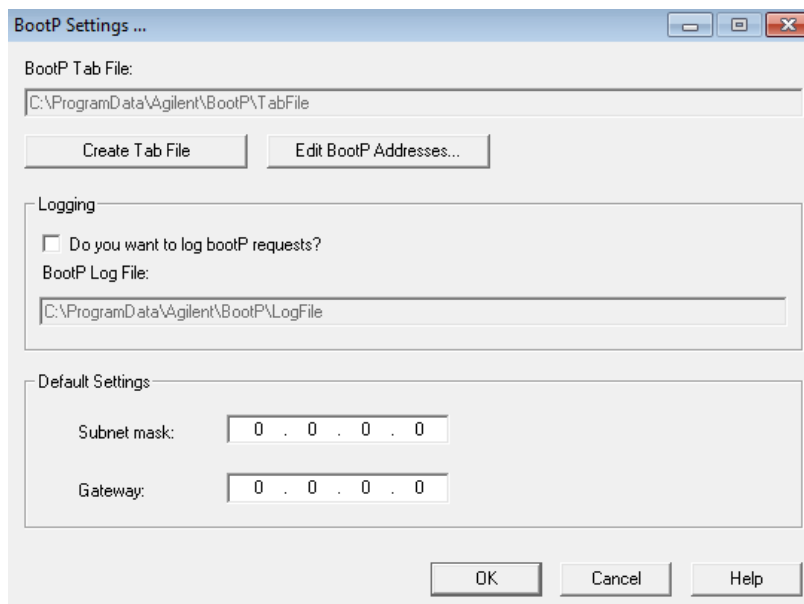
BootP Installation

The BootP Service is provided with the OpenLAB CDS Chemstation **Support and Utilities Disc**
Install by running “**BootP\BootPPackage**”



Follow all of the Installation Screens accepting default parameters

When the Installation is complete you will see this screen....



NOTES:

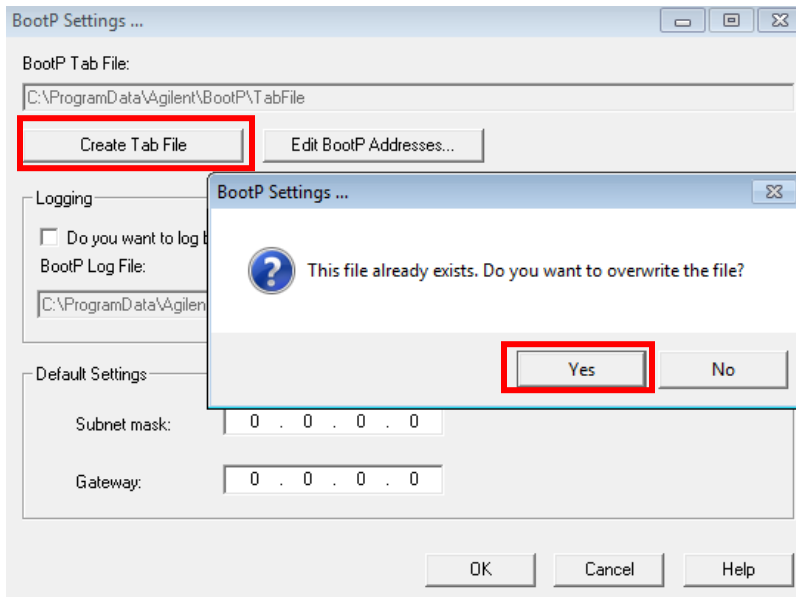
- The BootP Service is not “Started” yet
- Make selections for “Logging BootP Requests” and “Default settings” before Creating the “Tab File” – if these are changed you must re-Create the Tab File
- The Directory **C:\Program Data\Agilent\BootP** is a hidden directory in Windows 7 to see it you must set “**Folder Options**” to “**Show Hidden Files**”

Create a BootP Tab File

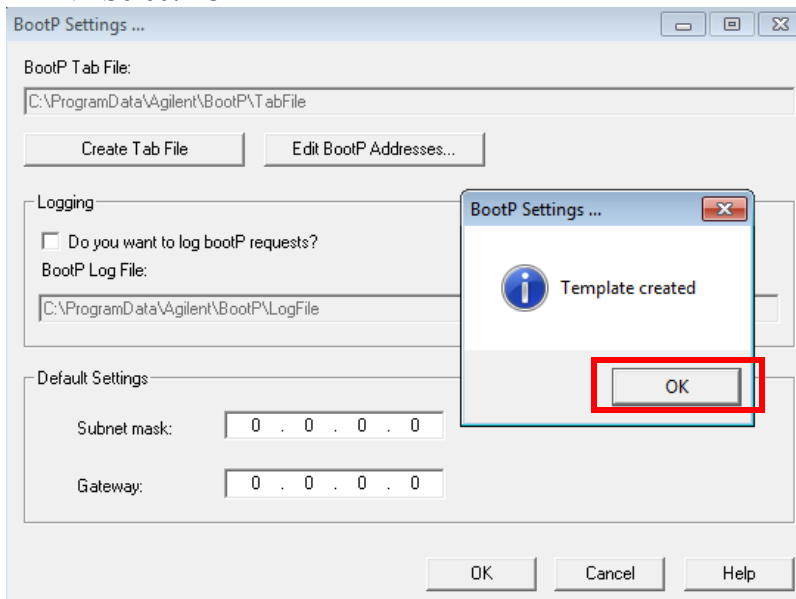
This procedure **does not use “Logging BootP Requests”** – the **Jet Direct Card MAC address** must be read off of the card and **entered manually** into the “**Add BootP Entry**” Table.

The procedure for “Logging BootP Requests” is at the end of the document.

1. Select “**Create Tab File**” – answer “**YES**” to overwrite - **Very Important**

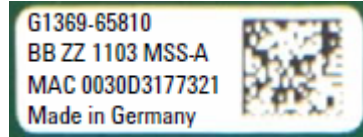


2. Select “OK”



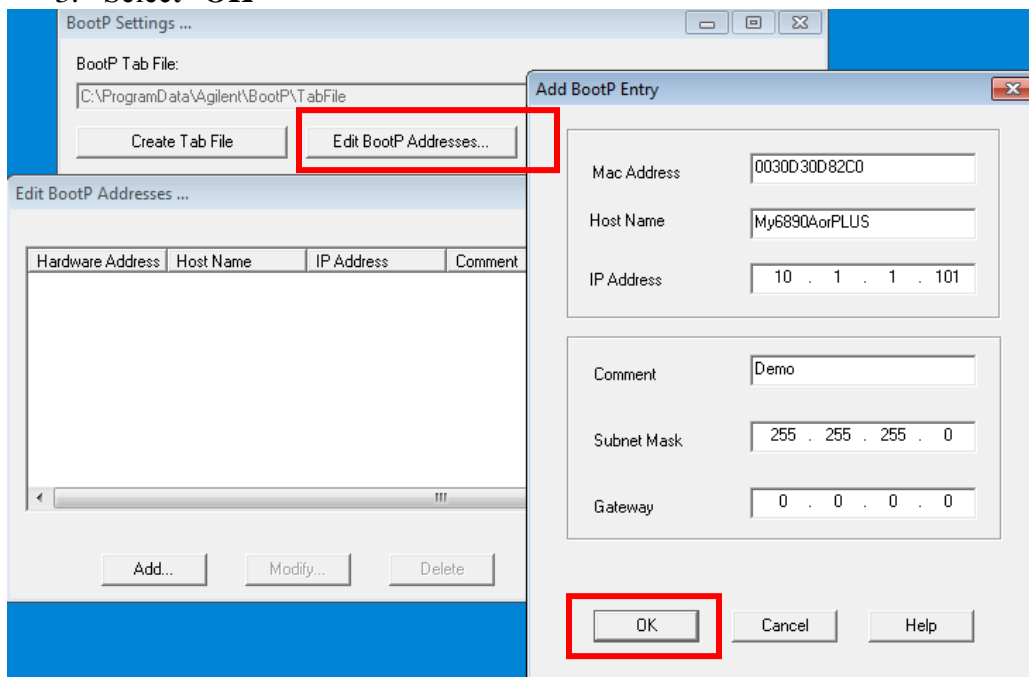
Create a BootP Entry for your Instrument Jet Direct Card

1. Select “Edit BootP Addresses”
2. Read the MAC address from your Jet Direct Card and enter it into the table – ACCURATELY!



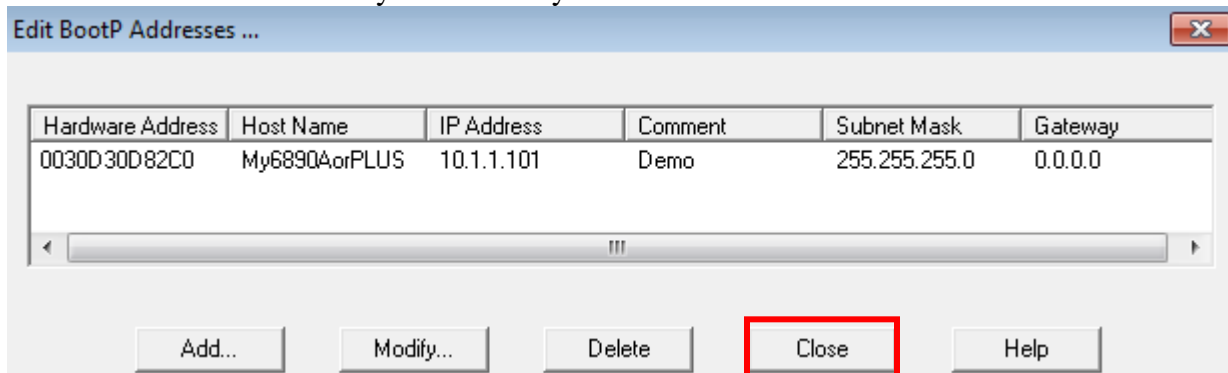
(To get the MAC address from the BootP “Logfile”, refer to the next Procedure)

1. Enter a **Host Name** – **required field** - it must start with an “Alpha” character.
2. Enter the **IP Address, Subnet Mask and Gateway** as required
3. Select “OK”



(BootP Service has still not been “Started”)

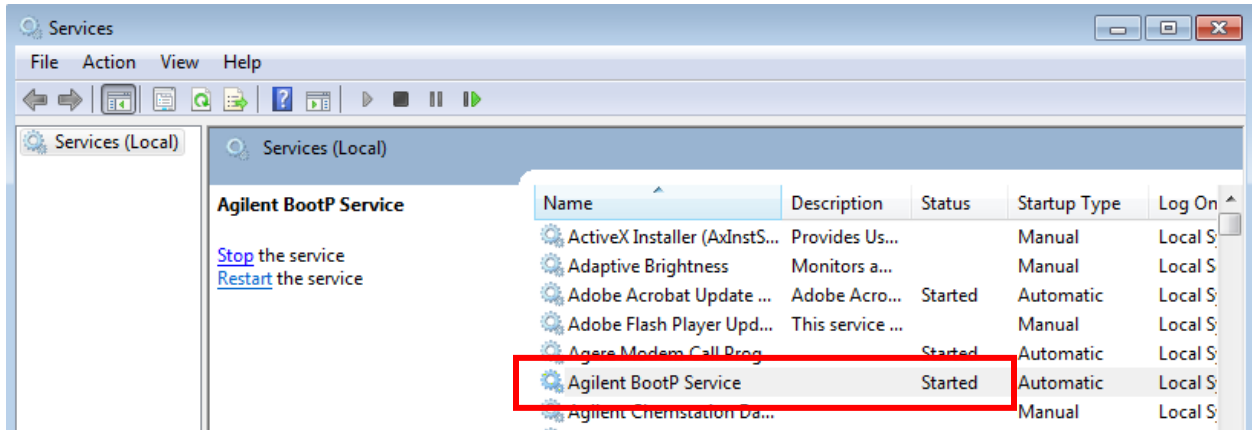
4. Check the Table Entry for Accuracy



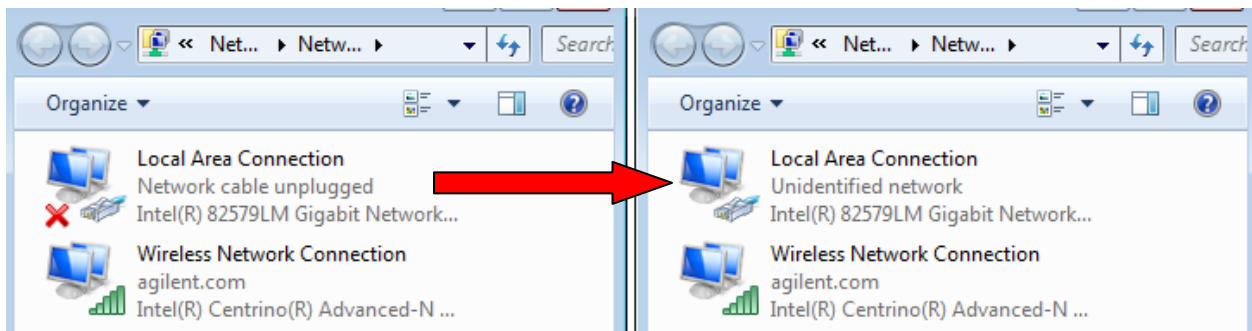
5. Select “Close” then “OK” to Close and save “BootP Settings”

Using BootP to set the Instrument IP Address

1. Start the BootP Service from PC “Services” (Or Re-boot the PC)



2. Confirm correct Jet Direct Card configuration switches for BootP configuration.
3. Connect the Instrument Jet Direct Card to the PC with a Crossover Cable (or Network)
4. Set the PC “TCP/IP” properties to appropriate IP Address, Subnet Mask etc.
5. Turn on the Instrument and confirm network hardware connection.



Once the Instrument Self-Test is completed, the Jet direct card “broadcasts” the MAC address. The PC running BootP receives it and checks the “Tab file” for a match. If the MAC address matches, BootP will issue the IP settings back to the Jet Direct Card.

6. Confirm by running “PING” from the DOS Command Prompt

```
C:\windows\system32\cmd.exe

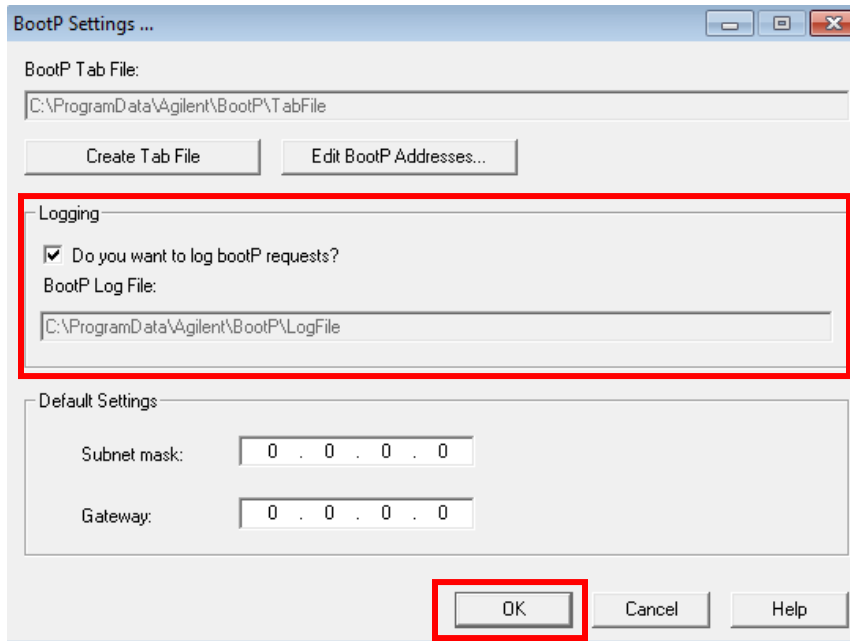
C:\Users\lfs-parkd>ping 10.1.1.101

Pinging 10.1.1.101 with 32 bytes of data:
Reply from 10.1.1.101: bytes=32 time=1ms TTL=64
Reply from 10.1.1.101: bytes=32 time=1ms TTL=64
Reply from 10.1.1.101: bytes=32 time=1ms TTL=64
Reply from 10.1.1.101: bytes=32 time=1ms TTL=64

Ping statistics for 10.1.1.101:
    Packets: Sent = 4, Received = 4, Lost = 0 (0% loss),
    Approximate round trip times in milli-seconds:
        Minimum = 1ms, Maximum = 1ms, Average = 1ms
```

Using the “BootP Logfile” to get the Jet Direct MAC address

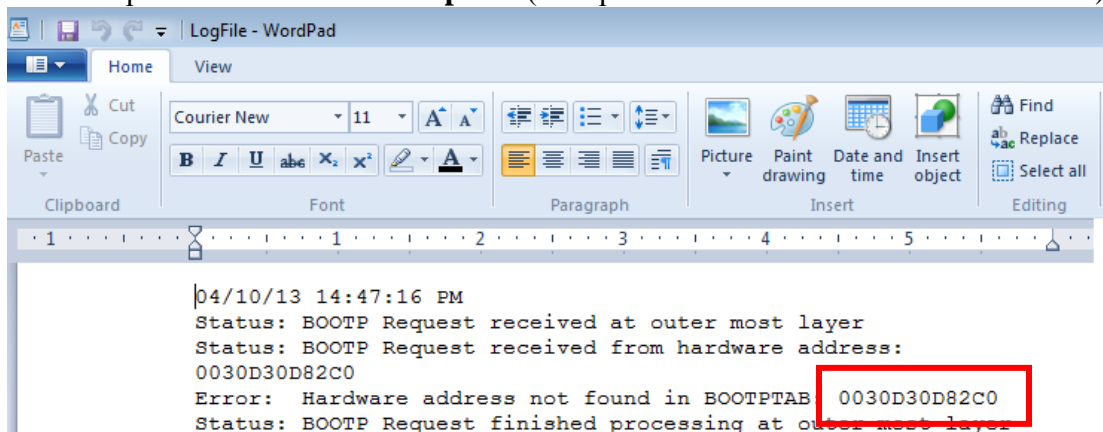
1. Stop the BootP Service from the PC “Services”
2. Open “**Edit BootP Settings**”
3. **Select Logging:** “Do you want to log BootP requests”
4. Select “**OK**”



5. Select “**Create Tab File**” and **Overwrite** the old Tab File
6. Select “**OK**”
7. Restart the BootP Service
8. Power on the Instrument – Complete the Self Test
9. Navigate to the BootP “Logfile” – **C:\ProgramData\Agilent\BootP\Logfile**

NOTE: this is a hidden directory to see it you must set “**Folder Options**” to “**Show Hidden Files**”

10. Open the File with “**Wordpad**”. (Notepad doesn’t show individual line-feeds)



The **MAC address is in the BootP Entry**

NOTE: When complete **turn off logging** in “BootP Settings” to prevent the logfile from getting “**HUGE**” - especially if the PC is on a Site Network connection.