

# IC Application Note No. C-126

**Title:** Methylamines and ethanolamines (Metrosep C 4 – 150)

**Summary:** Determination of monomethylamine (MMA), dimethylamine (DMA), trimethylamine (TMA), monoethanolamine (MEA), diethanolamine (DEA) and triethanolamine (TEA) using cation chromatography with direct conductivity detection.

**Sample:** Standard solution

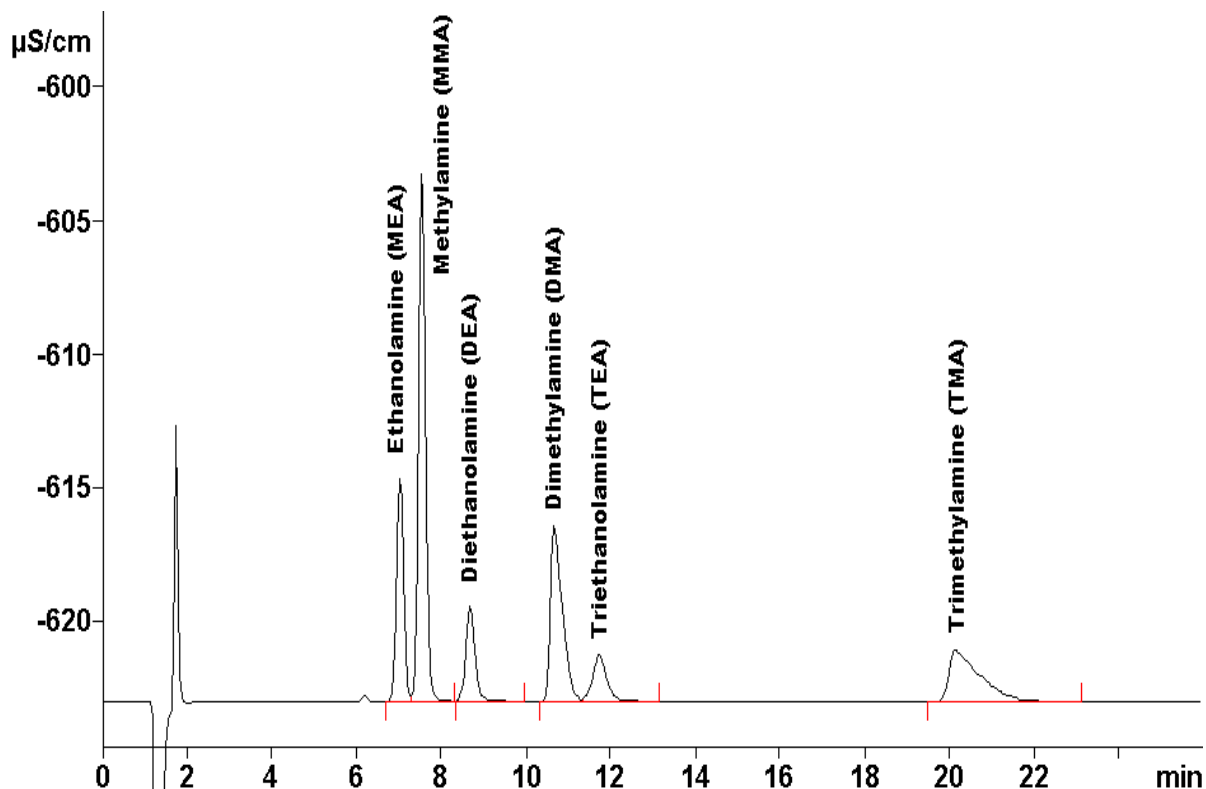
**Sample Preparation:** Acidification with 1  $\mu\text{L/mL}$  of 2 mmol/L nitric acid

**Column:** 6.1050.420 Metrosep C 4 – 150

**Eluent:** 1.7 mmol/L nitric acid  
0.7 mmol/L dipicolinic acid

**Flow:** 0.9 mL/min

**Injection Volume:** 20  $\mu\text{L}$



<b>Results:</b>	MEA mg/L	MMA mg/L	DEA mg/L	DMA mg/L	TEA mg/L	TMA mg/L
	<b>20</b>	<b>20</b>	<b>20</b>	<b>20</b>	<b>20</b>	<b>20</b>