

IC Application Note No. C-108

Title: Methylamine besides the standard cations on the Metrosep C 3 – 250 cation column

Summary: Determination of methylamine besides sodium, ammonium, potassium, magnesium and calcium using cation chromatography with direct conductivity detection.

Sample: Standard solution

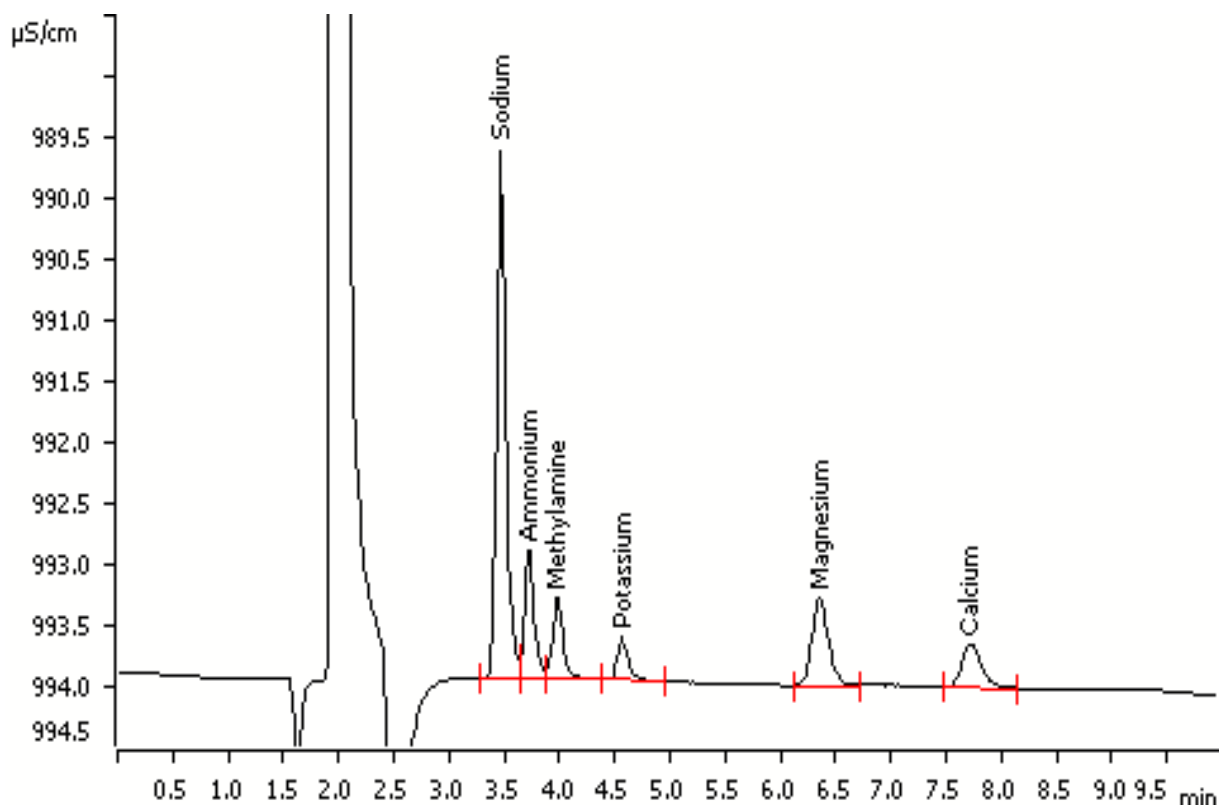
Sample Preparation: None

Column: 6.1010.430 Metrosep C 3 – 250

Eluent: 5 mmol/L nitric acid
10% acetone

Flow: 1.0 mL/min

Injection Volume: 10 μ L



Results:	Sodium mg/L	Ammonium mg/L	Methylamine mg/L	Potassium mg/L	Magnesium mg/L	Calcium mg/L
	5	1	1	1	1	1