



Solvents

Application Note

Materials Testing & Research

Authors

Agilent Technologies, Inc.

Introduction

Gas chromatography with an Agilent CP-Select 624 CB column separates five solvents in 18 minutes.



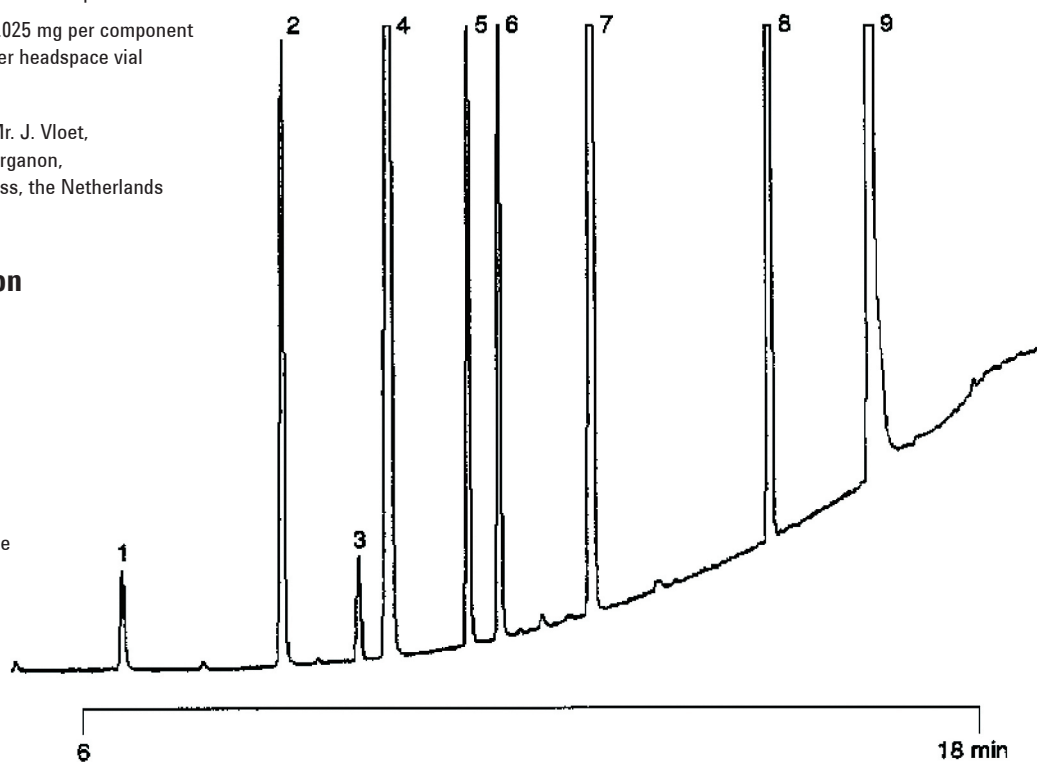
Agilent Technologies

Conditions

Technique : GC-capillary
Column : Agilent CP-Select 624 CB, 0.32 mm x 60 m, fused silica WCOT CP-Select 624 CB (df = 1.8 µm) (Part no. CP7415)
Temperature : 50 °C (8 min) → 250 °C, 20 °C /min; 250 °C (5 min)
Carrier Gas : He, 130 kPa (1.3 bar, 19 psi)
Injector : Split, 20 mL/min
T = 140 °C
Detector : FID
T = 280 °C
Sample Size : 1 mL headspace
Concentration Range : 0.025 mg per component per headspace vial
Courtesy : Mr. J. Vloet,
Organon,
Oss, the Netherlands

Peak identification

1. ethanol
2. dichloromethane
3. impurity
4. diisopropyl ether
5. ethyl acetate
6. tetrahydrofuran
7. heptane
8. toluene
9. N,N-dimethylformamide



www.agilent.com/chem

This information is subject to change without notice.

© Agilent Technologies, Inc. 2011

Printed in the USA

31 October, 2011

First published prior to 11 May, 2010

A01286



Agilent Technologies