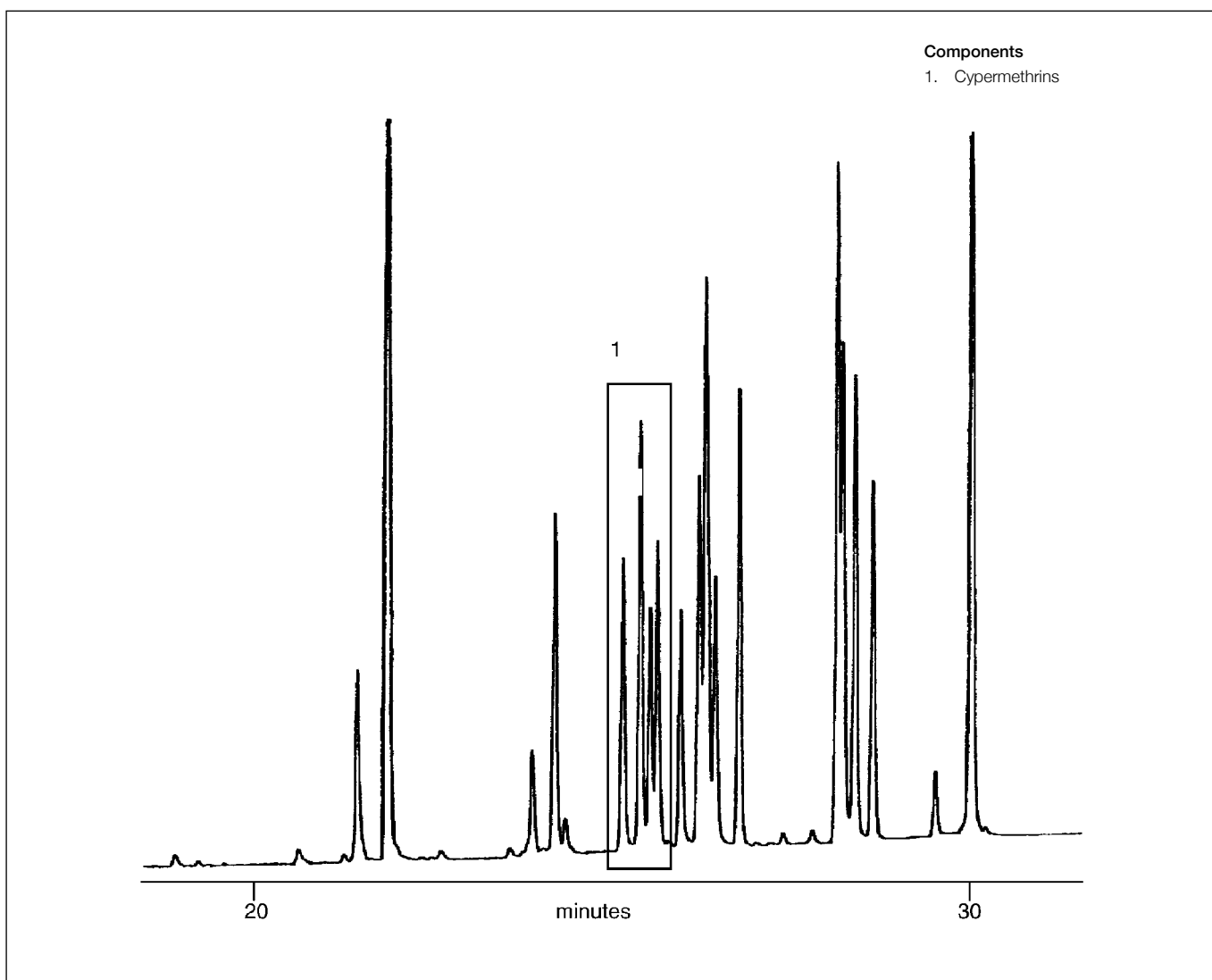


Analysis of cypermethrin pyrethroid

BPX5

Column part number	054113		
Phase	BPX5	Final temperature	300°C, 10 min
Column	25 m x 0.22 mm x 0.25 µm	Carrier gas	He, 20 psi (185 kPa)
Initial temperature	60°C, 1 min	Injection mode	Splitless, 0.5 µL
Rate 1	40°C/min to 200°C	Injection temperature	300°C
Rate 2	4°C/min to 300°C	Detector	ECD, 300°C


 For more information visit www.trajanscimed.com or contact techsupport@trajanscimed.com