

# Demonstration of Collision Cross Section (CCS) Value Conservation Across LC and GC Analyses

Lauren Mullin, Gareth Cleland, and Mike McCullagh

## GOAL

To demonstrate the conservation of CCS values for 73 pesticides introduced under both GC and LC conditions.

## BACKGROUND

Contaminant identification in food and environmental matrices using both GC and LC-MS techniques are widely implemented, although challenges with matrix effects, false detections, and reproducibility of ion ratios exist. In this technology brief we demonstrate the application of travelling wave ion mobility spectrometry (TW-IMS) coupled to a quadrupole time-of-flight (QToF) MS to generate a robust and unique additional identification point for contaminant analysis. The determination of a collision cross section (CCS) of an ion can be extrapolated from the observed drift time as the ion passes through the drift cell. To demonstrate the robust and precise nature of CCS values, a suite of pesticides were analyzed under both GC and LC conditions, and the CCS values obtained compared.

## THE SOLUTION

A comparison of 73 GC and LC amenable pesticides that had been injected as solvent standards five times each during both the LC and GC analyses found CCS values that were strongly correlated to one another (Figure 1).

CCS values are robust and precise values associated with physical properties of an ion, and are conserved regardless of chromatographic technique implemented.

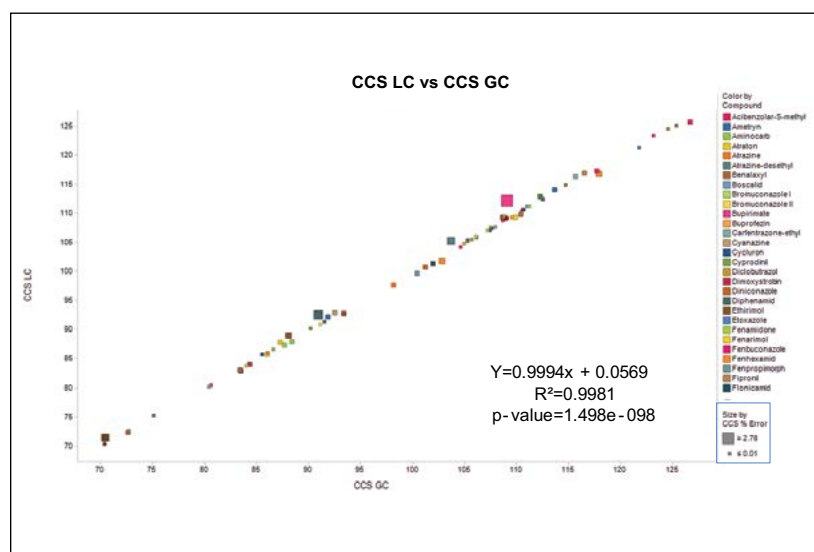


Figure 1. CCS value regression analysis of GC and LC analyses, indicating conversely to the RT comparisons, a strong correlation between CCS measurements obtained under GC and LC analyses for the 73 pesticides.

A regression analysis of the LC and GC results for CCS produced an  $R^2$  value of 0.998, indicating a very high degree of correlation. Moreover, the CCS values across the five injections in each technique showed minimal deviation.

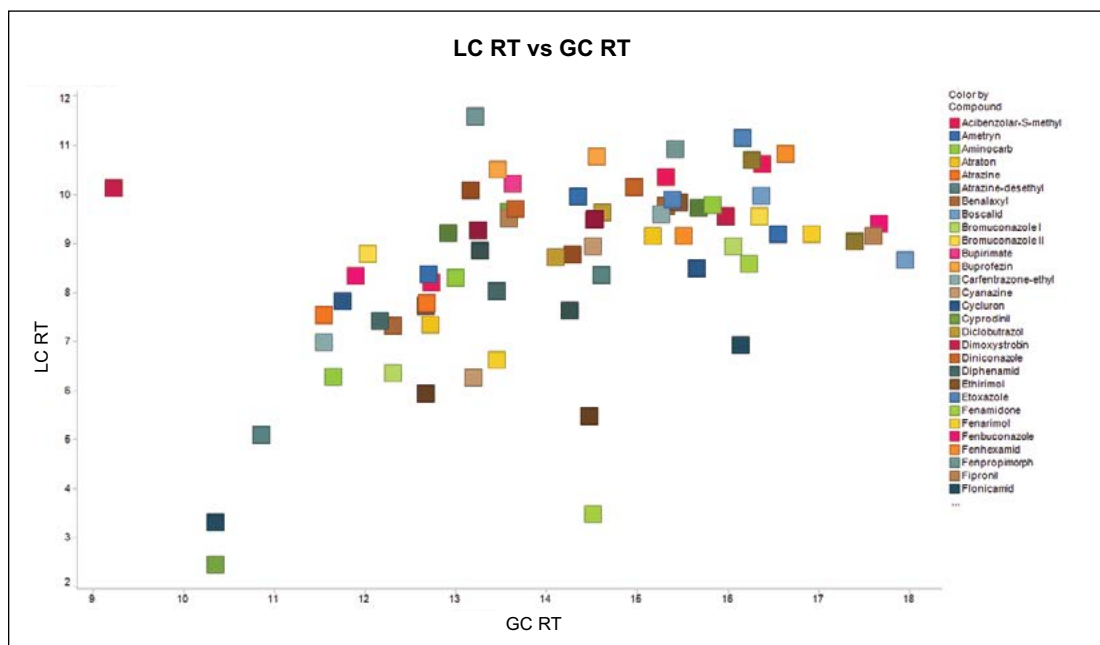


Figure 2. Retention time regression analysis of GC and LC analyses, indicating no correlation between the two approaches for 73 pesticides analyzed.

When retention times under the two techniques were compared, as would be expected, no correlation was observed (Figure 2). From these results, it could be seen that CCS values represented a unique property of the ions generated that was well conserved, regardless of that analytes introduction into the travelling wave ion mobility MS system. These results support the use of CCS values, in addition to mass and characteristic product ions, for compound identification.

## SUMMARY

CCS values are unique properties of an ion in the gas phase that are retained regardless of the method used to introduce the analytes into the MS system. Using CCS values in contaminant screening offers a unique point of identification, and allows flexibility around retention time tolerances applied for identification purposes.

# Waters

THE SCIENCE OF WHAT'S POSSIBLE.®

Waters and The Science of What's Possible are registered trademarks of Waters Corporation.  
All other trademarks are the property of their respective owners.

©2016 Waters Corporation. Produced in the U.S.A. February 2016 720005592EN AW-PDF

**Waters Corporation**  
34 Maple Street  
Milford, MA 01757 U.S.A.  
T: 1 508 478 2000  
F: 1 508 872 1990  
[www.waters.com](http://www.waters.com)