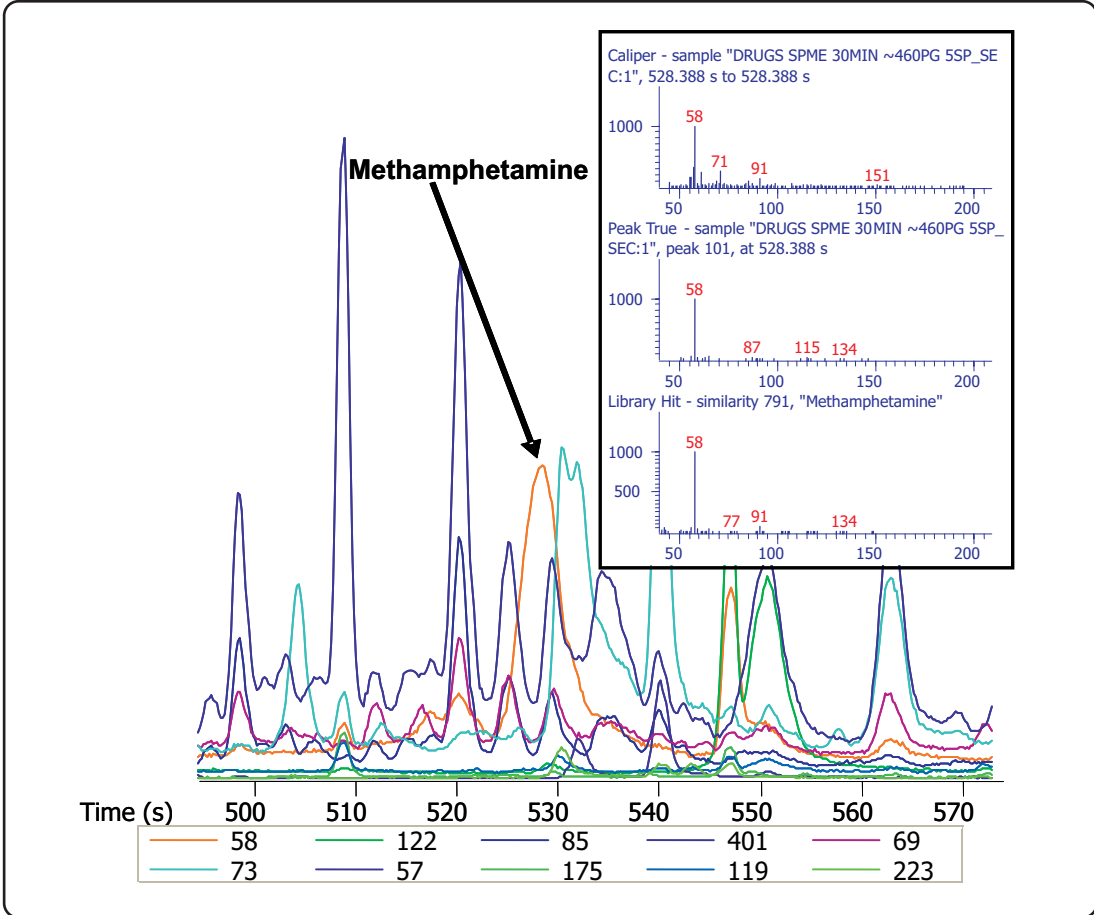


SPME-GC-TOFMS of a Nonderivatized Urine Sample Showing Deconvolution and Detection of Methamphetamine at 460 µg/uL

Life Science and Chemical Analysis Centre
LECO Corporation, Saint Joseph, Michigan USA



Extracted ion profiles for 460µg/uL methamphetamine (m/z=58) with near coelutions from a complex nonderivatized urine sample demonstrating True Signal Deconvolution.

Column:
20 m x 0.18 mm x 0.18 µm Rxi-5ms

TOFMS:
45 to 450 m/z @ 5 spectra/s

For questions on this analysis e-mail us at:
life_science@leco.com

For a complete listing of snapshots and application notes visit us on the web at www.leco.com

