

Agilent DA Express: Data Analysis for 8860 GC

For simple, routine GC applications that do not require extensive data processing or compliance support, Agilent DA Express for an Agilent 8860 GC provides simplified data analysis, and makes it easy to integrate signal data, build calibration curves, and create result reports. DA Express is built into the 8860 GC, activated by a USB license key, and is accessed through the Browser Interface.

When the DA Express USB License key is installed into an 8860 USB port, DA Express is activated for use on that 8860 GC. Menus on the Browser Interface can be used to create and store GC methods and sequences as well as access DA Express for data analysis. The Browser Interface for the 8860 provides the ability to acquire data from up to three GC detectors. Methods and data can be saved on the 8860 GC and later copied to a computer.

Five screens simplify data analysis

When you use the GC-based Methods and Sequences, and add the DA Express option, you get a complete solution inside the 8860 GC. This solution is ideal for simplified, routine workflows. It is fully accessible through the Browser Interface using any PC, and does not require a chromatography data system or dedicated computer. If using a tablet, all that is needed to fully run and get basic reports from your sample is a browser and a connection to the instrument through your network.

The Method and Sequences tabs in the Browser Interface allow you to edit and save unlimited methods and sequences—all with full alphanumeric naming. Running your sequence from the Browser Interface allows you to store your results directly onboard the GC. With the DA Express option, you can either analyze the data after the acquisition, or list a DA Express method to be executed during the sequence. DA Express is organized into five screens.

DA Express screens

Chromatogram

Lets a user open and zoom into a data file, execute the integration, and provides some simple manual integration options.

Run info

Displays the sequence information from the data file that was entered when the sequence was acquired.

Integration settings

Provides a basic set of integration events built primarily on control of peak width and slope sensitivity along with area and height reject settings. Initial settings for tangent skim, baseline correction, and shoulders are also provided.

Calibration tables

Guides users in setting up linear calibrations with the ability to control how the origin is handled.

Report option

Allows the user to base the calibration on either area or height. Six different calculation modes are provided (percent, ESTD, ISTD, Norm%, ESTD%, and ISTD%—normalized for each channel only), along with basic settings and scaling features. Reports can include instrument information as well as integration parameters and calibration information.

System requirements

DA Express works exclusively with 8860 GC. systems. One DA Express USB license key will allow DA Express to operate on the one GC where it is installed.

www.agilent.com/chem

This information is subject to change without notice.

© Agilent Technologies, Inc. 2018
Printed in the USA, December 4, 2018
5994-0501EN

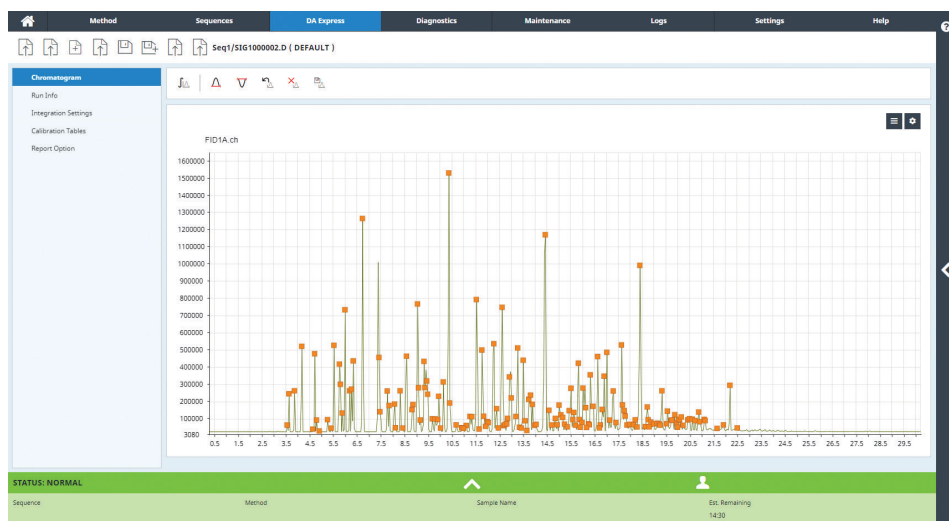


Figure 1. The DA Express chromatogram screen displays the integrated chromatogram from the browser interface.

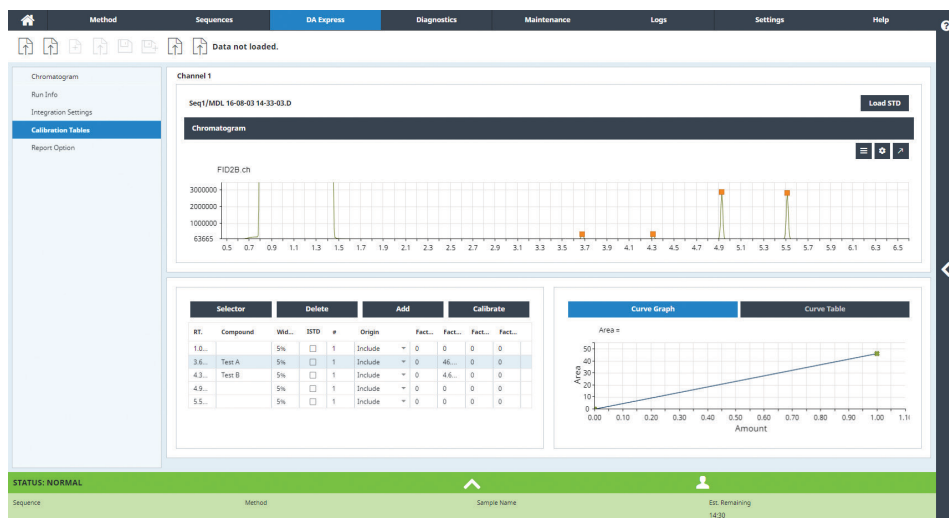


Figure 2. The DA Express data calibration screen displays the standard chromatogram and the calibration line.

Compliance

DA Express is not intended for compliant workflows. We recommend our OpenLAB CDS products in cases where compliance is necessary.

Supported languages

GC Browser Interface

Available in English, Simplified-Chinese, Japanese, Russian, or Brazilian Portuguese