

Agilent ICP-MS Journal

August 2011 – Issue 47



Inside this Issue

- 2-3 User Article: Selenium Speciation Analysis by LC-ICP-MS with Mass Balance Calculations for Se-Enriched Yeasts
- 4-5 Metal Impurities Analysis in Pharma Ingredients in Advance of New USP Methods
- 6 Monitoring ^{129}I Iodine using ICP-MS
- 7 ICP-MS Manufacturing Returns to Full Capacity Following Japanese Earthquake
- 8 Agilent Donates a 7700 to Measure Radioactive Elements; Agilent India Hosts First ICP-MS Training Event in Center of Excellence; Conferences, Meetings, Seminars; Agilent ICP-MS Publications



Selenium Speciation Analysis by LC-ICP-MS with Mass Balance Calculations for Se-Enriched Yeasts

Patrick Ward and Cathal Connolly
Alltech Biotechnology Centre, Dunboyne,
Co. Meath, Ireland. www.alltech.com

Introduction

Alltech manufactures nutritional supplements such as organic trace minerals (Bioplex) and selenium-enriched yeast (Sel-Plex) for the animal feed industry. The level of analytical detail now required by regulatory bodies in the EU and elsewhere resulted in our decision to purchase an LC-ICP-MS instrument. We had previously used single element techniques such as atomic absorption spectrometry for mineral analysis. These methods were valid and fit for purpose but in general they were time consuming and not easily automated. Sensitivity was an issue with some types of samples and additional modules, e.g. hydride generation, were required for low level selenium analysis.

Our new Agilent 7700x system was installed early in 2011 and within weeks we had transferred our methods of analysis for total mineral content over to the new instrument. The MassHunter ICP-MS software is quite different to anything that we had used before but the excellent training provided during installation meant that this was not a problem area. We are mainly interested in elements of nutritional importance although we also screen some samples for heavy metals as well. Sample preparation steps are the same as before but the simultaneous determination of several elements on the ICP-MS has greatly reduced our analysis time. In our experience so far, the additional costs associated with ICP-MS (especially liquid argon consumption) are more than offset by the improvements and savings in other areas.

Se speciation analysis, while well established in several laboratories, is a more difficult prospect than the relatively straightforward measurement of total mineral content. It was here that we relied on help from Agilent



Alltech Research Chemist Patrick Ward with Agilent 7700x ICP-MS

and colleagues from other Research groups. We received specialized training on speciation analysis from Agilent and visited a couple of laboratories where Se speciation analysis is performed routinely. These experiences significantly accelerated our progress. The remarkable sensitivity of the 7700 instrument is a welcome feature when analyzing for compounds present at very low concentrations e.g. in tissue extracts.

Application of LC-ICP-MS

Speciation analysis of nutritional supplements is a basic requirement of many regulatory authorities. It is no longer sufficient to determine only the total concentration, as it is well-known that the chemical form of a trace element determines its physiological function [1]. This applies to supplementation of animal and human diets, and the onus is on the manufacturers of such products to demonstrate product efficacy.

Selenium is an important component of several antioxidant enzymes and Se-enriched yeast is routinely added to animal feed to overcome problems associated with Se deficiency e.g. impeded development, low fertility and myopathy. As a result, the Se status of the animal is increased. This, in turn, is beneficial in the case of edible products such as meat, milk and eggs, whereby this essential element may be transferred up the food chain and contribute to improved Se status in humans. Selenomethionine (SeMet) is the main species in Se-enriched yeast; yet, several other compounds are known to be responsible for important

physiological effects such as cancer prevention [2].

Experimental

Samples of Se-enriched yeast (0.2 g) were extracted three times (18 hours @ 37 °C) with 5 mL volumes of 30 mM, pH 7.5 Tris buffer containing protease (20 mg) and lipase (10 mg). Extracts were centrifuged at 6,000 rpm for 30 minutes to yield soluble and insoluble fractions. The soluble fractions were pooled. All samples for total Se analysis were microwave digested in nitric acid (6 mL) and hydrogen peroxide (0.5 mL) using an Anton Paar Multiwave 3000.

Analysis for total selenium was performed by ICP-MS in helium mode (5 mL/min). Speciation analysis was performed using an LC coupled to an ICP-MS operating in hydrogen mode on the soluble fraction only using the conditions in Table 1.

LC system	Agilent 1260
Column	Zorbax C8, 4.6 x 250 mm (5µm)
Mobile phase	0.1% TFA/2% MeOH @ 1 mL/min
Inj. volume	50 µL
ICP-MS	Agilent 7700x
Forward RF power (W)	1550
Nebulizer	Glass Concentric
Carrier gas	1.05 L/min
KED (V)	3
Cell gas	H ₂ @ 6.5 mL/min
Isotopes monitored	77, 78, 82
Integration time	0.1 s

Table 1. LC-ICP-MS operating parameters for selenium speciation analysis

A sample of certified reference material (SELM-1, Total Se: 2,059 mg/kg, SeMet Se: 1,389 mg/kg) was included to check method accuracy.

Results and Discussion

Total selenium concentrations were determined in the soluble and insoluble fractions after microwave digestion (Table 2). In all cases, the bulk of the selenium (70-90%) was extracted into the soluble fraction following enzymatic treatment. This is important because it means that the subsequent speciation analysis, which is performed on the soluble fraction only, concerns most of the selenium in the sample.

The chromatogram in Figure 1 and the data in Table 3 indicate that SeMet is the main selenium containing compound in the soluble fraction. This concurs with earlier work published by many different research groups. In the case of SELM-1, we found that SeMet accounted for 66.9% of the total selenium. This agrees well with the NRC-certified value of 67.5%.

To perform mass balance calculations on the speciation data, we used “compound independent calibration” (CIC) to quantify the total selenium recovery from each chromatogram. This feature of the MassHunter software permits the use of a “known” calibrant, in our case selenomethionine, to estimate the Se content of other “unknown” peaks in the chromatogram. The last column in Table 3 demonstrates the usefulness of this approach, especially when working with samples that contain compounds not yet identified or characterized.

Conclusions

We found LC-ICP-MS well suited for speciation analysis of Se compounds extracted from selenium-enriched yeast. The CIC function within the MassHunter software allowed us to obtain useful information relating to the selenium content of unknown peaks. This enabled us to perform more detailed analysis of the results, including a full mass balance calculation. We plan to use LC-ICP-MS for the continuing work on characterization of nutritional supplements as well as for routine analytical work.

Sample	Se (µg)	Soluble Se (µg)	Insoluble Se (µg)	Se recovery (%)
Se Yeast 1	424.4	387.0	25.6	97.2
Se Yeast 2	205.0	176.0	13.8	92.6
Se Yeast 3	236.3	178.6	32.2	89.2
Se Yeast 4	395.9	301.8	67.4	93.2
SELM-1	374.3	341.6	22.6	97.3

Table 2. Recovery of selenium from soluble and insoluble fractions

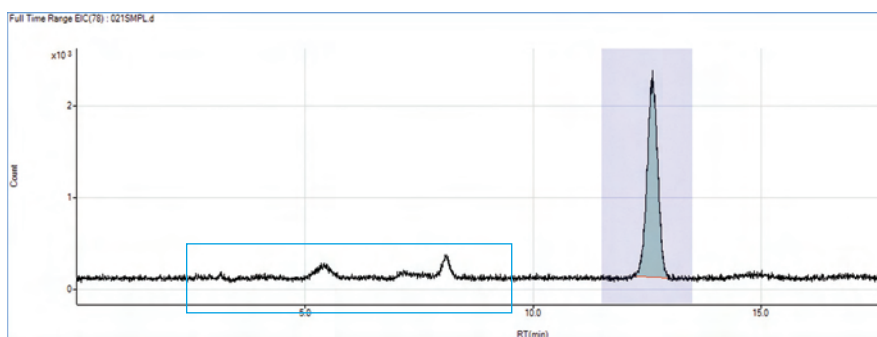


Figure 1. Full LC chromatogram for SELM-1 showing SeMet as the main peak and early portion of chromatogram showing several smaller peaks corresponding to “unknown” Se-compounds

Sample	Se (µg)	*SeMet Se (µg)	CIC, Se recovery from LC (µg)	Mass balance Se recovery (%)
Se Yeast 1	387.0	256.2 (66.2)	392.4	101.4
Se Yeast 2	176.0	115.8 (65.8)	169.5	96.3
Se Yeast 3	178.6	120.0 (67.2)	172.7	96.7
Se Yeast 4	301.8	194.2 (64.3)	311.2	103.1
SELM-1	341.6	225.8 (66.9)	354.9	103.9

Table 3. Recovery of selenium following speciation analysis of the soluble fraction

*Numbers in brackets represent the % of total Se recovered as SeMet

References

1. K. A. Jacques, Feed Compounder 2002, 14-21.
2. H. Goenaga-Infante, et al., Journal of Analytical Atomic Spectrometry 2005, 20, 864-870.

Acknowledgements

The authors are grateful for the assistance of Heidi Goenaga-Infante and Christian Deitrich at LGC, Teddington, UK, Katarzyna Bierla at LCABIE-IPREM, Pau, France and Richard Rigg and Raimund Wahlen of Agilent Technologies.

ICP-MS Analysis of Metal Impurities in Pharma Ingredients in Advance of New USP Methods

Amir Liba, ¹Samina Hussain and Ed McCurdy

Agilent Technologies Inc., ¹Exova, CA, USA

Introduction

The pharmaceutical industry is currently using a 100 year old “heavy metals limit test” (USP<231>) to determine metal impurities in pharmaceutical products, such as active pharmaceutical ingredients (API) and excipients.

USP<231> measures the sum of 10 sulfide-forming elements (Ag, As, Bi, Cd, Cu, Hg, Mo, Pb, Sb and Sn), using a precipitation reaction with a reagent such as thioacetamide. The colored precipitate is compared to a 10 ppm Pb standard to determine compliance with the heavy metals limit. Besides the obvious potential bias associated with a subjective visual comparison, the use of thioacetamide and H₂S is not allowed in many parts of the world due to safety and environmental concerns.

Moreover, USP<231> does not give individual concentrations for each element and, as the method may require ignition of the sample in a furnace at up to 600°C, loss of volatile analytes during sample preparation is inevitable. These issues have led to a program to replace USP<231> with a new method that is more reliable, specific, performance-based, and uses modern instrumental analysis.

Three proposed new USP General Chapters for elemental impurities are being developed, USP <232>/<233> and <2232>. USP <2232> is limited to dietary supplements, while USP <232> and <233> deal with drug products and drug substances. USP<232> defines Permitted Daily Exposure (PDE) limits for a new list of analytes, based on potential toxicity, rather than method capability, and for the first time metal catalysts are included. USP<233> defines the analytical and validation procedures that labs must use to ensure that the analysis is

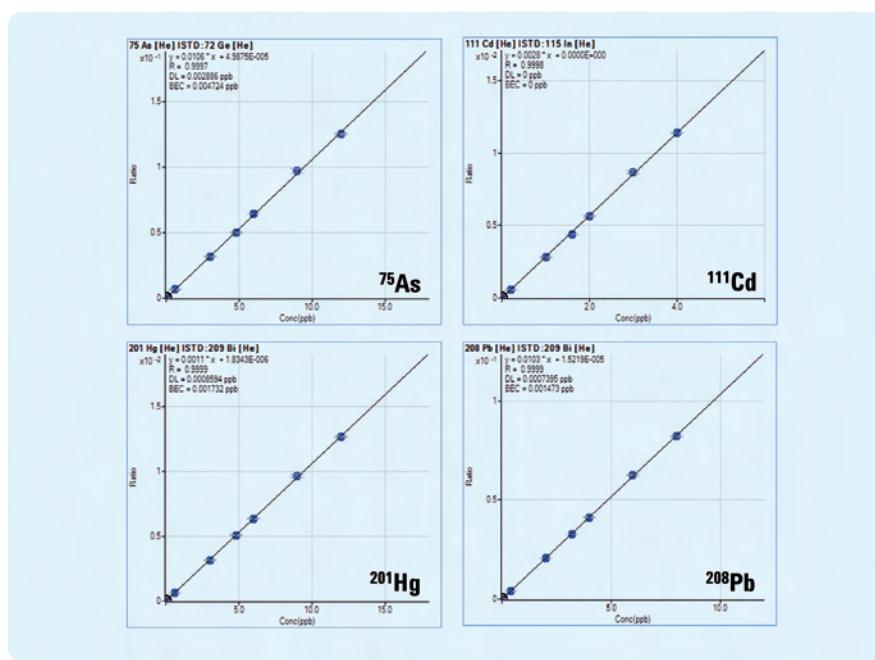


Figure 1. Calibration curves for ⁷⁵As, ¹¹¹Cd, ²⁰¹Hg, ²⁰⁸Pb

“specific, accurate, and precise.”

USP<232>/<233> permits the use of any “suitable” analytical technique, as long as it can be shown to give equivalent data to the reference ICP-OES and ICP-MS methods. In practice, most labs are likely to opt for one of the ICP techniques, due to their ability to measure all required elements in a single rapid analysis.

While the required PDE limits can be measured easily with either ICP-OES or ICP-MS, the limits must be corrected for any dilution factor during sample preparation, and are also adjusted depending on the type of pharmaceutical product and the route of administration. For example drug products administered by a parenteral or inhalational route must meet a modified PDE that is 10x lower than the limit for oral administration. In a digest of a solid sample material, a dilution factor of 250x would give a measurement limit (the “J” value) of 2 ppb for Cd. Accurate recovery must be demonstrated at 0.5J, suggesting a required detection limit at least 10x lower than this – 0.1 ppb – a limit easily achieved using ICP-MS.

In the most recent revision of USP<232>, the previous Group I and Group II analytes have been combined into a single table, but the more toxic elements (As, Cd, Hg and Pb, sometimes referred to as the “Big Four”) are controlled at much lower

levels than the other analytes, and must be measured in all samples. In this study, we performed method validation for several pharmaceutical products and ingredients, according to the May 2011 revision of USP <232>/<233>, using an Agilent 7700 Series ICP-MS.

Experimental

An Agilent 7700x ICP-MS was used to measure the 16 regulated elements in calibration standards, digested samples, and samples spiked at the levels specified in USP<233>.

The 7700 Series ICP-MS utilizes a 3rd generation Octopole Reaction System (ORS³) for removal of polyatomic interferences using helium (He) mode with kinetic energy discrimination (KED). He mode has the major benefit that it can deliver reliable results for all analytes regardless of the sample matrix, which simplifies method development and routine analysis.

The 7700x ICP-MS also benefits from very robust plasma (indicated by the CeO/Ce ratio of around 1%), which ensures that good sensitivity is obtained for the poorly ionized elements As, Cd, Hg and the PGEs Os, Ir, Pt and Au. The 7700x is also equipped with High Matrix Introduction (HMI) capability which further improves plasma robustness and enables analysis of samples with very high (% level) total dissolved solids (TDS), as may be the case in pharmaceutical samples.

Results and Discussion

Calibration standards were prepared in 1% HNO₃ and 0.5% HCl, while the samples were prepared in 2% HNO₃ and 0.5% HCl. HCl is not specifically required in USP<233>, which refers to the use of “strong acids” for sample preparation, but a complexing agent such as Cl⁻ (HCl) is in fact essential to ensure chemical stability of several of the elements specified in the method. It is widely known that a complexing agent is required to ensure the stability of Hg, and the platinum group elements (PGEs) also require complexation with HCl to ensure they remain stable in an acidic solution. HCl has previously been avoided in ICP-MS analysis, due to the formation of Cl-based polyatomic interferences on V, Cr (ClO/ClOH) and As (ArCl). However, He mode on the 7700 effectively reduces all these Cl-based interferences, so HCl can now be added routinely to stabilize samples for analysis by ICP-MS.

The analysis used He mode for all analytes, and example calibration curves for the “Big 4” analytes ⁷⁵As, ¹¹¹Cd, ²⁰¹Hg and ²⁰⁸Pb are shown in Figure 1. Method validation for quantitative (as opposed to limit) methods under USP<233> requires assessment of spike recovery (between 70% and 150%) and precision

(< 20% RSD) at concentrations between 0.5J and 1.5J. Table 1 shows the mean recoveries and external repeatability for spikes at 0.5J, 1.0J and 1.5J into Gelatin Capsule samples (10 separate samples for each spike level – USP<233> requires 6 replicates). The recovery and %RSD data in Table 1 demonstrate accurate and precise determination of all required analytes. While the results were well within the 70% to 130% recovery limits, it is noticeable that the recovery of Os was consistently slightly low, probably because of the relatively low concentration of HCl used for these samples (up to 5% HCl may be needed to ensure long-term stability of the PGEs in some sample types).

USP<233> also requires that the analysis provides the ability to “unequivocally” assess each analyte in the presence of other analytes and matrix elements. A further benefit of He mode is that it reduces the polyatomic interferences on all isotopes under a single set of cell conditions, which allows secondary isotopes to be measured for many analytes. The data shown in Table 1 also demonstrate this secondary isotope capability, as consistent results were obtained for the confirmatory isotopes of Cr, Ni, Cu, Mo, Cd, Os, Ir, Pt, Hg and Pb.

Conclusions

The proposed revision to the methods for analysis of elemental impurities in pharmaceutical samples (USP<232>/<233>) and dietary supplements (USP<2232>) introduces much more strict analytical and method validation requirements than those defined in the current method USP<231>. All of the proposed new analytes can easily be determined within the method requirements using the Agilent 7700x ICP-MS, including those that require HCl to ensure chemical stability. He mode ensures accurate and repeatable analysis and makes secondary isotopes available for confirmation of the measured result. The data obtained demonstrates the suitability of the 7700x to provide specific, unequivocal, accurate and precise analysis of pharmaceutical samples.

Furthermore, As or Hg must be determined as the inorganic forms, so if the measured level of these analytes exceeds the permissible daily exposure (PDE), the chemical form of the element must be identified. This is easily achieved using the 7700, which provides simple connection to HPLC for speciation analysis.

Mass / Element	0.5J Spikes				1.0J Spikes				1.5J Spikes			
	Actual	Measured Mean (n = 10)	% Recovery	%RSD	Actual	Measured Mean (n = 10)	% Recovery	%RSD	Actual	Measured Mean (n = 10)	% Recovery	%RSD
51 V	50	53.09	106	2.0	100	105.6	106	2.1	150	157.9	105	1.6
52 Cr	50	52.76	106	2.3	100	104.7	105	2.2	150	156.3	104	1.7
53 Cr	50	52.92	106	2.6	100	105.1	105	2.5	150	157.4	105	1.7
55 Mn	500	525.7	105	1.9	1000	982.7	98	1.9	1500	1702	113	1.4
60 Ni	50	53.23	106	2.1	100	105.7	106	2.2	150	156.4	104	1.7
62 Ni	50	52.94	106	2.2	100	105.3	105	2.1	150	156.7	104	1.7
63 Cu	500	535.4	107	2.1	1000	1134	113	2.3	1500	1767	118	1.7
65 Cu	500	462.4	92	2.0	1000	1167	117	2.3	1500	1790	119	1.5
75 As	3	3.43	114	3.8	6	6.43	107	2.4	9	9.72	108	4.2
95 Mo	50	52.87	106	2.2	100	105.9	106	2.2	150	158.0	105	1.8
97 Mo	50	52.86	106	2.0	100	106.0	106	2.1	150	157.8	105	1.8
101 Ru	20	20.93	105	2.2	40	42.71	107	2.1	60	64.43	107	1.3
103 Rh	20	21.09	105	2.1	40	42.85	107	2.4	60	64.30	107	1.3
105 Pd	20	20.96	105	2.3	40	42.52	106	2.3	60	63.88	106	1.3
111 Cd	1	1.04	104	2.9	2	2.09	104	2.1	3	3.12	104	2.0
114 Cd	1	1.04	104	2.5	2	2.10	105	2.4	3	3.16	105	1.6
188 Os	20	17.30	86	2.2	40	35.27	88	1.8	60	52.42	87	1.4
189 Os	20	17.34	87	2.3	40	35.28	88	1.7	60	52.52	88	1.4
191 Ir	20	20.69	103	2.0	40	42.03	105	1.9	60	63.39	106	1.2
193 Ir	20	20.75	104	2.2	40	42.12	105	2.0	60	63.44	106	1.1
194 Pt	20	20.75	104	2.1	40	42.54	106	2.2	60	63.82	106	1.2
195 Pt	20	20.74	104	2.0	40	42.54	106	2.2	60	63.88	106	1.2
200 Hg	3	3.10	103	2.3	6	6.31	105	2.0	9	9.50	106	1.2
201 Hg	3	3.09	103	2.5	6	6.31	105	2.0	9	9.46	105	1.1
202 Hg	3	3.09	103	2.2	6	6.30	105	2.0	9	9.46	105	1.2
206 Pb	2	2.09	104	1.9	4	4.14	103	1.9	6	6.20	103	1.5
207 Pb	2	2.08	104	2.1	4	4.13	103	2.0	6	6.20	103	1.5
208 Pb	2	2.08	104	2.2	4	4.15	104	1.7	6	6.19	103	1.3

Table 1. Recovery and repeatability at 0.5J, 1.0J and 1.5J for Gelatin Capsules. All concentration values in ng/mL, ppb

Monitoring Radioactive ^{129}I using ICP-MS

Kazumi Nakano, Yasuyuki Shikamori,
Naoki Sugiyama and Shinichiro
Kakuta Agilent Technologies, Japan

Introduction

Iodine ^{129}I (^{129}I) is a long-lived radionuclide (half-life of 15.7 million years), which is present in the environment as a result of nuclear weapons testing and accidental release from nuclear power stations and nuclear fuel reprocessing plants. The commonly-used techniques for the measurement of ^{129}I , neutron activation analysis (NAA) and accelerator mass spectrometry, or liquid scintillation counting and gamma spectrometry, are all slow (from several hours to several weeks) and may require radiochemical separation prior to analysis.

Inductively coupled plasma mass spectrometry (ICP-MS) can quickly screen for I at low levels in food and environmental samples, and requires minimal sample preparation. But ^{129}I is affected by a spectral overlap from the 129 isotope of Xe, which is present as an impurity in the argon plasma gas. The Agilent 7700 Series ICP-MS can resolve this interference using oxygen reaction mode with the optional reaction gas line of the Octopole Reaction System (ORS³). O_2 cell gas removes the Xe^+ ion by the reaction $\text{Xe}^+ + \text{O}_2 \rightarrow \text{Xe} + \text{O}_2^+$. O_2 reaction gas also removes the $^{127}\text{IH}_2^+$ interference from high levels of natural I in samples. The effectiveness of O_2 reaction mode on the 7700 ICP-MS is illustrated in Figure 1.

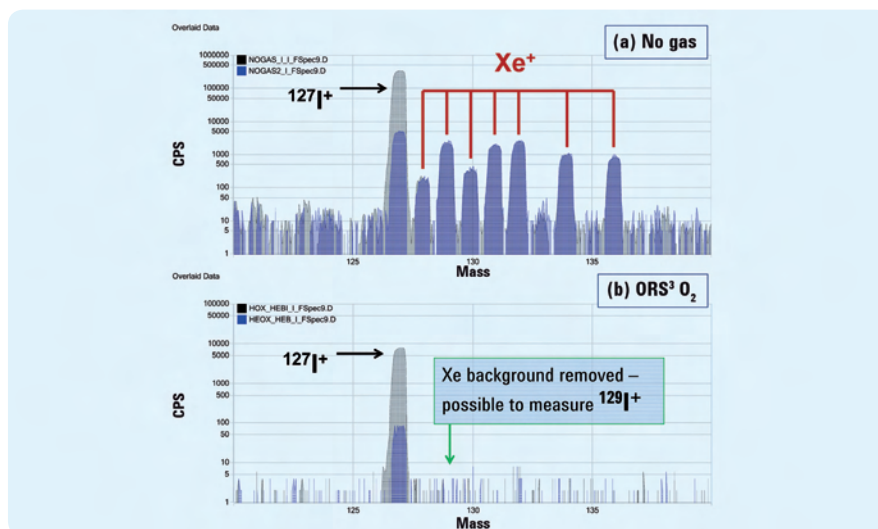


Figure 1. Overlaid ^{127}I standard (grey) and blank (blue). Top – Interference on ^{129}I from ^{129}Xe in no gas mode; bottom – Xe overlap removed in O_2 reaction mode

Measurement of trace level ^{129}I and $^{129}\text{I}/^{127}\text{I}$ isotope ratios

The removal of the spectral overlaps at mass 129 allows the determination of ^{129}I at low levels in natural samples. The detection of ^{129}I using O_2 reaction mode on the Agilent 7700x ICP-MS was evaluated using the reference materials NIST 3231 Level I and Level II. These isotope ratio standards have certified values for the $^{129}\text{I}/^{127}\text{I}$ ratio of $0.981 \times 10^{-6} \pm 0.012 \times 10^{-6}$ in Level I, and $0.982 \times 10^{-8} \pm 0.012 \times 10^{-8}$ in Level II. The $^{129}\text{I}/^{127}\text{I}$ isotope ratio was measured with a precision of less than 2% RSD in a 10x dilution of the Level I standard (total I concentration 88.9 mg/L (ppm)), and less than 10% RSD in a 100x dilution (^{129}I present at single ppt). This is remarkable performance for an isotope ratio with such a large difference in isotopic abundance.

Three standards, a ^{129}I blank (containing natural ^{127}I from a KI solution), NIST 3231 Level I standard diluted 1:10, and an intermediate standard (prepared by diluting NIST 3231 100x in the KI blank) were screened using the 7700 ICP-MS, to confirm that the ^{129}I peak was free from any spectral overlap, as illustrated in Figure 2.

A quantitative calibration was then prepared for ^{129}I , giving the plot shown in Figure 3. The linearity was excellent at low ppt levels, and the BEC and DL were both less than 2 ng/L (ppt).

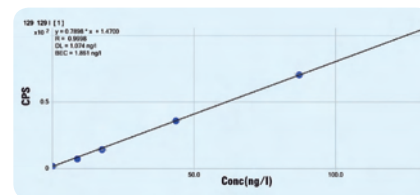


Figure 3. Calibration for iodine 129 using O_2 reaction mode on the 7700x ICP-MS (BEC 1.9 ppt; DL 1.1 ppt)

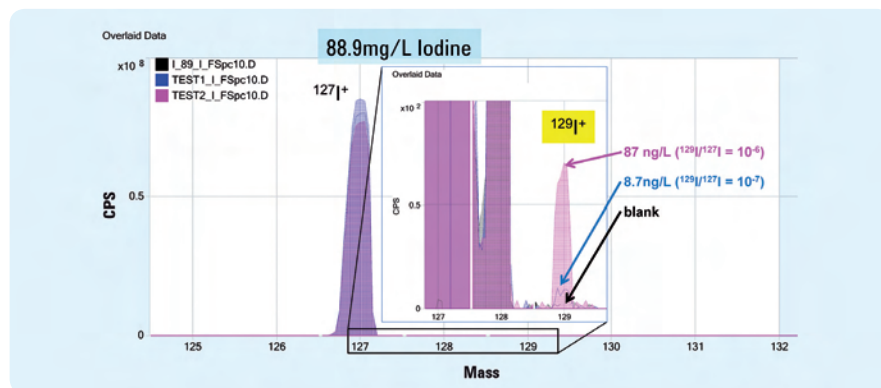


Figure 2. Scan over the mass range of iodine, showing overlaid spectra for the KI blank, the NIST 3231 Level I at 10x dilution (^{129}I measured at 87 ppt), and an intermediate standard mix (^{129}I measured at 8.7 ppt)

Conclusions

The measurement of low-level radioactive iodine (^{129}I) is now possible using O_2 reaction mode on the Agilent 7700x ICP-MS. The new method:

- Provides a detection limit of 1 ng/L (ppt) for ^{129}I
- Is fast (a few minutes per sample)
- Requires minimal sample preparation (simple dilution or digestion).

The method can therefore be used for fast routine screening or monitoring of ^{129}I in food and environmental samples.

ICP-MS Manufacturing Returns to Full Capacity Following Japanese Earthquake

Ken Suzuki

ICP-MS Marketing Manager,
Agilent Technologies

On 11 March 2011, Japan's eastern coast was devastated when a massive tsunami triggered by the most powerful earthquake in the country's recorded history smashed ashore.

Direct impact to Agilent's ICP-MS manufacturing facility, Tokyo Analytical Division (TAD), based in Hachioji, Tokyo was minor and the site remained operational. However, a few of our suppliers' sites were seriously damaged in the disaster. Furthermore, the rolling power outages by Tokyo Electric Power Company throughout March occurred almost daily for 3-4 hours at a time, seriously impacting on manufacturing and product development. With every blackout, it took 1.5 hours to shut down and reboot the R&D computer servers, leaving R&D engineers without access to their server for 6-7 hours.

Manufacturing Challenges

Despite the adversity, all staff at TAD worked hard to minimize the impact to customers by continuing production. Some started work earlier in the mornings and others stayed on later in the evenings. In parallel with our improvised manufacturing operation we had daily updates from all direct suppliers on their recovery status. While some suppliers' operations were severely interrupted, most of our key suppliers were either unaffected or had suffered only limited damage and were quick to recover. Where there were problems with supply, we selected and evaluated alternative parts with R&D engineering team or selected alternative vendors with our partner and direct suppliers. We were also fortunate that none of our suppliers was located within the restricted area around the damaged Fukushima nuclear power plant.



Figure 1. Agilent 7700 Series ICP-MS final test facility in Tokyo

According to Mitsuki Goto, ICP-MS Manufacturing Manager, "Teamwork of our suppliers, manufacturing partners and all functions within TAD helped ICP-MS manufacturing to recover quickly."

The fact that there were no delays to customer shipments is a testament to TAD manufacturing personnel and the Agilent supply chain management. Toshifumi Matsuzaki, General Manager for ICP-MS commented: "I'm very proud of my team in Hachioji for their dedication, commitment, flexibility and hard work. I was also impressed by our suppliers' recovery speed." This resilience and speed to recovery is commendable and is a clear example of why manufacturing is a key factor to Agilent's ICP-MS success.

In relation to R&D Matsuzaki-san added: "There has been almost no schedule impact to new product development projects. According to my software and solution project manager, one key project has been delayed by three days because of the power outage – that's it!"

Return to Full Production

In just two months following the natural disaster, ICP-MS production had fully recovered and was back to pre-earthquake production capacity

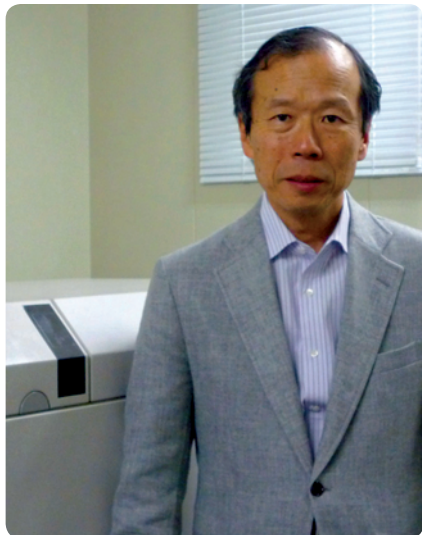
(Figure 1). We also took the opportunity to address any potential risk areas in our supply chain and are confident that we can continue to fulfil forward-looking ICP-MS demand.

Help for the Devastated Areas

Since the earthquake on March 11, Agilent and the Agilent Technologies Foundation have contributed over \$850,000 in donations and equipment to help with the disaster response.

Agilent Donates a 7700 to Measure Radioactive Elements

Together with the methodology summarized on page 6, Agilent has donated a 7700 ICP-MS to Gakushuin University in Japan so that they can identify radioactive iodine quickly and accurately.



Testing will be performed in the lab of Prof. Yasuyuki Muramatsu (pictured), a renowned expert on radiation in the environment. Prof. Muramatsu, who works in the university's chemistry department, was recently appointed by the Fukushima Prefecture to assess the effect of radiation on local farms after the area's nuclear power plant was damaged by the recent earthquake and tsunami.

Prof. Muramatsu's lab measures ultra-trace levels of radioactive elements, including iodine isotopes 129, 131 and 127, as well as trace elements such as Cs and Sr, which are relevant to radioisotopes released from the reactor into the environment.

"Radioactive iodine-129 is of particular interest because of its long half-life," said Prof. Muramatsu. "Monitoring its levels will be important for the safety assessment of radioiodine deposited in the environment."

This information is subject to change without notice.

© Agilent Technologies, Inc. 2011
Printed in the U.S.A. August 16, 2011
5990-8738EN

Agilent India Hosts First ICP-MS Training Event in Center of Excellence



Attendees and Agilent staff participating in the Agilent Academy ICP-MS training event in India

The first Agilent Academy ICP-MS customer education event to be held at the recently extended Bangalore Center of Excellence took place over 2 days beginning on July 14, 2011.

Response to the "ICP-MS: Fundamentals and Applications" training course was overwhelming, with all 10 places being snapped up quickly. Two additional places were created to ease demand and another training course is planned for September 20-21, 2011.

Participant feedback was positive with praise being given to the knowledge base of the Agilent trainers, Arun Kumar Raju & Dharmendra Vummiti. Attendees especially appreciated the practical format of the training that included live demonstrations, discussions and hands-on operation of the 7700 Series ICP-MS for Method setup, Data Analysis, Reporting etc.

Conferences. Meetings. Seminars.

JAIMA, September 7-9, 2011, Makuhari Messe, Japan.
www.jaimasis.jp/2011/english/index.html

Agilent ICP-MS Publications

To view and download the latest ICP-MS literature, go to www.agilent.com/chem/icpms and look under "Literature Library" and search using the title or publication number.

- **Application Note:** EPA approved standard operating procedure for the analysis of flue gas desulfurization wastewater, 5990-8114EN
- **Application Note:** Trace elemental analysis of trichlorosilane by Agilent 7700s ICP-MS, 5990-8175EN
- **Application Note:** The ultratrace determination of iodine 129 in aqueous samples by ORS-ICP-MS using oxygen reaction mode, 5990-8171EN
- **Advertorial:** Plasma Robustness in ICP-MS: Benefits of a Low CeO/Ce Ratio, 5990-8060EN

Agilent ICP-MS Journal Editor

Karen Morton for Agilent Technologies
e-mail: icpms@agilent.com



Agilent Technologies