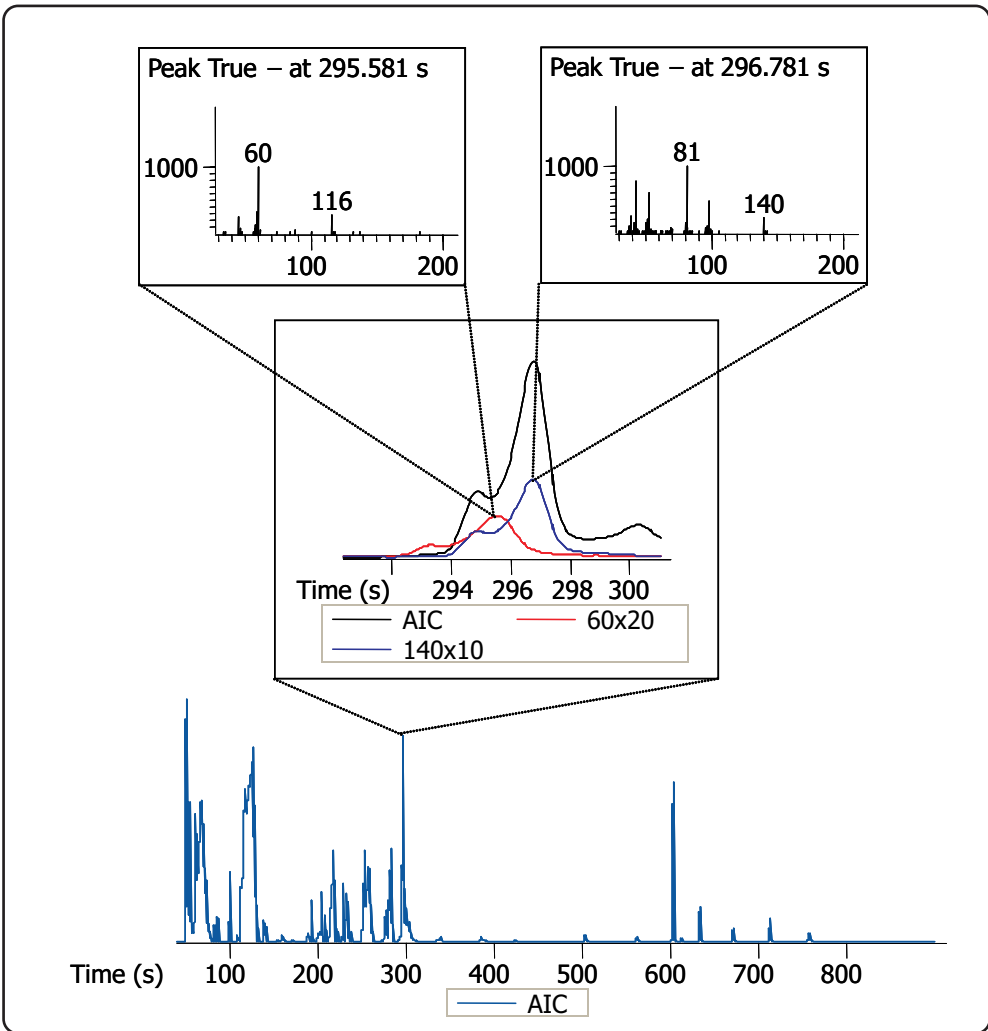


Coffee Analysis by GC-TOFMS

Life Science and Chemical Analysis Centre
 LECO Corporation, Saint Joseph, Michigan USA



This caption shows the capability of ChromaTOF's deconvolution algorithm to separate two coeluting peaks and give two distinct non-skewed mass spectra for each peak.

Column:
 10 m x 0.18 mm x 0.2 μ m Rtx-5

TOFMS:
 29 to 300 m/z @ 20 spectra/s

For questions on this analysis e-mail us at:
life_science@leco.com

For a complete listing of snapshots and application notes visit us on the web at www.leco.com

