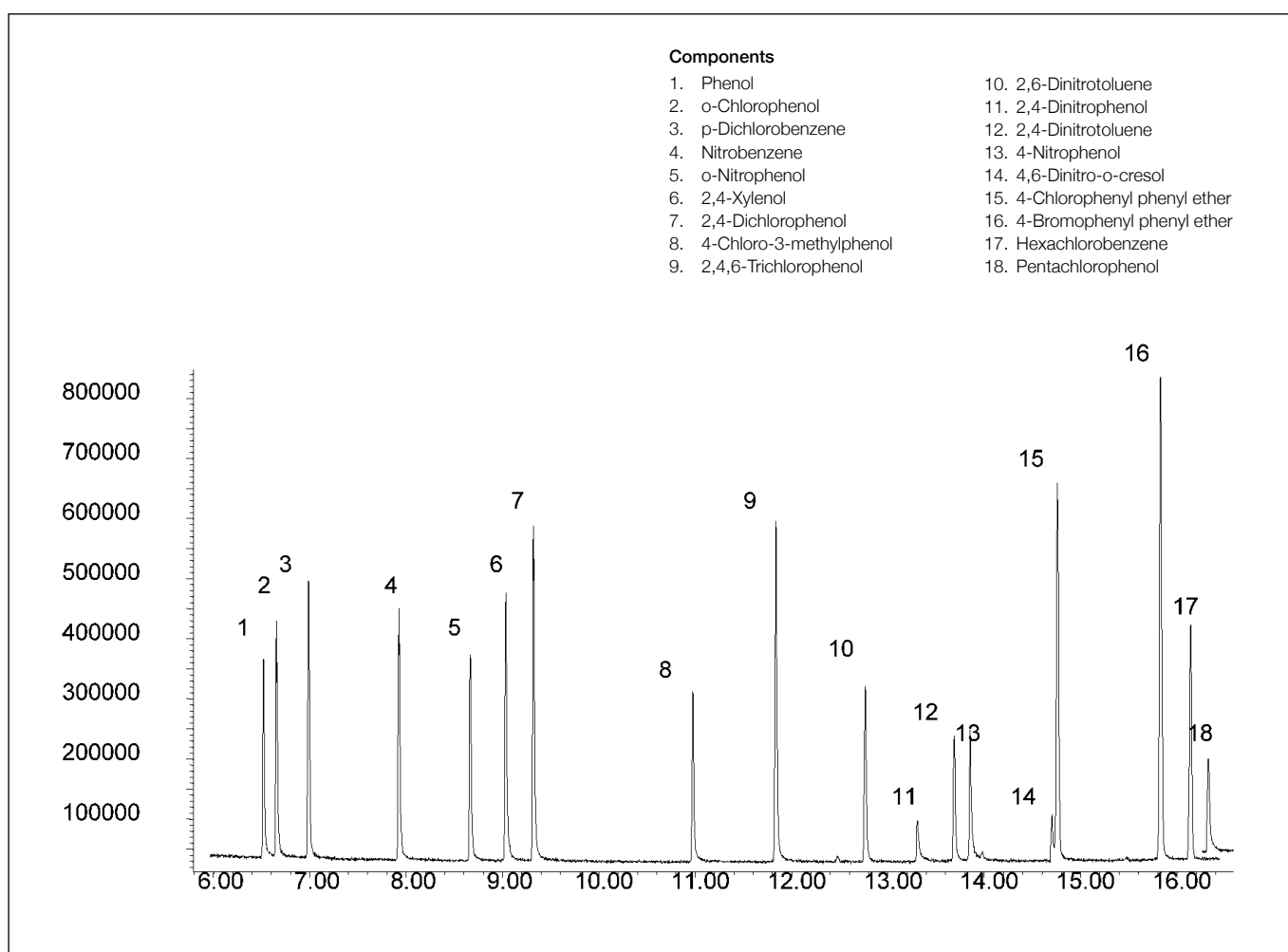


## Analysis of chlorinated and nitroaromatic compounds

SolGel-1ms™

Column part number	054795		
Phase	SolGel-1ms™	Carrier gas flow	1.8 mL/min
Column	30 m x 0.25 mm x 0.25 µm	Constant flow	On
Sample	200 ppm in dichloromethane	Average linear velocity	35 cm/sec, 40°C
Initial temperature	40°C, 1 min	Injection mode	Split (100:1)
Rate	10°C/min	Injection volume	0.5 µL
Final temperature	300°C, 2 min	Injection temperature	250°C
Detector	MS	Liner type	4 mm ID Single Taper
Carrier gas	He, 25.7 psi	Full scan / SIM	Full scan 45-450


 For more information visit [www.trajanscimed.com](http://www.trajanscimed.com) or contact [techsupport@trajanscimed.com](mailto:techsupport@trajanscimed.com)