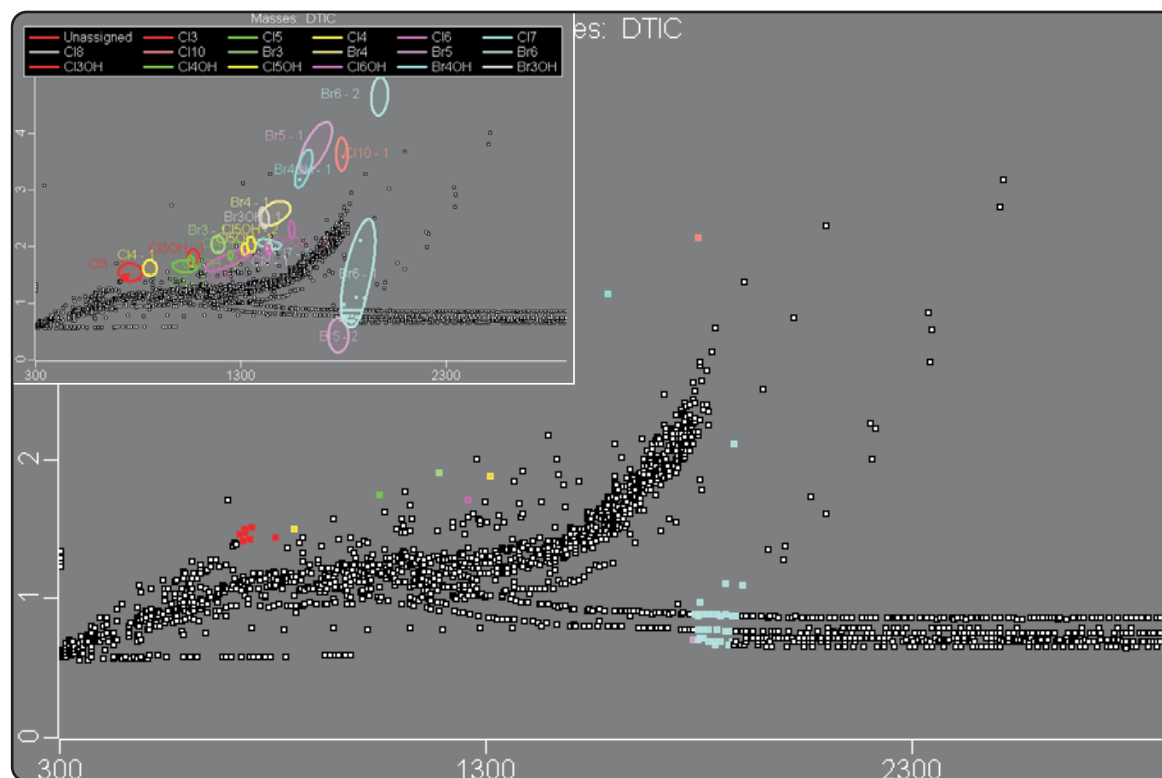


# "Peak Marker Only" Plots for GCxGC-TOFMS

Life Science and Chemical Analysis Centre  
LECO Corporation, Saint Joseph, Michigan USA



**A plot showing only peak markers for an analysis of fish plasma by GCxGC-TOFMS. White Peak Markers are for unclassified peaks and colored Peak Markers correspond to peaks that have been classified. The inset shows the corresponding Legend and Classification Regions. This plot can be produced by selecting "No Contour" on the "Type" tab in "Properties".**

#### Columns:

30 m x 0.25 mm x 0.25  $\mu$ m Rtx-1ms  
1.25 m x 0.10 mm x 0.10  $\mu$ m BPX-50

#### TOFMS:

45 to 760 m/z @ 100 spectra/s

#### ChromaTOF® Software:

Version 4.0

For questions on this analysis  
e-mail us at: [life\\_science@leco.com](mailto:life_science@leco.com)

For a complete listing of snapshots  
and application notes visit us on the  
web at [www.leco.com](http://www.leco.com)

