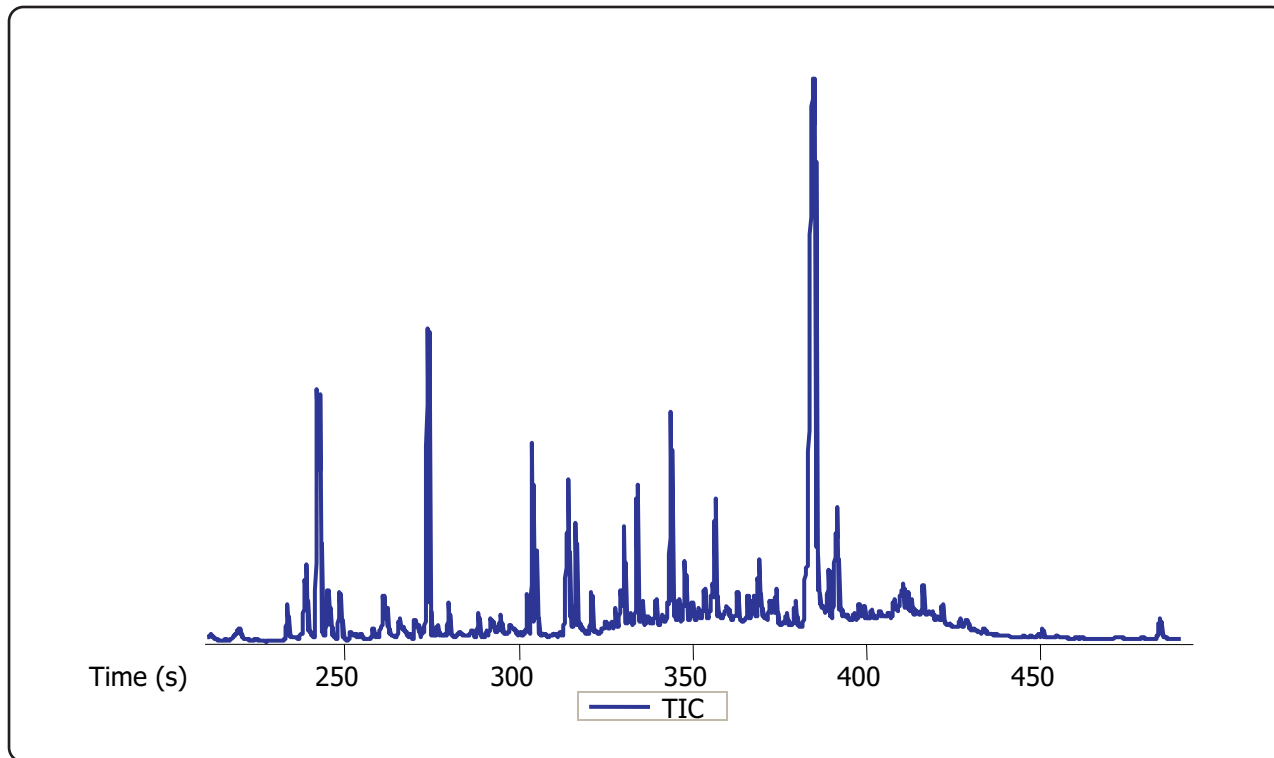


SBSE-GC-TOFMS Analysis of Green Tea for OCP/OPP Pesticides

Life Science and Chemical Analysis Centre
LECO Corporation, Saint Joseph, Michigan USA



SBSE-GC-TOFMS analysis of brewed Green Tea spiked with 22 OCP/OPP pesticides at 500 parts per trillion.

Column:

Mach/LTM 10 m x 0.10 mm x 0.20 μm RTx-5

TOFMS:

50 to 510 m/z @ 20 spectra/s

For questions on this analysis e-mail us at:
life_science@leco.com

For a complete listing of snapshots and application notes visit us on the web at www.leco.com

