

Shimadzu Super-Clean Gas Filter



Ensuring a Super-Clean Analytical Journey

Impurities in gases, such as hydrocarbons, moisture and oxygen, can contaminate the gas line and instrument, cause column degradation and affect the accuracy of your analysis results, which may lead to instrument downtime. Even though high-purity gases are used, contaminants may result from pressure regulators or other parts of the gas line. Therefore, an additional gas filter is essential.

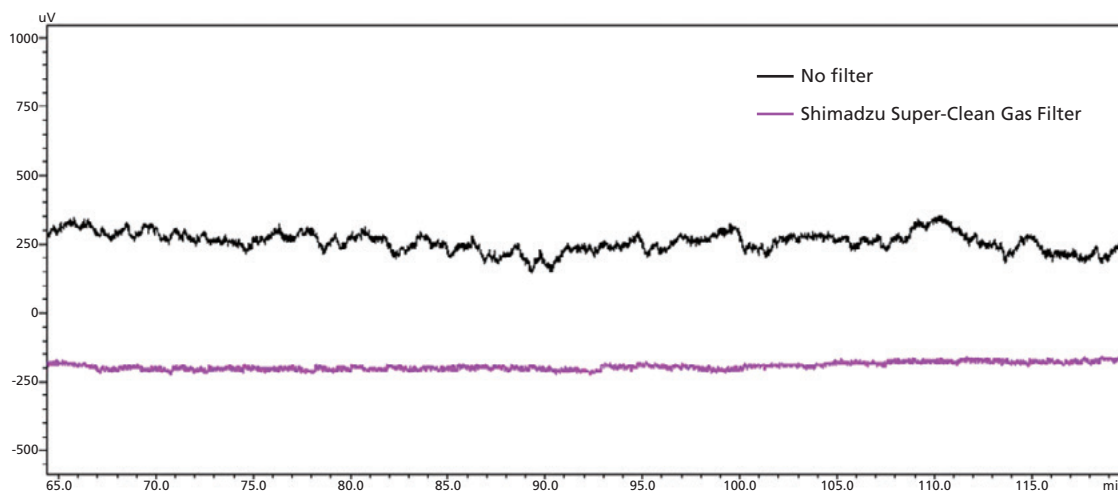
Introducing the *Shimadzu Super-Clean Gas Filter!*



Example of Shimadzu Gas Filter Kit for GC-FID

Ensure High-purity Gas

The Shimadzu Super-Clean Gas Filter can remove the impurities (hydrocarbons, moisture and oxygen) and outlet 99.9999% pure gas. The use of high-purity and contaminant-free gases reduces column degradation, prevents ghost peaks and baseline fluctuations, eliminates excessive detector noise, and keeps your instrument in good working performance.



Using the Shimadzu Super-Clean Gas Filter results in significantly lower detector noise.

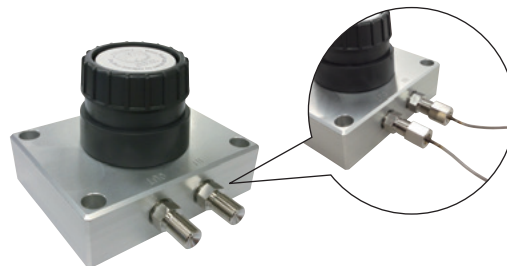
Easy and Leak-tight Replacement

The design of the Shimadzu Super-Clean Gas Filter makes it possible to replace filter cartridges quickly and easily without any tools. Spring-loaded check valves seal when a cartridge is removed and open only when a new cartridge has been locked in place, which prevents contamination of the system during the replacement process.

As long as there is no filter cartridge connected, the spring-loaded check valves block the gas stream automatically.



Installing the filter

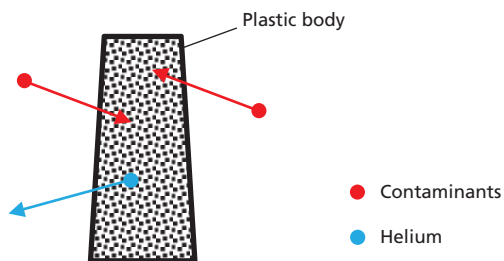


M type connector can be connected directly to the Shimadzu gas supply pipe.

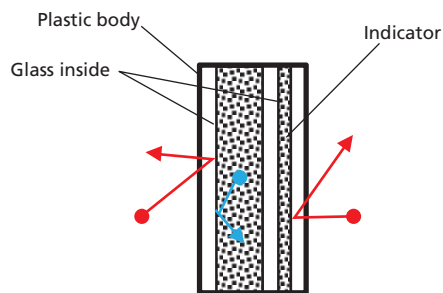
The fittings connecting the filter and gas supply pipe are Shimadzu M type. Connecting directly to Shimadzu gas supply pipes ensures a leak-free and completely clean gas line.

Unique Body Design

A plastic body helps with checking the indicators and replacing the filter cartridges. However, it also allows contaminants to diffuse into the instrument and cause helium to leak. To address this issue, the Shimadzu Super-Clean Gas Filter has been designed to pack the absorbents in glass inside the plastic body, thereby preventing diffusion.



Other filter with plastic body



Shimadzu Super-Clean Gas Filter

Easy-to-read Indicator

The Shimadzu Super-Clean Gas Filter is designed with an easy-to-read indicator. It changes color when the absorbent is saturated, indicating when filter cartridges should be replaced.



Before using



If absorbent is saturated, the indicator changes color

Product Information

Super-Clean Gas Filter Kits

P/N	Description
227-37001-02	Shimadzu Carrier Gas Filter Kit Includes one 1-position base plate with M type connectors, one Oxygen/Moisture/Hydrocarbon filter
227-37003-01	Shimadzu Gas Filter Kit for GC-FID/FPD Includes one 3-position base plate with M type connectors, one Oxygen/Moisture/Hydrocarbon filter for Carrier gas, two Hydrocarbon/Moisture filters for H ₂ and Air
227-37002-01	Shimadzu Gas Filter Kit for GC-ECD Includes one 2-position base plate with M type connectors, one Oxygen/Moisture/Hydrocarbon filter for Carrier gas, one Oxygen/Moisture filter for Nitrogen
227-37003-02	Shimadzu Gas Filter Kit for compressed air Includes one 3-position base plate with M type connectors, one Oxygen/Moisture/Hydrocarbon filter for Carrier gas, one Hydrocarbon/Moisture filter for H ₂ , one Hydrocarbon filter for Compressed air
227-37001-01	Shimadzu Makeup Gas Filter Kit for separate makeup gas Includes one 1-position base plate with M type connectors, one Hydrocarbon/Moisture filter
227-37001-03	Shimadzu Carrier Gas Filter Kit (Helium spec) Includes one 1-position base plate with M type connectors, one Oxygen/Moisture/Hydrocarbon Helium purged filter

Replacement Filter Cartridges

P/N	Description
227-37011-01	Shimadzu Carrier Gas Filter (Oxygen/Moisture/Hydrocarbon)
227-37011-02	Shimadzu Combi Gas Filter (Hydrocarbon/Moisture)
227-37011-04	Shimadzu Combi Gas Filter for Nitrogen (Oxygen/Moisture)
227-37011-03	Shimadzu Single Gas Filter for Air (Hydrocarbon)
227-37011-05	Shimadzu Helium-specific Carrier Gas Filter (Oxygen/Moisture/Hydrocarbon)

Spare Parts and Accessories

P/N	Description
227-37021-01	Base plate 1-position with M type connectors
227-37022-01	Base plate 2-position with M type connectors
227-37023-01	Base plate 3-position with M type connectors
227-37031-01	Universal Ring Nut (1 pc)
227-37031-02	Base Plate O-ring Replacement Set (10 pcs inlet, 10 pcs outlet)
227-37031-04	Flush Cap Replacement Set (2 pcs)
227-37032-01	Shimadzu M Type Connector Set (1 pc inlet, 1 pc outlet)
227-37033-01	Electronic Indicator
670-11514	Fluid for Leak Check (240 mL)
201-36688	Moisture Trap for Compressed Air

Shimadzu Gas Supply Pipes

P/N	Description
221-81250-01	Gas Supply Pipe ASSY for 3-position filter kit Includes three gas supply pipes for Shimadzu GC side, one left-thread Hydrogen gas supply pipe for cylinder side.
201-48067-05	Carrier Gas Supply Pipe (5 m)
221-18990-50	Hydrogen Gas Supply Pipe (5 m, right thread)
201-48070	Air Supply Pipe (1 pc of 2 m, 1 pc of 1 m)



For Research Use Only. Not for use in diagnostic procedure.

This publication may contain references to products that are not available in your country. Please contact us to check the availability of these products in your country.

Company names, product/service names and logos used in this publication are trademarks and trade names of Shimadzu Corporation or its affiliates, whether or not they are used with trademark symbol "TM" or "®". Third-party trademarks and trade names may be used in this publication to refer to either the entities or their products/services. Shimadzu disclaims any proprietary interest in trademarks and trade names other than its own.

The contents of this publication are provided to you "as is" without warranty of any kind, and are subject to change without notice. Shimadzu does not assume any responsibility or liability for any damage, whether direct or indirect, relating to the use of this publication.

Shimadzu Corporation

www.shimadzu.com/an/